

JEFFERSON TOWNSHIP

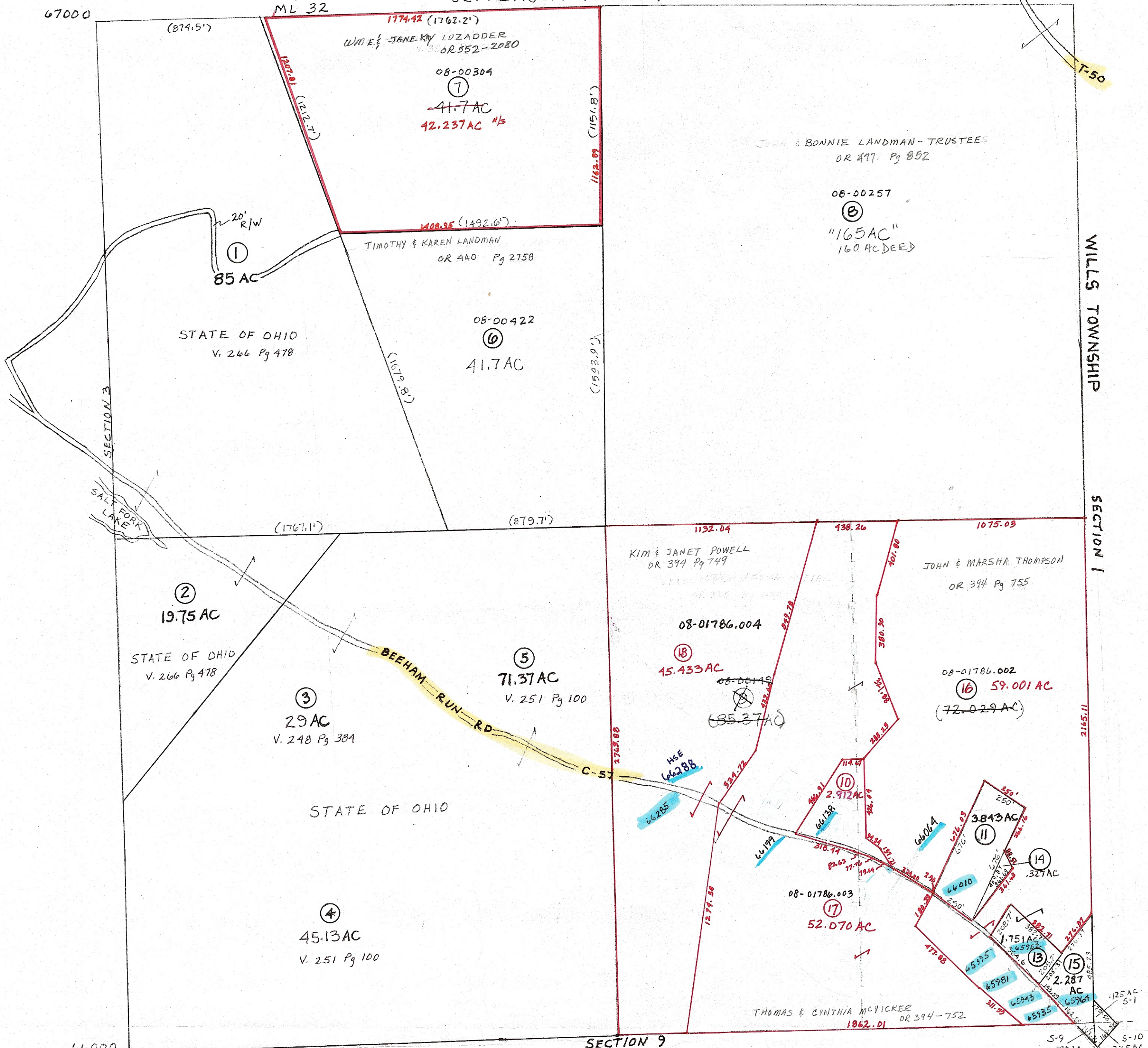
ML 17

67000

ML 32

WILLS TOWNSHIP

SECTION 1



- ⑩ 08-01786 OR 374 Pg 746 CHARLES & LAURA FITZGERALD
- ⑪ 08-01787 V. 324 Pg 654 JOHN & MARSHA THOMPSON
- ⑬ 08-00153 OR 556-117 MICHELLE & CORY McQUAIN
- ⑭ 08-01786.001 OR 435 Pg 3381 JOHN & MARSHA KAY THOMPSON
- ⑮ 08-00152 OR 556-3426 ERIC & BETH GORE

**PRELIMINARY**  
MAPS IN THIS OFFICE ARE  
FOR TAX PURPOSES  
ONLY-VERIFY INFO. BY DEED RECORDS

①

<b>DELMAR E. GEORGE</b> County Engineer  <b>TONY BROWN</b> County Auditor	<b>HOWARD R KING</b> Cartographer  JRS '82 Drawn	MEE 4-'90 MER 4-'01	Revised	Aerial Photo 2-G-129, 104 2-G-131, 102 NEW # 71	TAX MAP CENTER TOWNSHIP GUERNSEY COUNTY OHIO	Range 2	Twp 2	S2
		scale 1" = 400'			5-9 .178 AC. 5-10 .235 AC.	125 AC 5-1	15000	