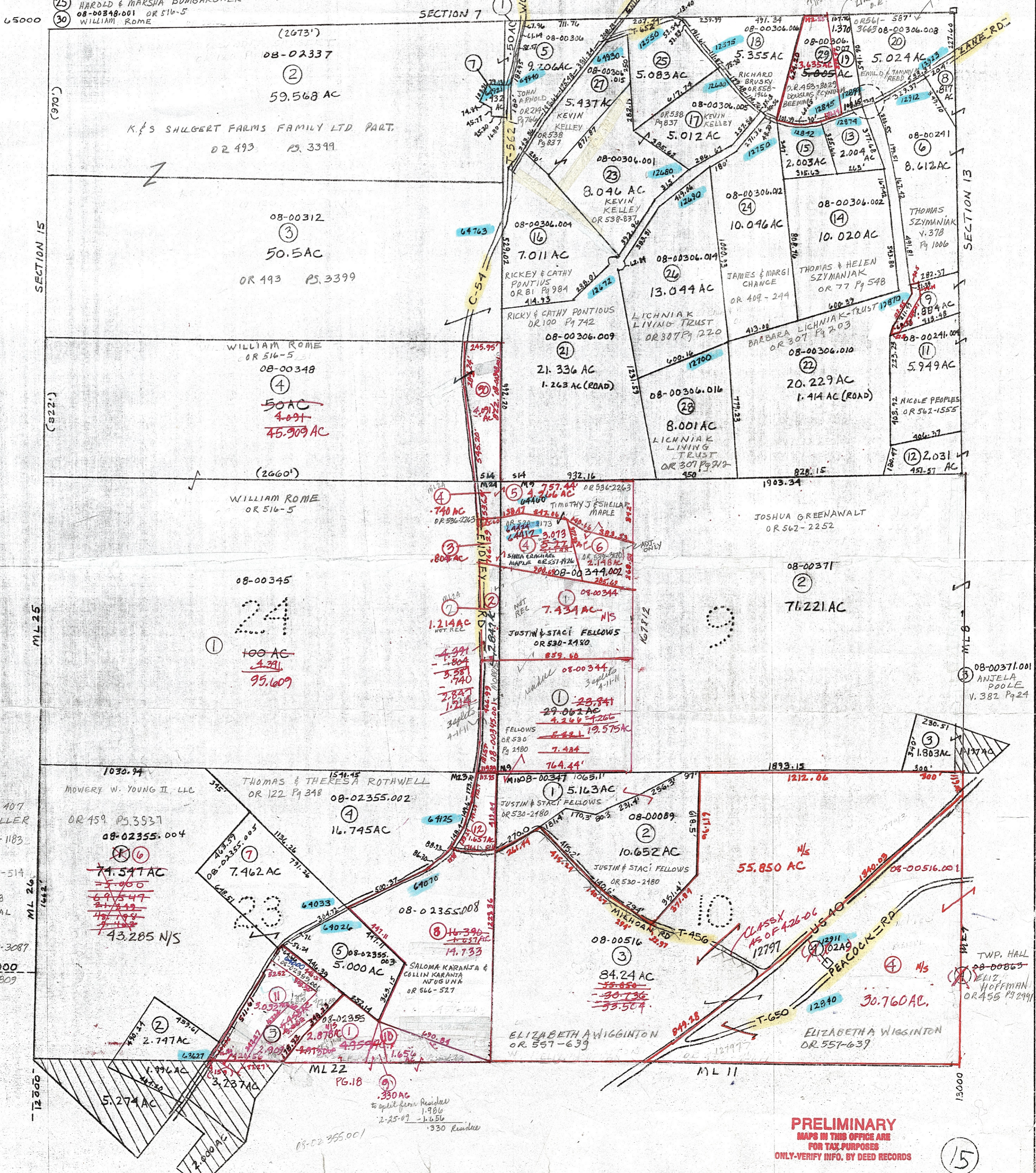


- 1/2 SEC 14
- 08-02338 OR 322 Pg. 837/839
 - ⑦ SANDRA SHUGERT
 - ⑧ 08-00241.001 OR 556-4875 BRITTA LUCAS
 - ⑨ 08-00241.002 OR 481-3815 HOWARD & CAROL FRY
 - ⑫ 08-00241.005 OR 416 Pg 2812 CLARA NEISWANGER ETAL
 - ⑬ 08-00306.001 OR 516-60 DOUGLAS SZYMANIAK
 - ⑮ 08-00306.003 OR 559-2385 THOMAS CASTERLINE
 - ⑲ 08-00306.013 OR 240 Pg 590 HAROLD & MARSHA BUMGARDNER
 - ⑳ 08-00348.001 OR 516-5 WILLIAM ROME

- ML23
- ⑨ 08-02355.DID 01242-2274 DENNIS HARDESTY
 - ⑩ 08-02355.009 01242-2276 STEVE & BARBARA FURBEE



- ML 23
- ② 08-02356 OR 182 Pg 407 PAULETTE WINLAND MILLER
 - ③ 08-02355.001 OR 455-1183 ROBERT & RUTH CORNELIUS
 - ⑤ 08-02355.003 OR 504-514 THOMAS ROTHWELL II
 - ① 08-02355 OR 535-408 CHRISTOPHER RAGER ETAL
 - ⑪ 08-02355.006 OR 530-3087 CLEARWATER THREE LLC
 - ⑫ 08-02355.011 OR 562-3809 JUSTIN & STACI FELLOWS

PRELIMINARY
 MAPS IN THIS OFFICE ARE
 FOR TAX PURPOSES
 ONLY-VERIFY INFO. BY DEED RECORDS

DELMAR E. GEORGE County Engineer TONY BROWN County Auditor	HOWARD R KING cartographer JRS '02 Drawn	MER 8-'01 Revised	Aerial Photo 2-G-131,133 2-G-158,160	scale 1"=400'	TAX MAP CENTER TOWNSHIP GUERNSEY COUNTY OHIO	Range 2 Twp 2	1/2 S 14 ML's 24 9 23 10
---	--	-------------------	--	---------------	---	------------------	--------------------------------