

62 08-10700.002 O.R. 519-3244
LARUE HOLDINGS LLC

39 08-00224.020 O.R. 474-1086
LARUE HOLDINGS LLC
40 08-00224.021 O.R. 474-1086
LARUE HOLDINGS LLC
41 08-00224.022 O.R. 474-1086
LARUE HOLDINGS LLC
42 08-00224.023 O.R. 474-1086
LARUE HOLDINGS LLC
43 08-00224.024 O.R. 474-1086
LARUE HOLDINGS LLC
44 08-00224.025 O.R. 474-1086
LARUE HOLDINGS LLC

33 08-00224.014 O.R. 473-3323
LARUE HOLDINGS LLC
34 08-00224.015 O.R. 473-3323
LARUE HOLDINGS LLC
35 08-00224.016 O.R. 473-3323
LARUE HOLDINGS LLC
36 08-00224.017 O.R. 473-3323
LARUE HOLDINGS LLC
37 08-00224.018 O.R. 473-3323
LARUE HOLDINGS LLC
38 08-00224.019 O.R. 473-3323
LARUE HOLDINGS LLC

6 08-00224 O.R. 473-3323
LARUE HOLDINGS LLC

SEC 18

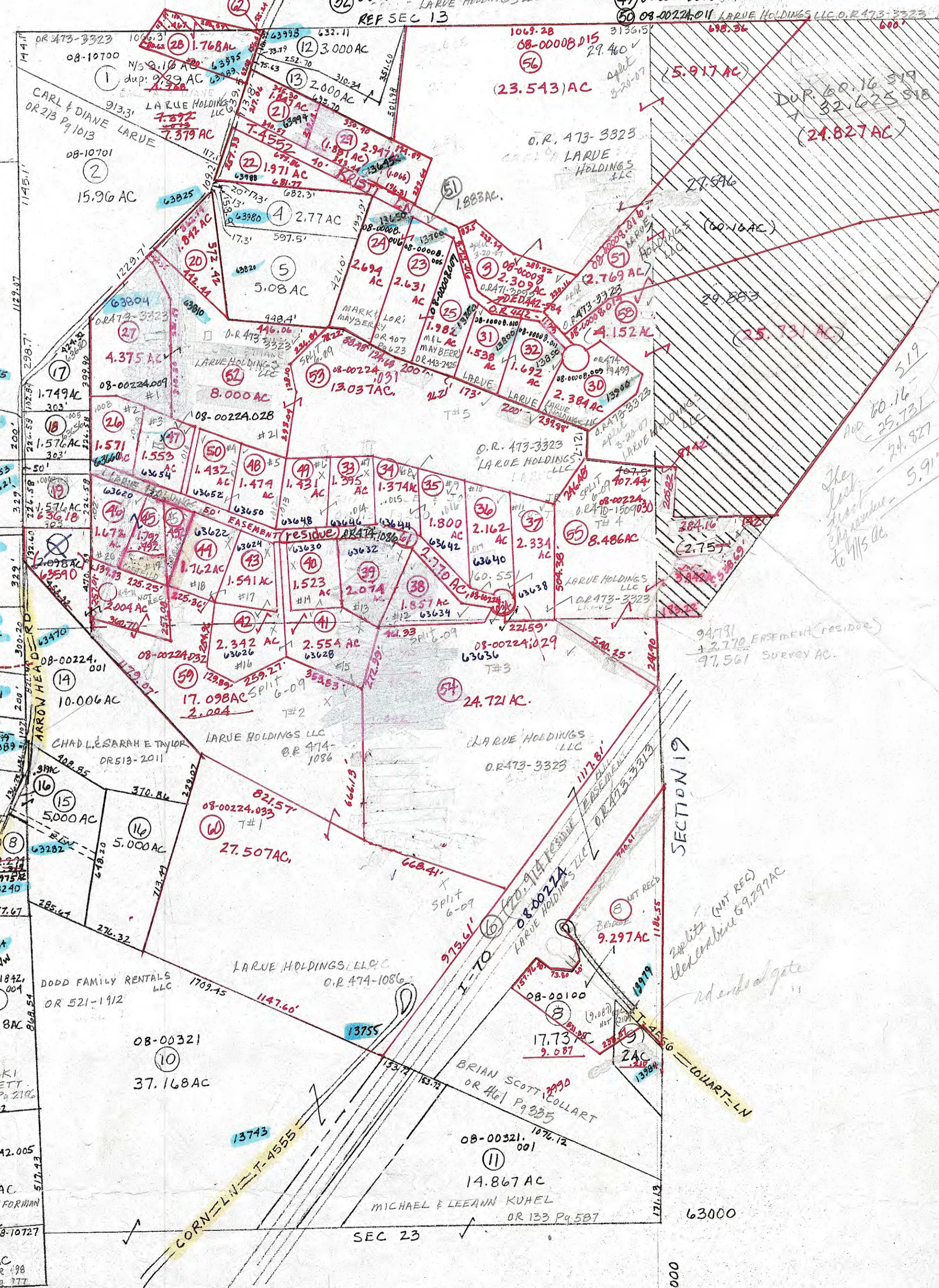
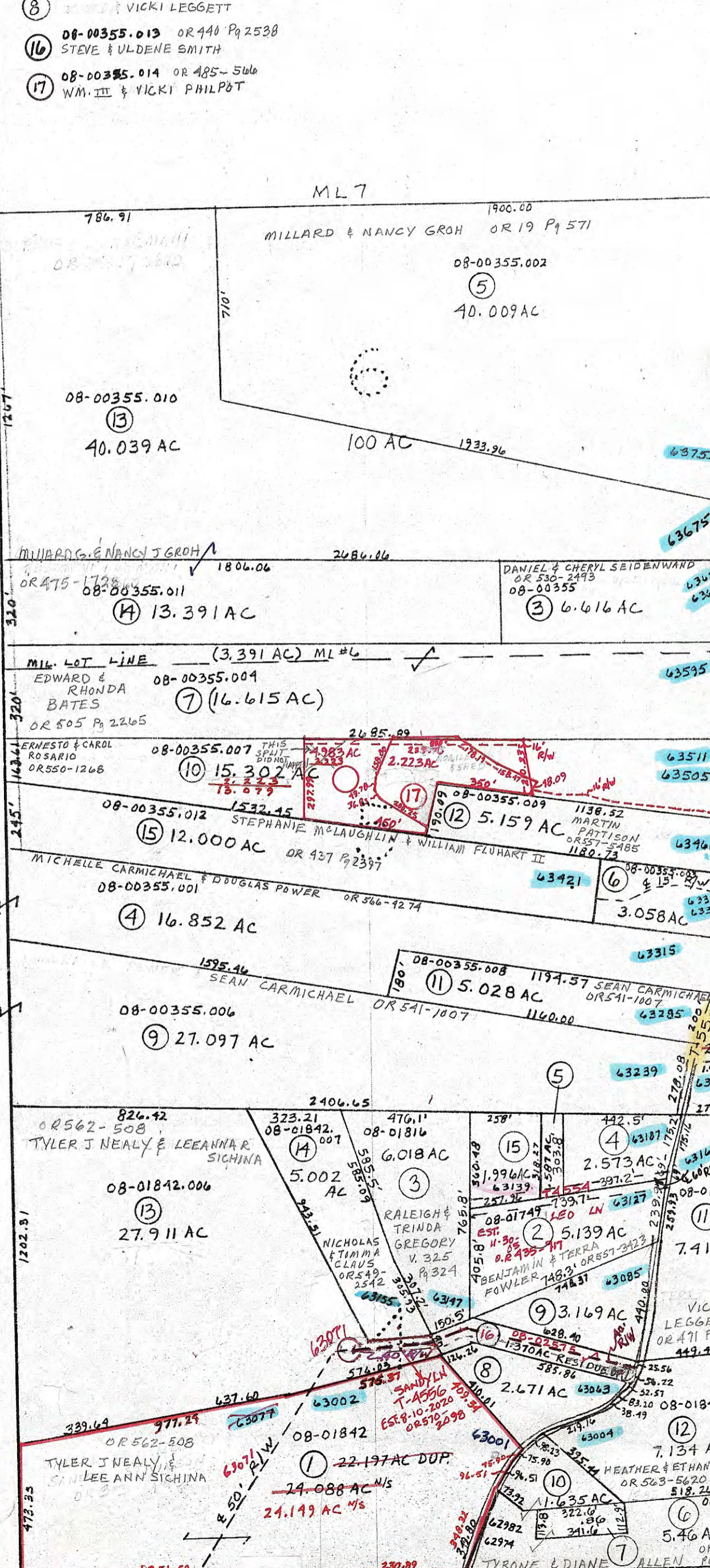
4 08-02012 O.R. 490-627
TIMOTHY & JEAN ROE-TRUSTEES
5 08-02013 O.R. 490-627
TIMOTHY & JEAN ROE-TRUSTEES
9 08-00099 O.R. 461 Pq 335
BRIAN S. COLLART
12 08-00008.001 O.R. 202 Pq 217
RICHARD & MARIE WILSON
13 08-00008.002 O.R. 202 Pq 217
RICHARD & MARIE WILSON
15 08-00224.003 O.R. 221 Pq 462
STEVE & ULDENE SMITH
16 08-00224.002 O.R. 221 Pq 462
STEVE & ULDENE SMITH
17 08-00224.004 O.R. 510-3484
AMANDA MCG LUMPHY
18 08-00224.005 O.R. 331-165
MICHAEL K. & VIRGINIA A.
MCG LUMPHY
19 08-00224.006 O.R. 525-3344
JUSTIN DINGUS
20 08-00224.007 O.R. 490-627
TIMOTHY & JEAN ROE-TRUSTEES
21 08-00008.003 O.R. 484-436
KYLE CARPENTER
22 08-00008.004 O.R. 490-627
TIMOTHY & JEAN ROE-TRUSTEES
31 08-00008.010 O.R. 473-3323
LARUE HOLDINGS LLC
32 08-00008.011 O.R. 473-3323
LARUE HOLDINGS LLC
REF SEC 13

26 08-00224.008 O.R. 570-1357
MCG LUMPHY HOLDINGS LLC
27 08-00224.009 O.R. 473 Pq 335
LARUE HOLDINGS LLC
28 08-10700.001 O.R. 498-3060
DAVID & KIMBERLY WAGNER
29 08-00008.008 O.R. 473-3323
DARREN R. & PATRICIA A BURROW
45 08-00224.026 O.R. 462-621
JASON & APRIL CASTELLO
46 08-00224.027 O.R. 462-621
JASON & APRIL CASTELLO
47 08-00224.010 O.R. 473-3323
LARUE HOLDINGS LLC
48 08-00224.012 O.R. 473-3323
LARUE HOLDINGS LLC
49 08-00224.013 O.R. 474-1086
LARUE HOLDINGS LLC
50 08-00224.011 O.R. 473-3323
LARUE HOLDINGS LLC

MLS

6 08-00355.003 O.R. 477 Pq 2032
TAD HOME INVESTMENTS-LLC
8 08-00355.005 O.R. 477 Pq 2106
VICKI LEGGETT
16 08-00355.013 O.R. 440 Pq 2538
STEVE & ULDENE SMITH
17 08-00355.014 O.R. 485-566
WM. III & VICKI PHILPAT

ML 7



PRELIMINARY
MAPS IN THIS OFFICE ARE
FOR TAX PURPOSES
ONLY-VERIFY INFO. BY DEED RECORDS

19

DELIMAR E. GEORGE
County Engineer

TONY BROWN
County Auditor

HOWARD R KING
Cartographer

MER 8-'01 Revised

Aerial Photo
2-5-133

TAX MAP
CENTER TOWNSHIP
GUERNSEY COUNTY OHIO

Scale 1" = 400'

Range Twp 2 2 1/2 S 18
ML 5 4, 5, 6