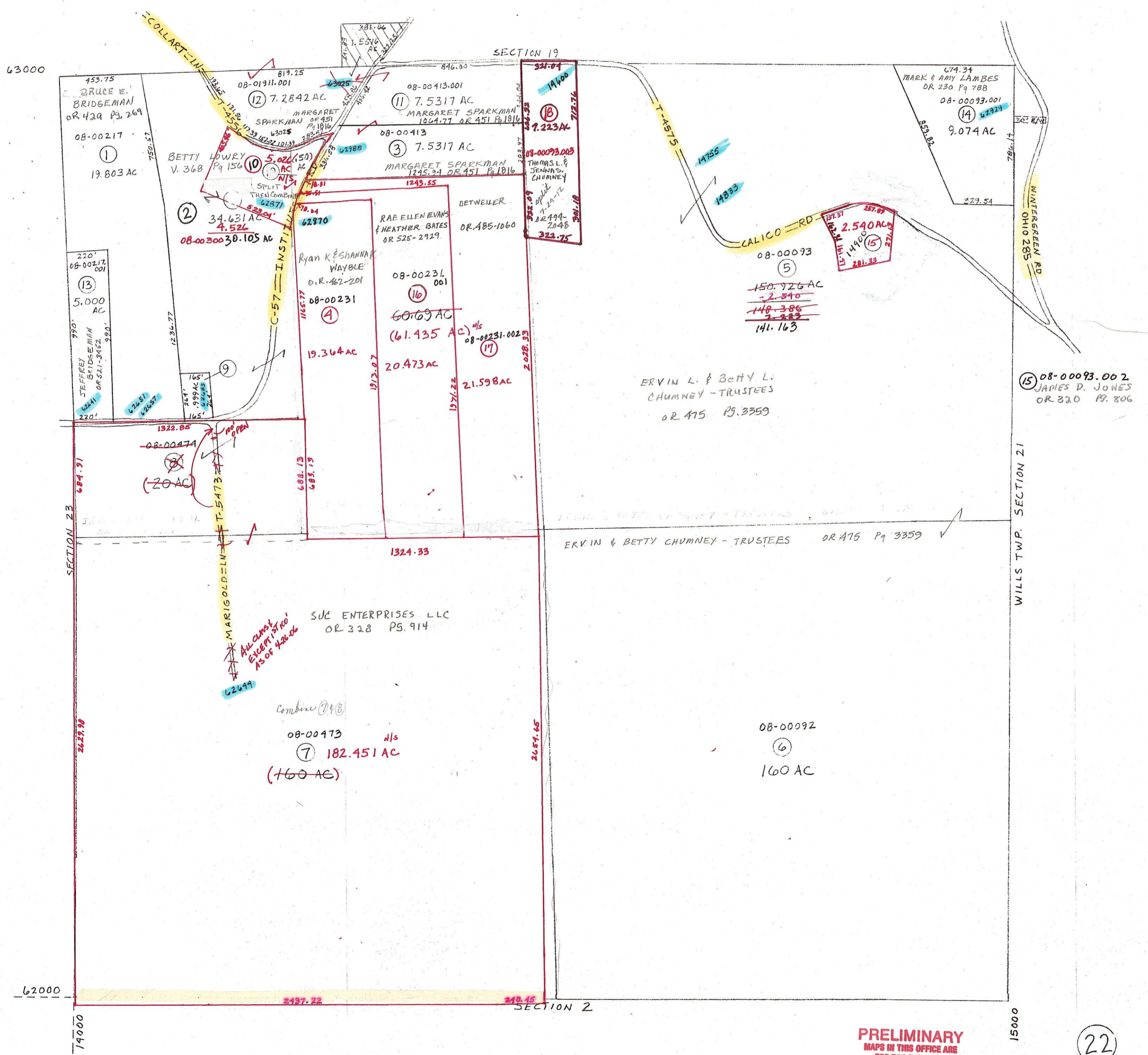


- 9 08-00001 OR 22 Pg 26
KEVIN & LORI LOWRY
- 10 08-02367 OR-333 Pg 628
BETTY SUTTON
- 15 08-00093-002 OR 493 Pg 2998
JAMES D. JONES



PRELIMINARY
MAPS IN THIS OFFICE ARE
FOR TAX PURPOSES
ONLY-VERIFY INFO. BY DEED RECORDS

22

DELMAR E. GEORGE County Engineer TONY BROWN County Auditor	HOWARD R KING cartographer JBS '82 Drawn	MER 9-'01	Revised	Aerial Photo 2-G-133 2-G-98,100 stretched scale 1" = 400'	TAX MAP CENTER TOWNSHIP GUERNSEY COUNTY OHIO			Range	Twp	
						2	2	522		