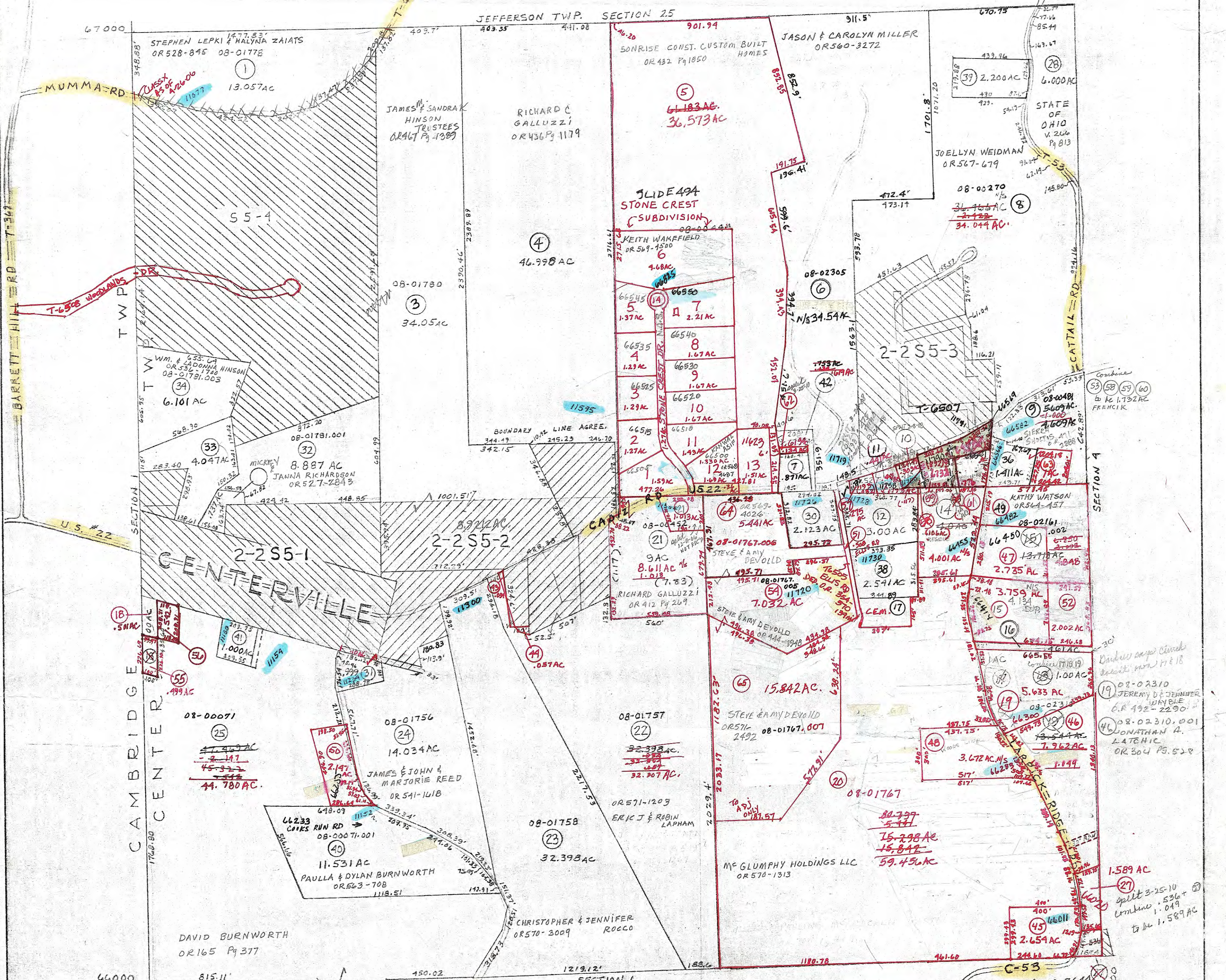


JEFFERSON TWP. SECTION 25



- 08-00375 OR 27-52 WILKER W.M. R. JR. & VALORIE J.
- 08-00519 OR 552-388 CHANCE STOFFEL
- 08-02078 OR 541-1919 PAUL CANAL
- 08-02079 OR 515-2885 DOUGLAS E GEORGE
- 08-00198 OR 566-504 CHANDLER K HARPER
- 08-02162 V. 343 P. 253 CARL & DONNA BRILL
- 08-00094 V. 224-491 CENTER METHODIST CHURCH
- 08-02311 OR 474 P. 568 JASON & CHARLENE LATCHIC
- 08-02002 V. 375 P. 109 SANDRA HINSON & BARBARA GEORGE
- 08-01767.001 OR 14 P. 750 LLEWELLYN & BRENDA HAYES
- 08-01754.001 OR 136 P. 293 JANET LAMSON
- 08-01781.002 OR 530-234 L. JEANNETTE COX TRUSTEE
- 08-00181.001 OR 494-94 ANITA FRENCH TRUSTEE
- 08-01767.002 OR 471-1368 DELMAR & BARBARA GEORGE TRUSTEES
- 08-00270.002 OR 108 P. 390 RANDY & SUZANNE LARRICK
- 08-00071.002 OR 176 P. 755 JOLINDA WAREHIME
- 08-00375.001 OR 560-3272 JASON & CAROLYN MILLER
- 08-01757.001 OR 444 P. 2098 JAMES MICHAEL GEORGE
- 08-01757.002 OR 444 P. 2098 JAMES MICHAEL GEORGE
- 08-01767.003 OR 519-2620 CHARLES & CARLA SMITH
- 08-02161.001 OR 540-846 TIMOTHY & RENAE LYONS
- 08-01767.004 OR 322 P. 996 M. LAURENCE MCKEY & CHARLENE
- 08-00071.003 OR 556-95 JAMES & JOLINDA MARKEL
- 08-02161.003 OR 423-201 CARL L. & DONNA M. BEALL
- 08-00270-004 OR 111 P. 1401 FRENCH PROPERTIES LLC
- 08-00094 OR 455-2067 DAVID & JUDITH BURNWORTH
- 08-00071.004 OR 455-2069 CENTER METHODIST CHURCH
- 08-02078.001 O.P. 514-1102 DELMAR & BARBARA GEORGE TRUSTEES
- 08-00519.001 OR 407-2474 FRENCH PROPERTIES LLC
- 08-00270.005 OR 560-3644 B & K STILLION LLC
- 08-00270-006 OR 405-7127 FRENCH PROPERTIES LLC
- 08-00270.007 OR 561-5851 CHASTIN LENT
- 08-00375.002 OR 470-2 WMR, JR & VALORIE GILCHER
- 08-00181.002 OR 481-816 GERRY FRENCH - TRUSTEE

PRELIMINARY MAPS IN THIS OFFICE ARE FOR TAX PURPOSES ONLY-VERIFY INFO, BY DEED RECORDS