

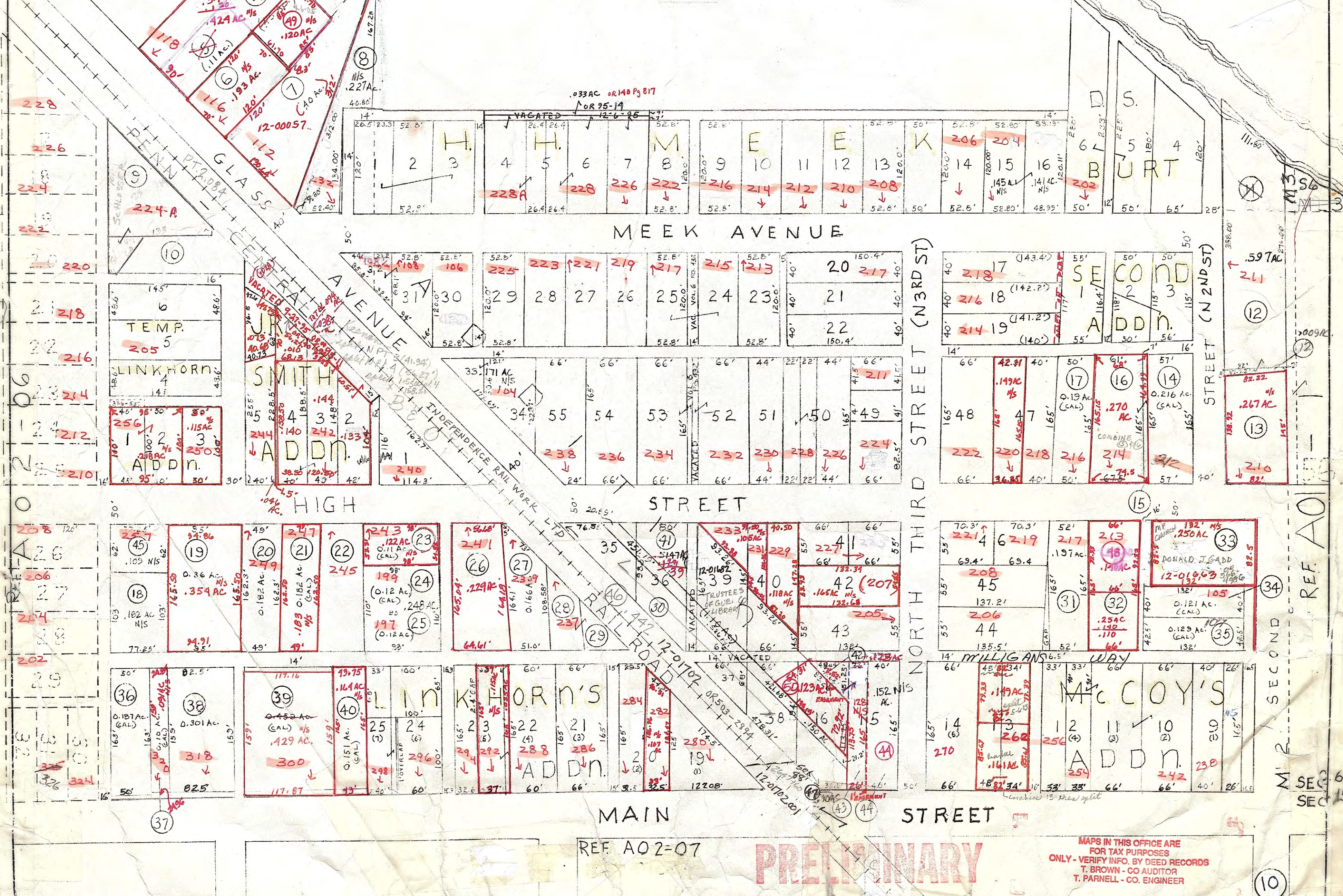
A22
6.58 AC

WILLS
BETHSHEN
C R E M E
BYESVILLE

3.50 AC.
See Map A02-02 Ref.

BYESVILLE CITY PARK

13.41 AC.
V149 P.396



REF A02-07

PRELIMINARY

MAPS IN THIS OFFICE ARE FOR TAX PURPOSES ONLY - VERIFY INFO. BY DEED RECORDS T. BROWN - CO. AUDITOR T. PARNELL - CO. ENGINEER

LLOYD A BROCKWELL
co. engineer
LEONARD PATTERSON
co. auditor

HOWARD R KING
cartographer
o/c
Drawn 5-12-81

Revised

Aerial Photo

TAX MAP
BYESVILLE
GUERNSEY COUNTY OHIO
scale 1"=100'

Range Twp
3 1 A02-05

M2 Village