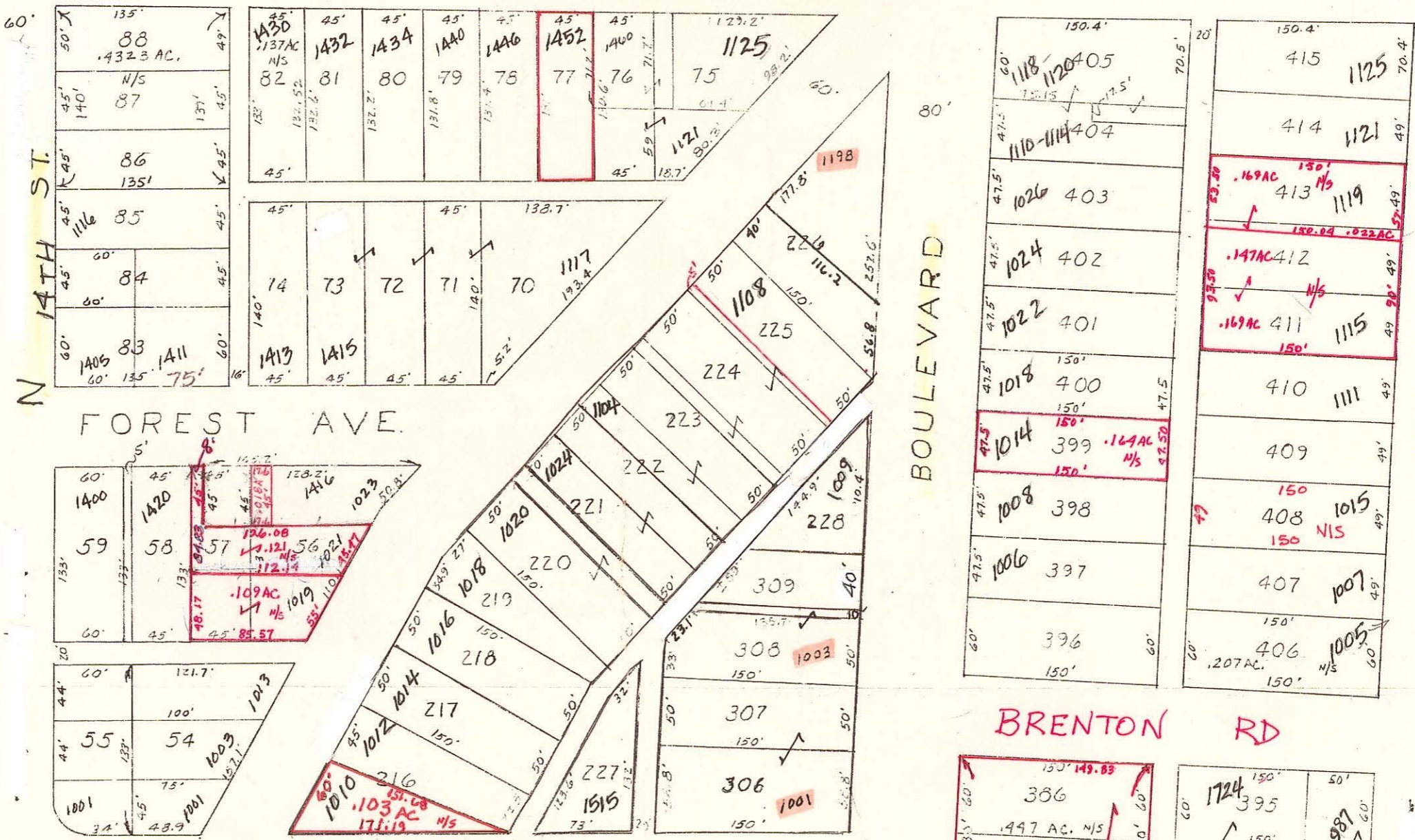


S 13-2

S 13-1

EDGEWORTH AVENUE

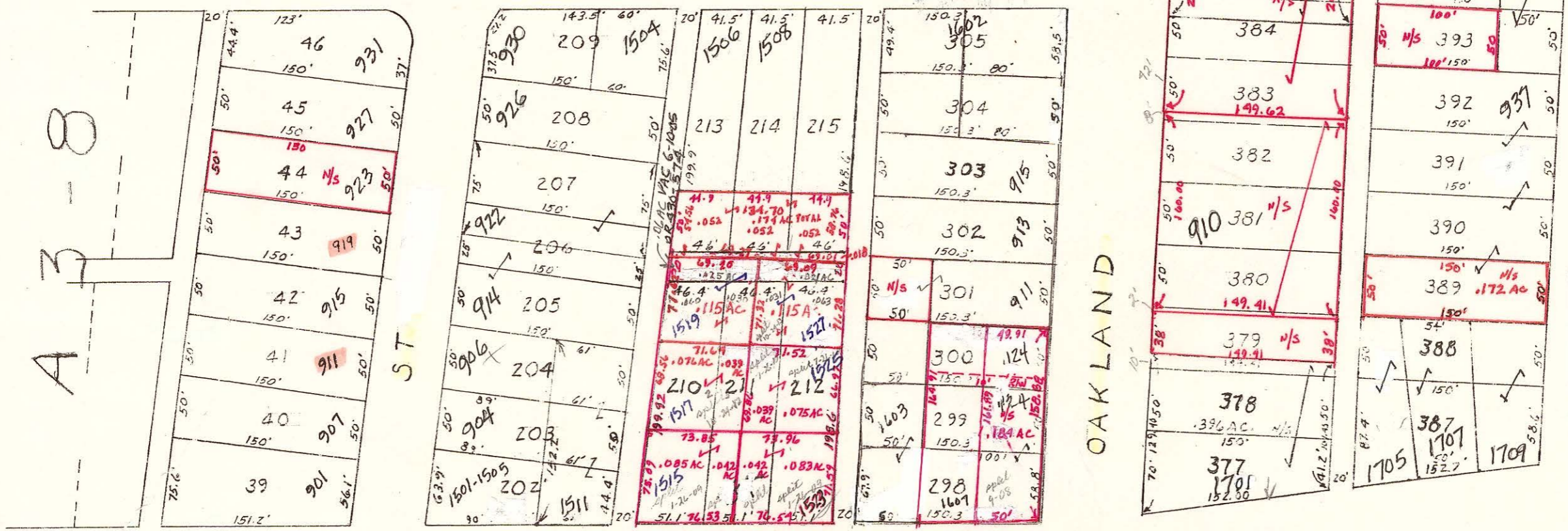


BOULEVARD

BRENTON RD

BRENTON RD

A 3-8

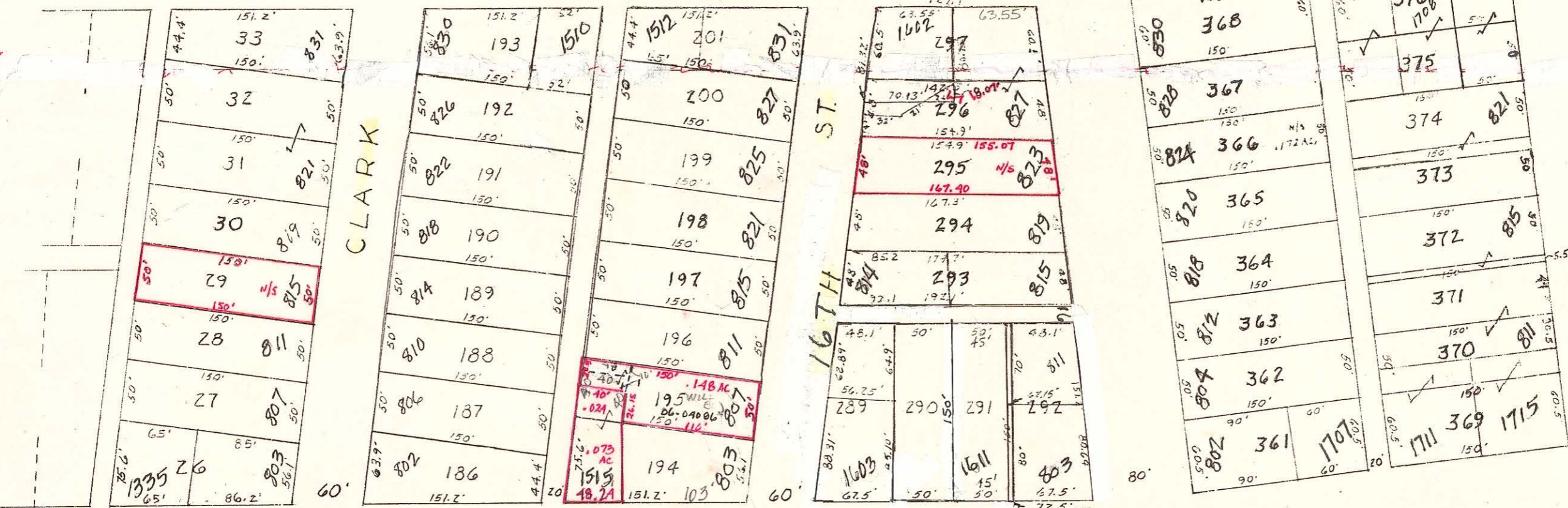


OAKLAND

18TH ST

A 3-2

CLAIRMONT AVENUE



SCOTT AVENUE

A 3-5

A 3-6

A 3-9

PRELIMINARY

MAPS IN THIS OFFICE ARE FOR TAX PURPOSES ONLY - VERIFY INFO WITH RECORDS T. BRO... T. PARNELL... Corp

LOYD A BROCKWELL
co engineer
LEONARD PATTERSON
co auditor

HOWARD R KING
cartographer
DENNIS KING
Drawn

Revised
M&A 1991
MER 1995

Aerial Photo

TAX MAP
CAMBRIDGE CORP
GUERNSEY COUNTY OHIO
scale 1"=100'
MAR-1978

Range Twp
3 2 A-3-4

28