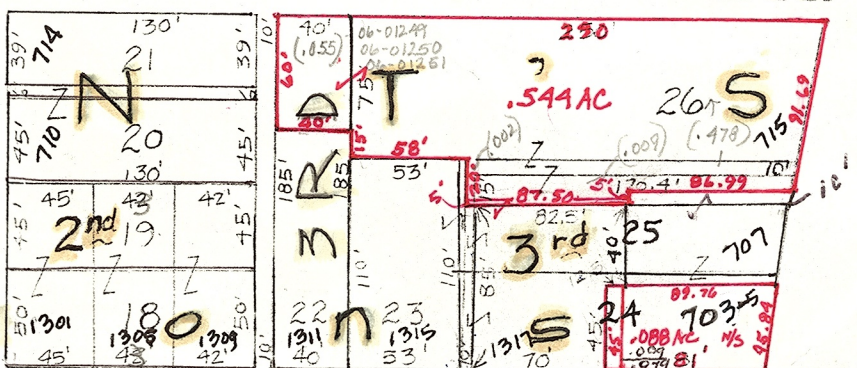
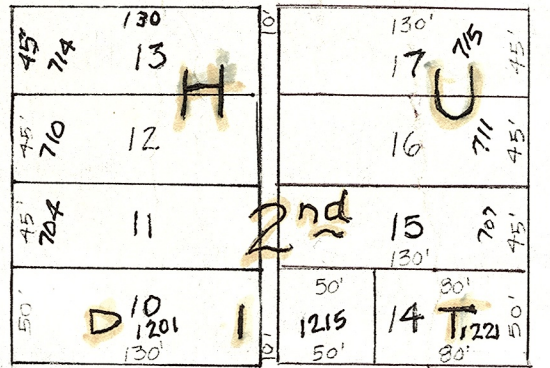
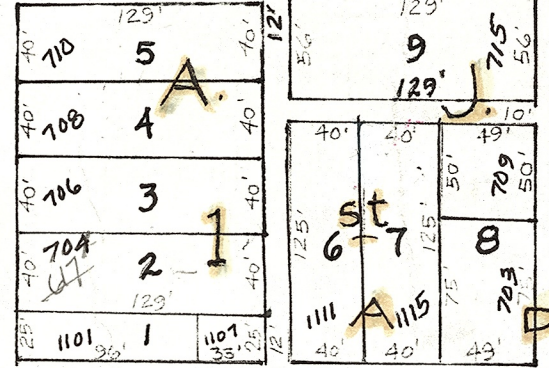
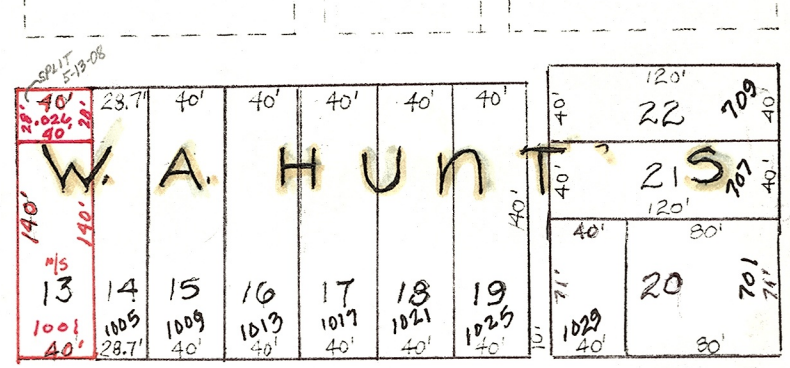
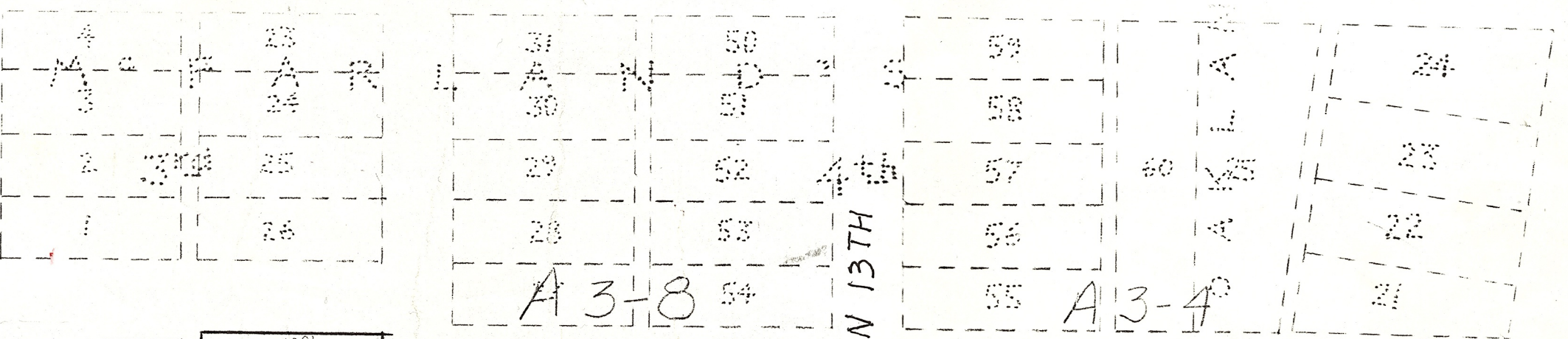


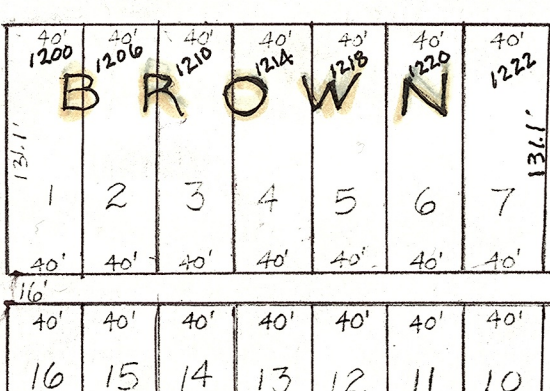
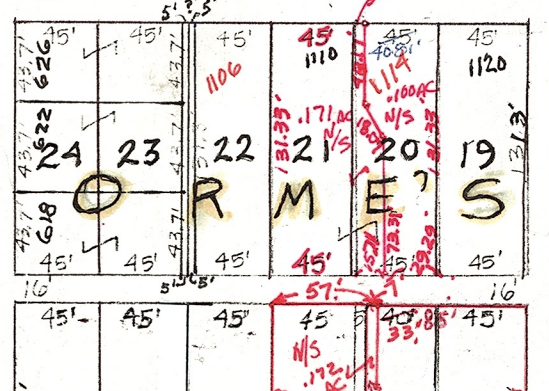
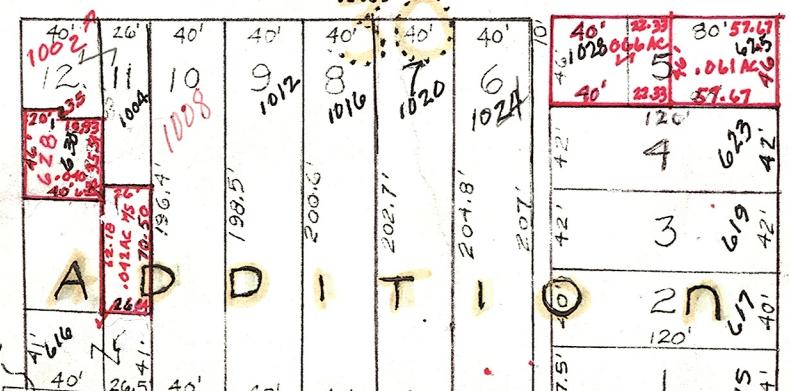
PINE FIELD

SCOTT AVENUE



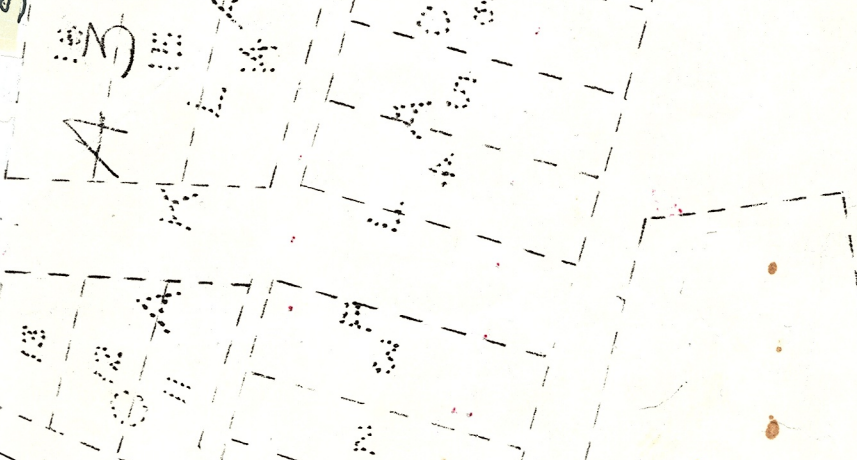
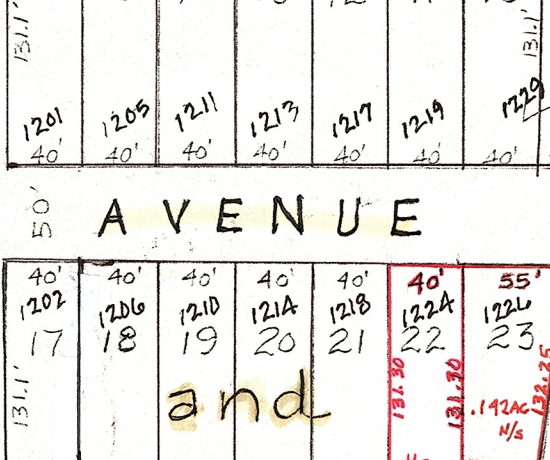
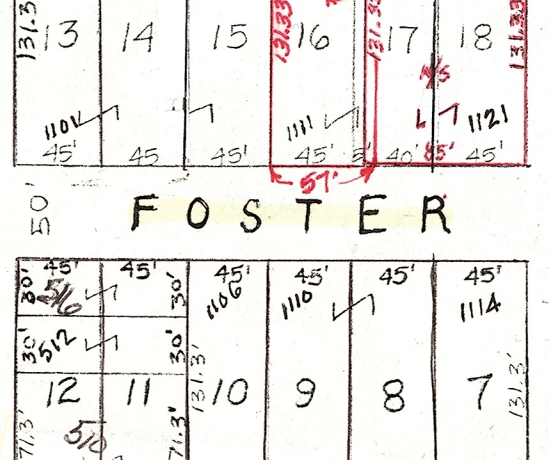
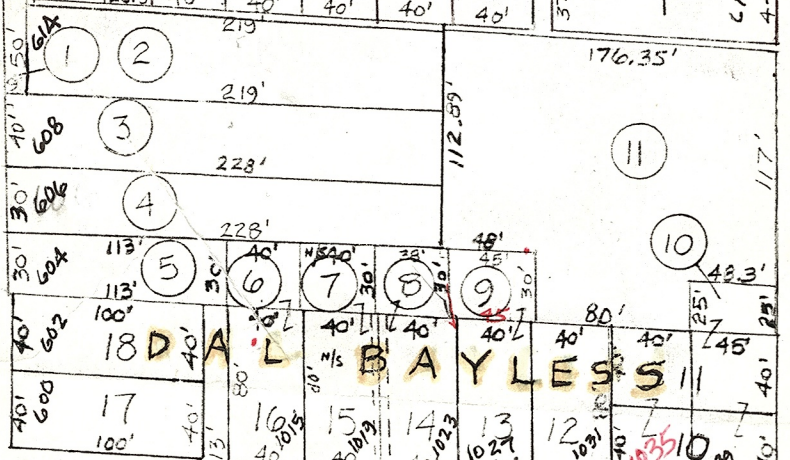
BLAINE AVENUE

BLAINE AVENUE



FOSTER AVENUE

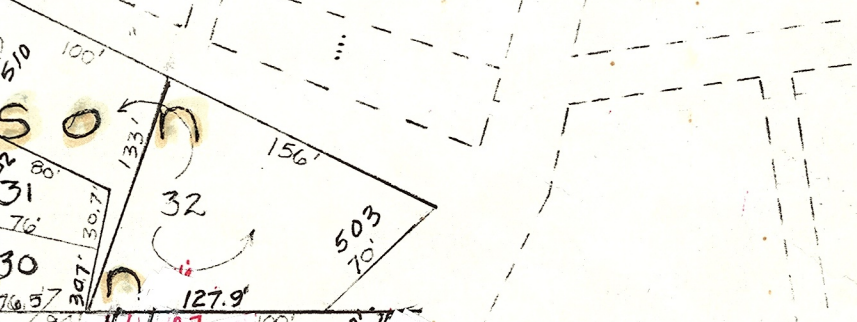
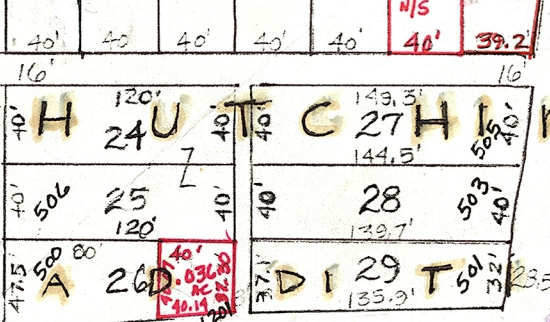
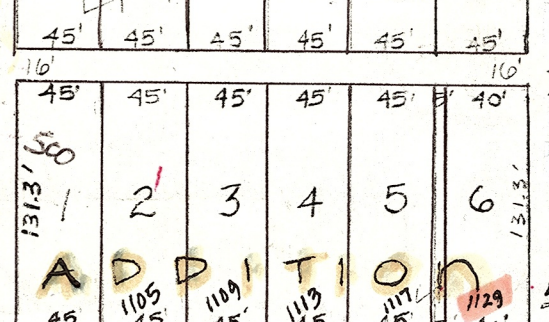
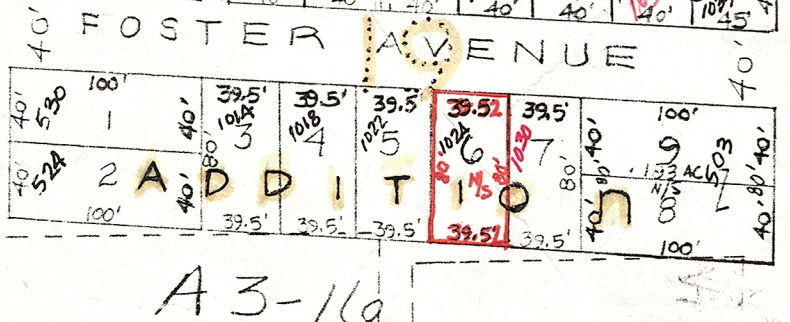
FOSTER AVENUE



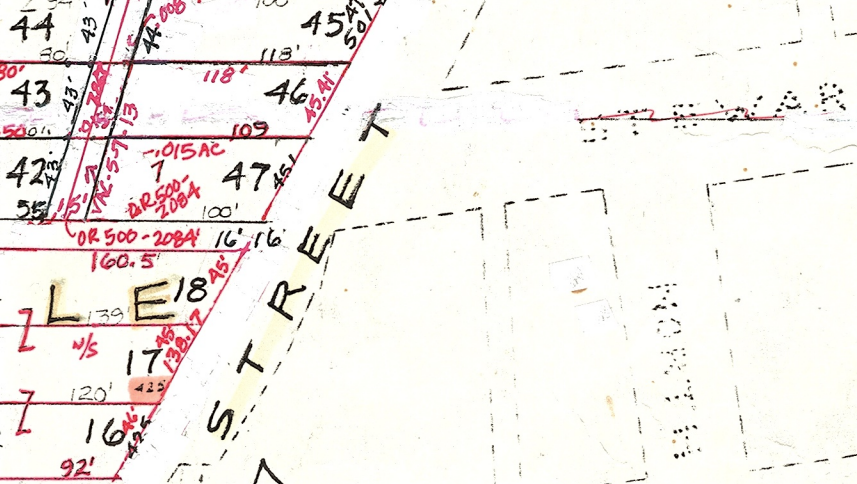
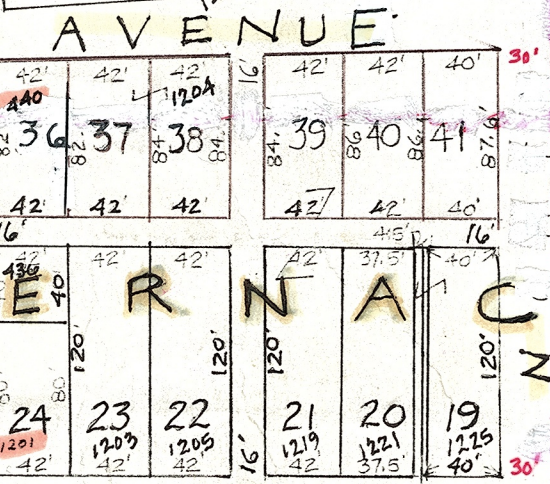
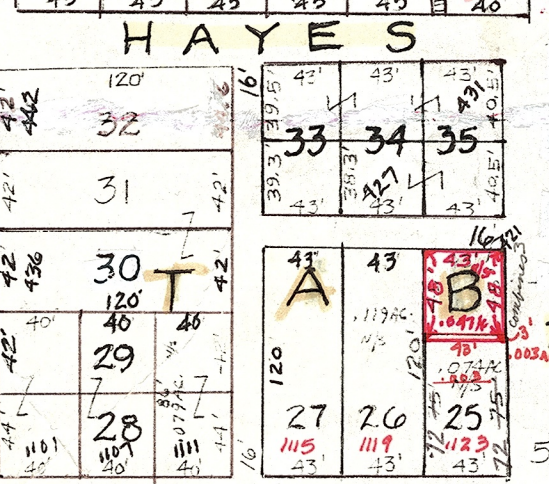
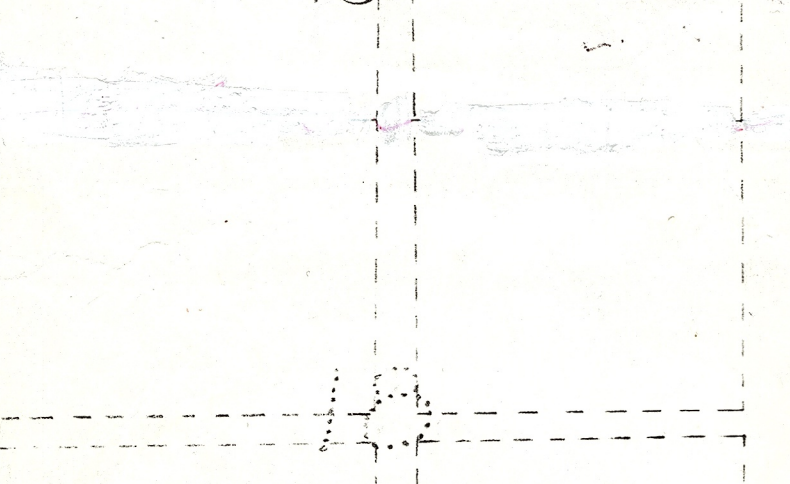
A3-16

HAYES AVENUE

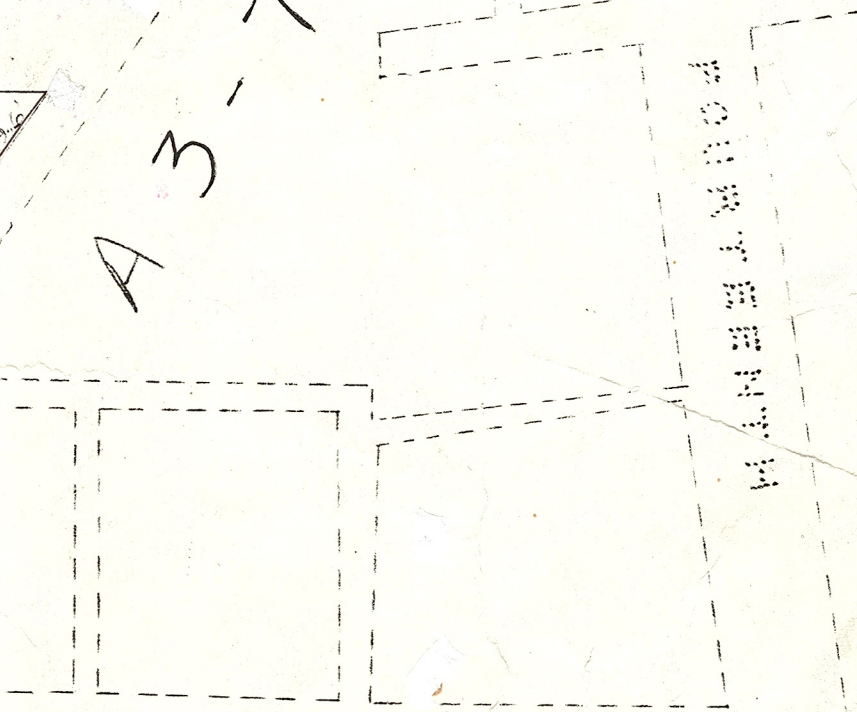
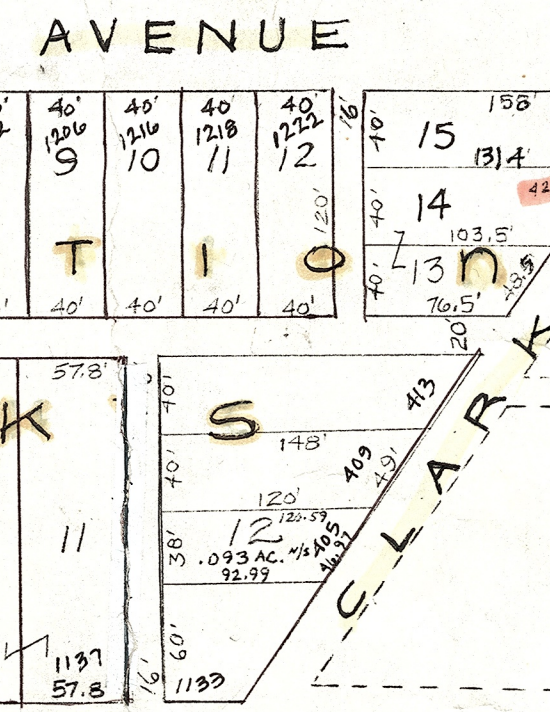
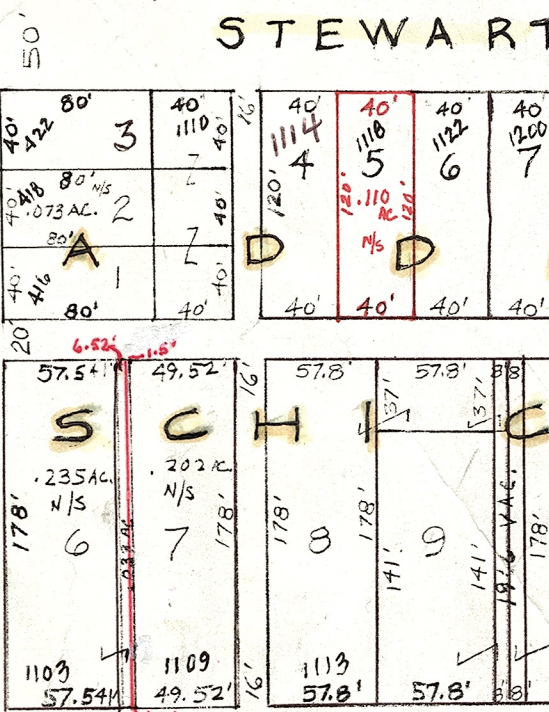
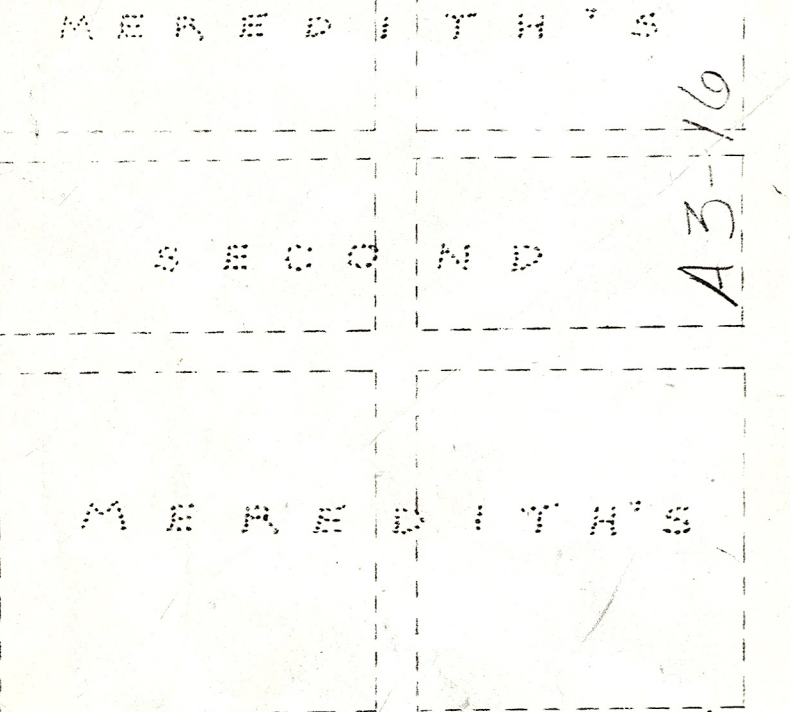
HAYES AVENUE



STEWART AVENUE



BEATTY AVENUE



PRELIMINARY

McKACKEN'S A3-16

MAPS IN THIS OFFICE ARE FOR TAX PURPOSES ONLY - VERIFY INFO BY DEED RECORDS T. BROWN CO. ENGINEER T. PARNELL CO. ENGINEER

LLOYD A BROCKWELL co engineer EDWARD PATTERSON co auditor

HOWARD R KING cartographer JRS '78 Drawn

Revised Aerial Photo MER 1991 MER 1985

TAX MAP CAMBRIDGE CORPORATION GUERNSEY COUNTY OHIO scale 1"=100'

Range Two 3 2 A3-9

33