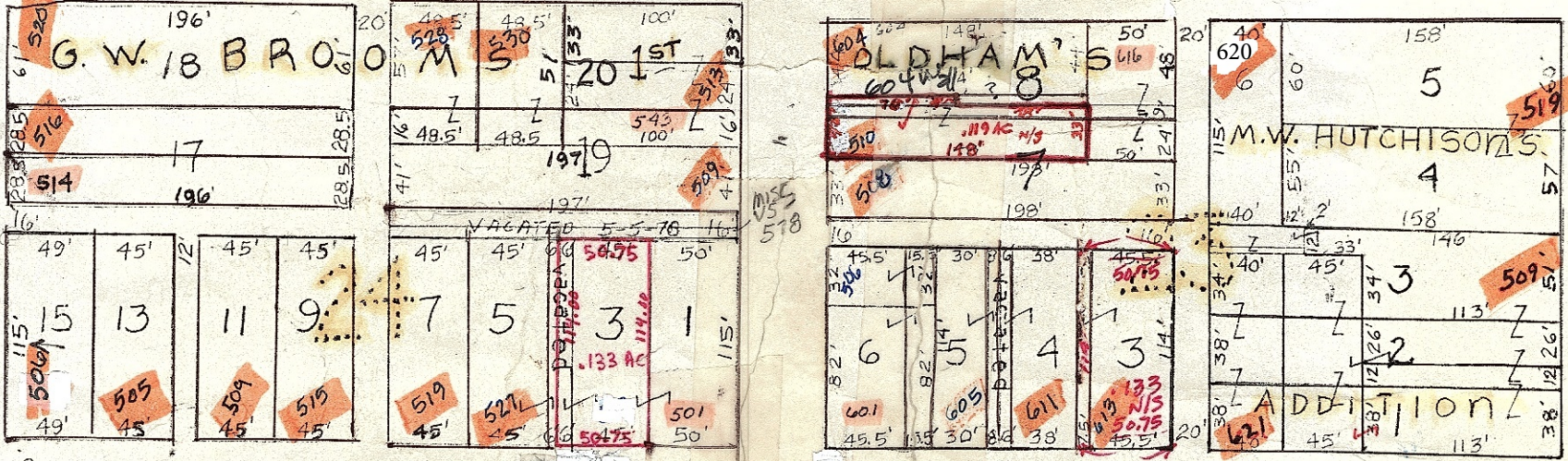


A3-13

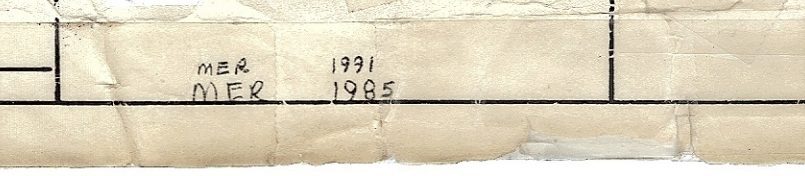
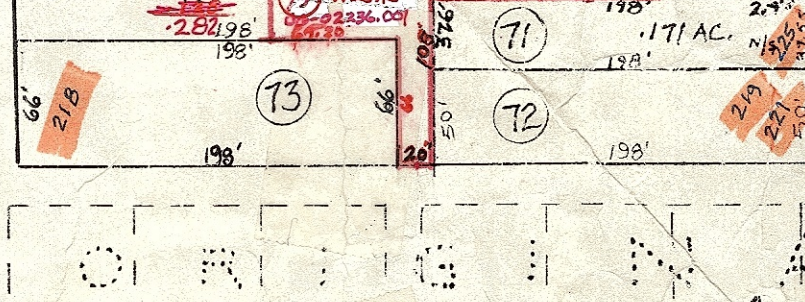
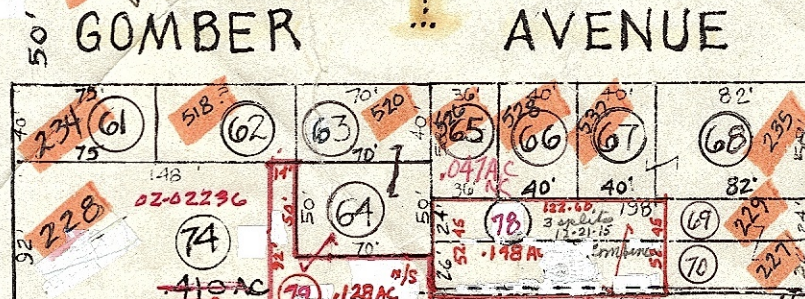
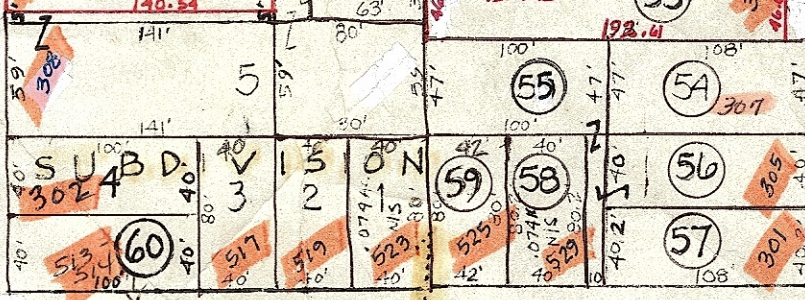
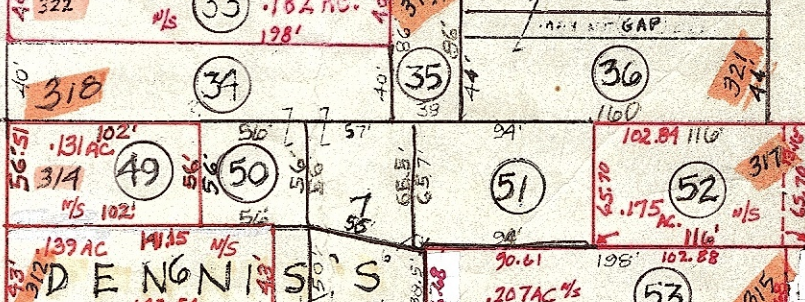
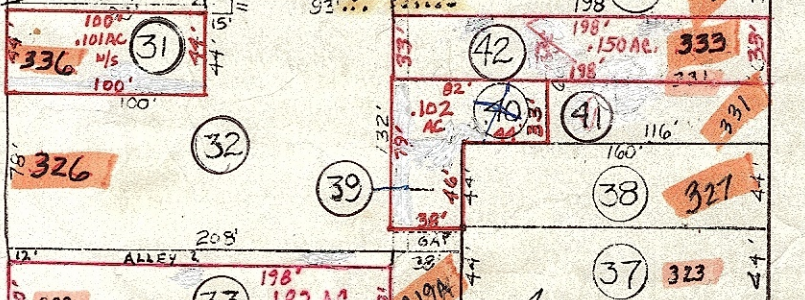
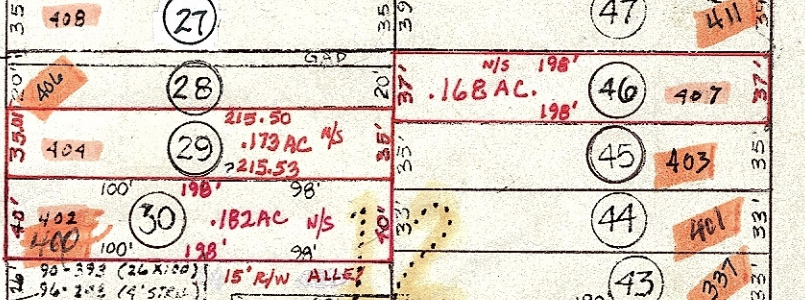
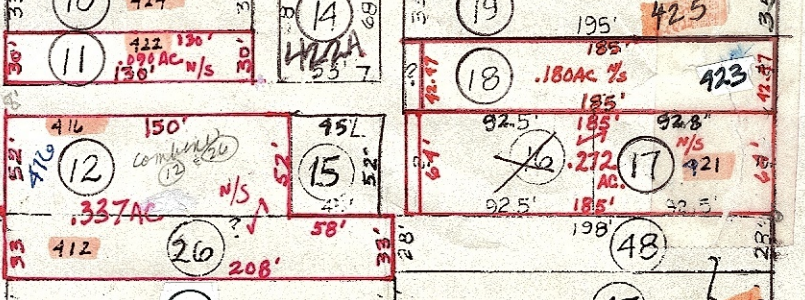
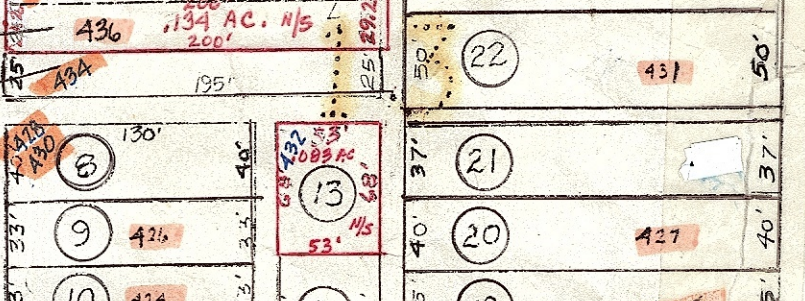
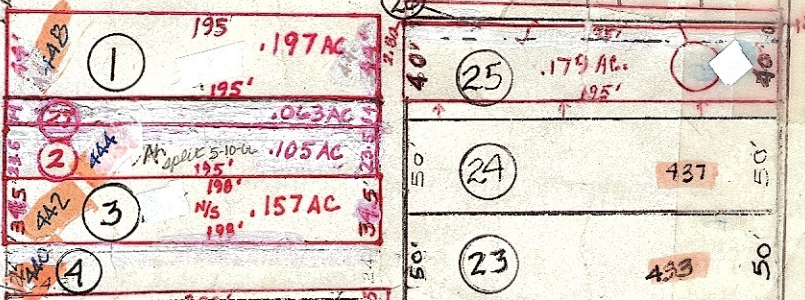
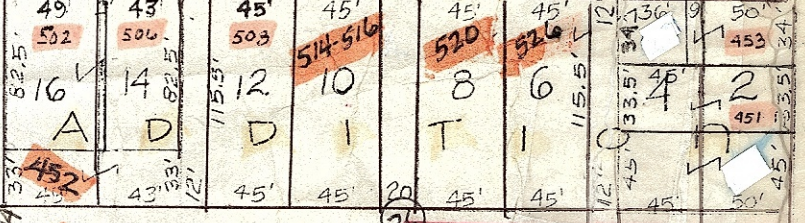
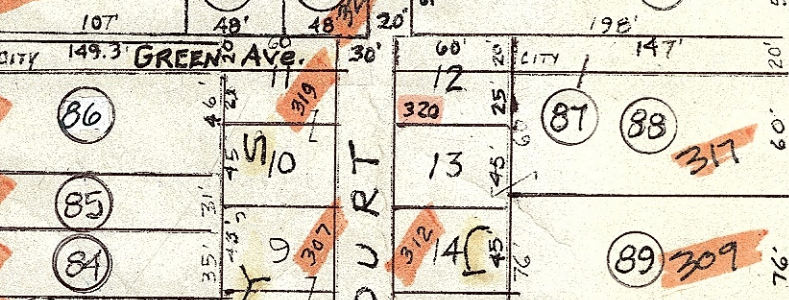
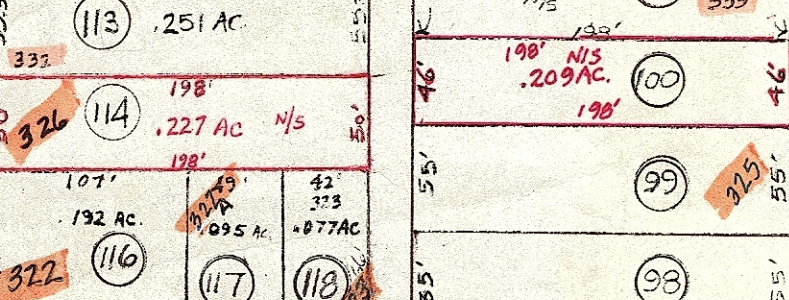
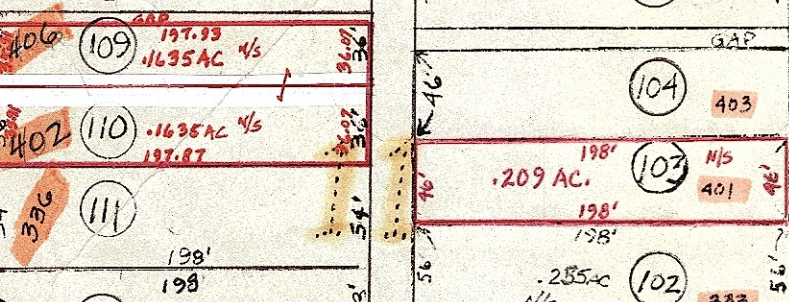
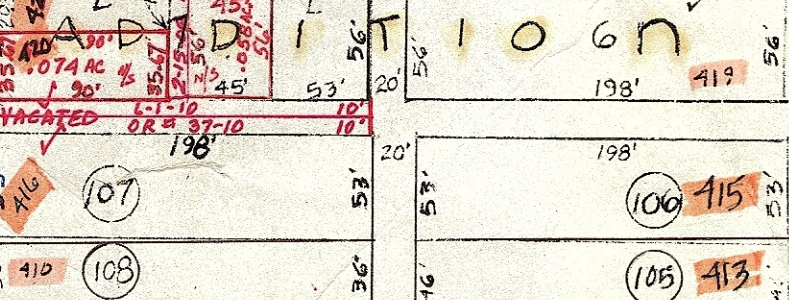
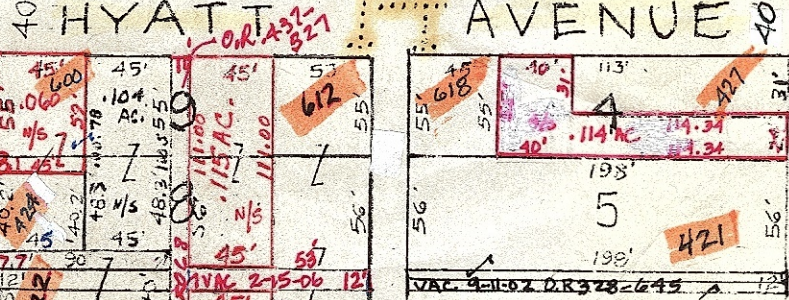
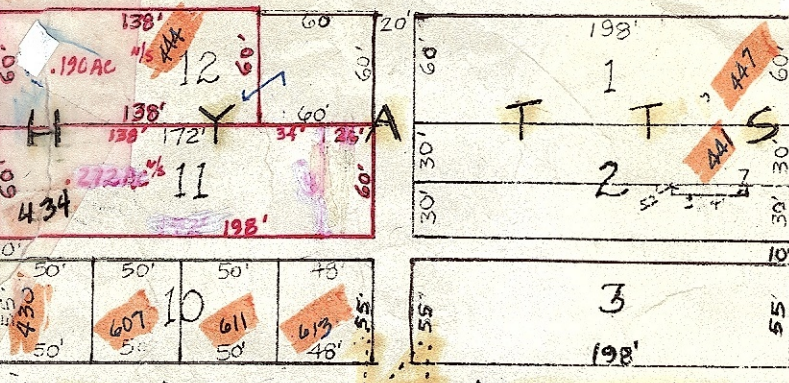
WALL AVENUE

WALL AVE



FOSTER AVENUE

7TH ST



A4-4

5TH ST

A4-10

A3-19

22

15

A3-15

4TH ST

STEWART AVE

WATTS

WATTS

WATTS

WATTS

WATTS

WATTS

C O G R O V E

B R O O M E

J O H N S T O N ' S

G O M B E R 38

G O M B E R 28

L O F L A N D ' S

G O M B E R

S E C O N D O R I G I N A L P L A T

LLOYD A BROCKWELL
co engineer

HOWARD KING
cartographer

Revised
Aerial Photo

TAX MAP
CAMBRIDGE CORPORATION
GUERNSEY COUNTY OHIO

3 2 A3-14

MAPS IN THIS OFFICE ARE
FOR TAX PURPOSES
VERIFY INFO. BY DEED RECORDS
T. BROWN - CO AUDITOR
I. PARNELL - CO ENGINEER

Corp
page 37