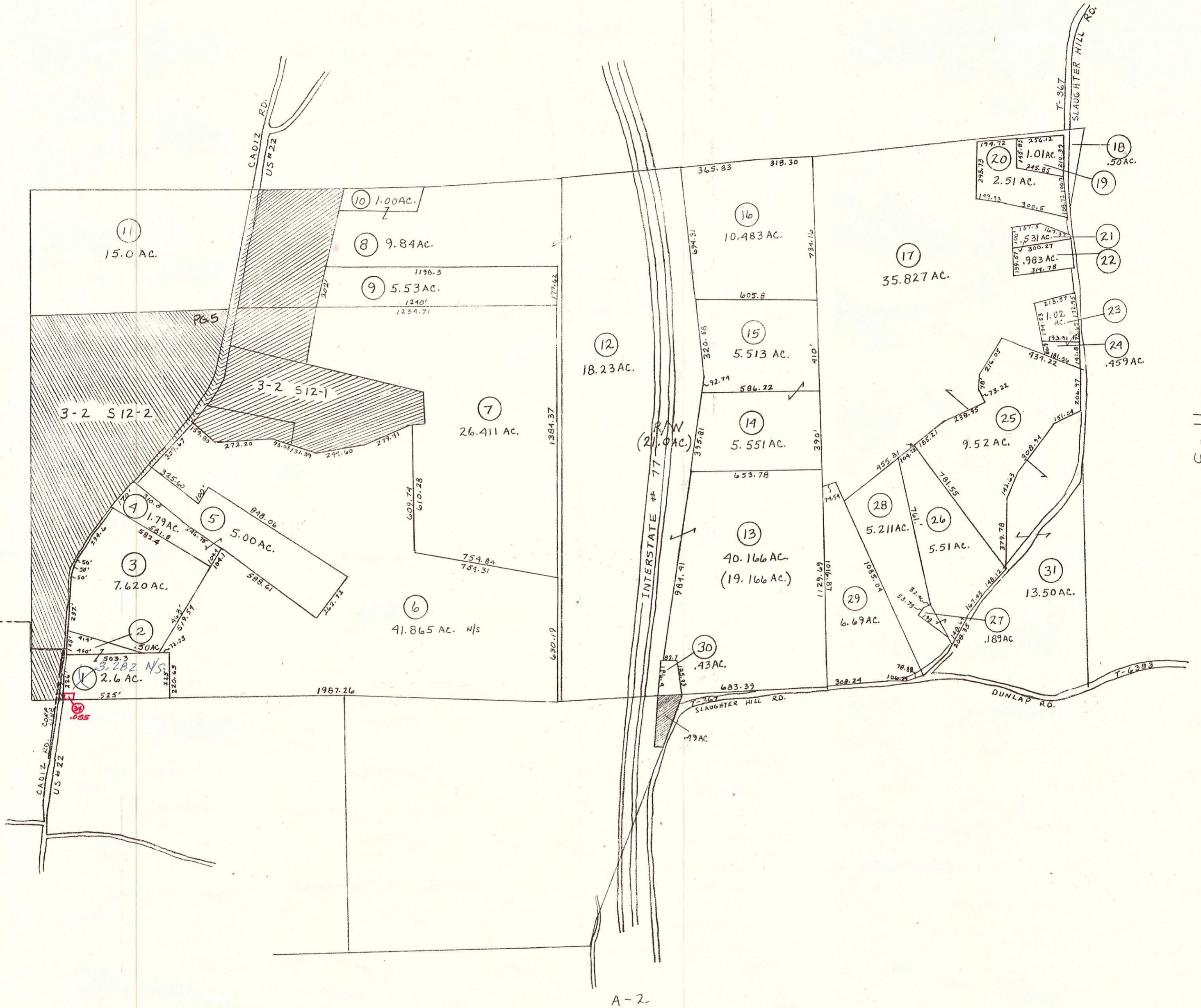


S-9

S-13

S-11



A-2

PRELIMINARY

MAPS IN THIS OFFICE ARE FOR TAX PURPOSES ONLY - VERIFY INFO. BY DEED RECORDS
T. BROWN - CO AUDITOR
T. PARNELL - CO. ENGINEER

THOMAS D. PARNELL co engineer	cartographer	Revised MER 3-27-86 MER 2-25-91	Aerial Photo	TAX MAP CAMBRIDGE TOWNSHIP GUERNSEY COUNTY OHIO	Range 3	Twp 2	Section S12
LEONARD PATTERSON co auditor	Drawn			scale 1" = 400'			4