

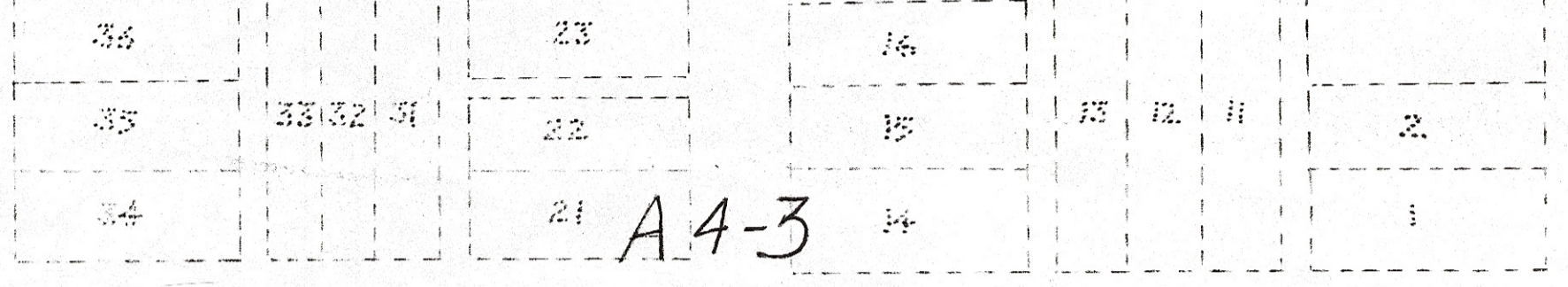
LOFLAND'S
THIRD

TAYLOR

AVENUE

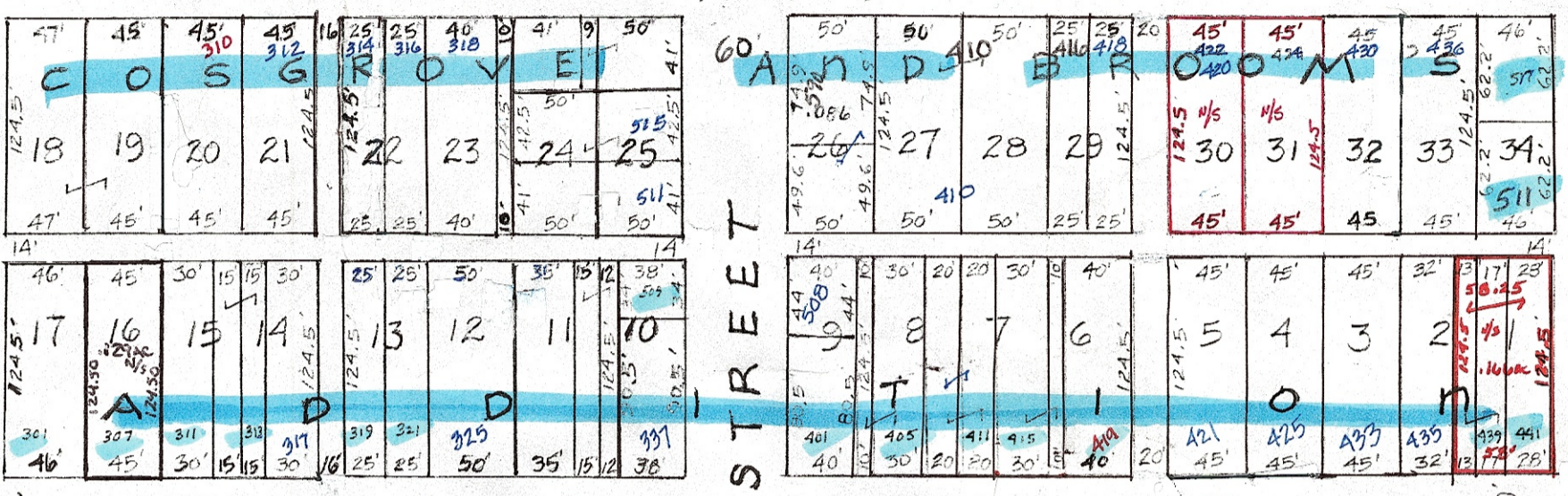
J. D. TAYLOR'S

HERRING AVENUE

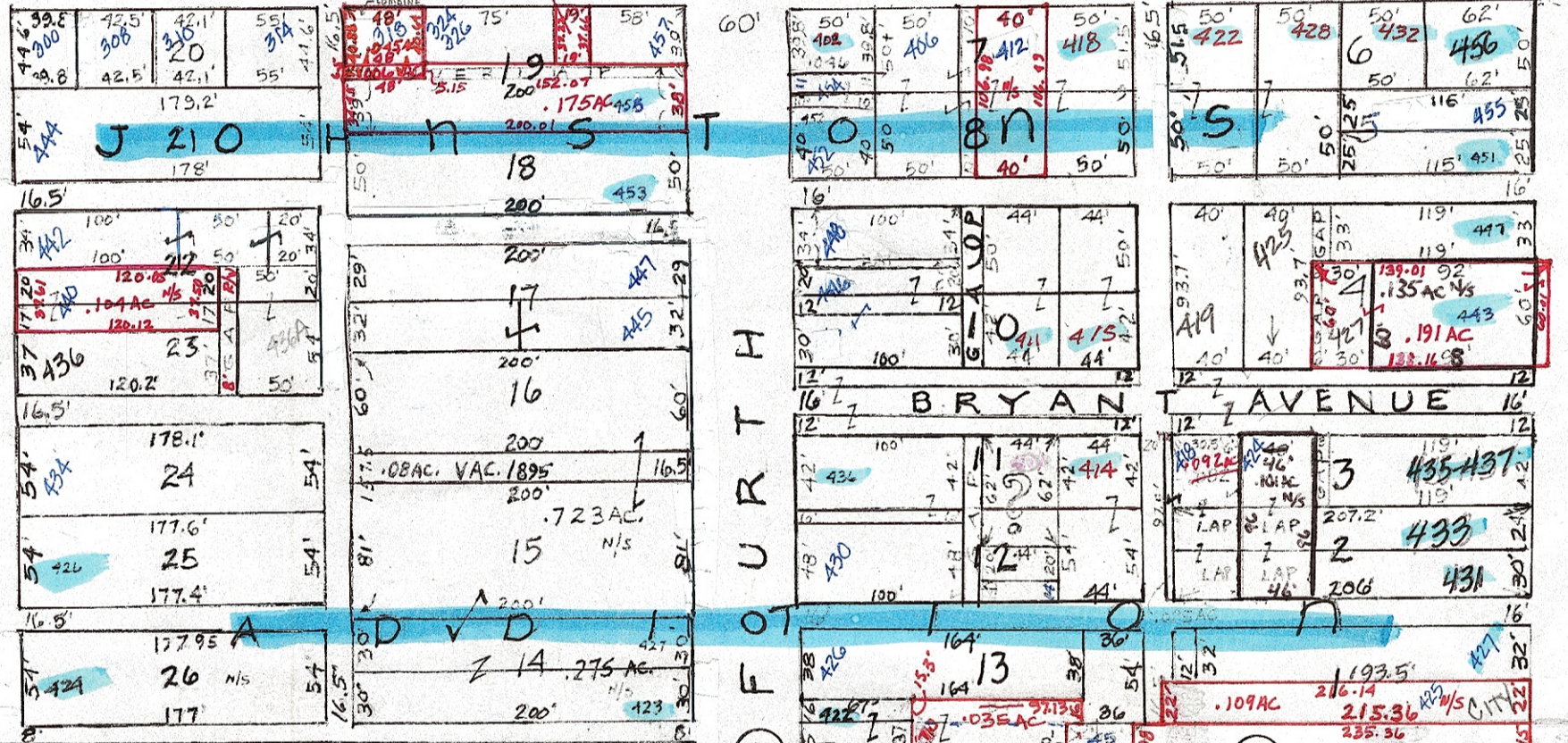


A4-3

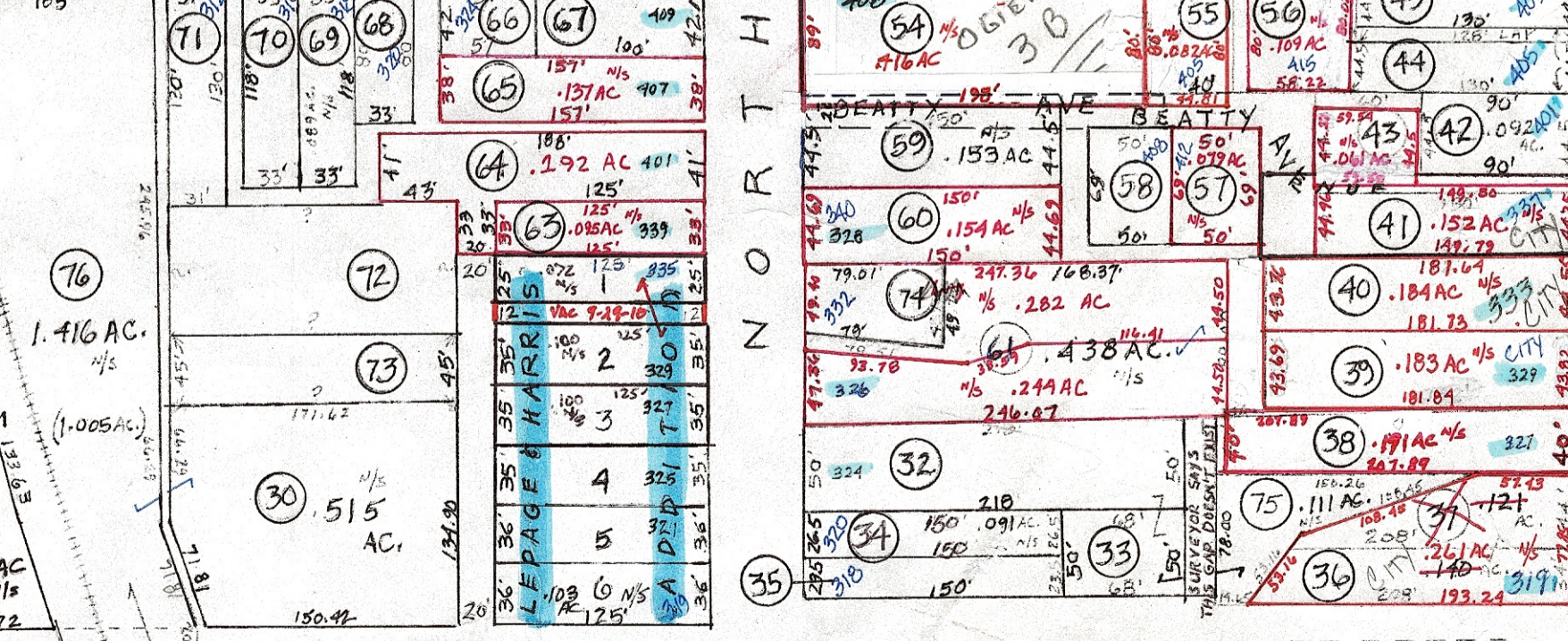
WALL AVENUE



FOSTER AVENUE



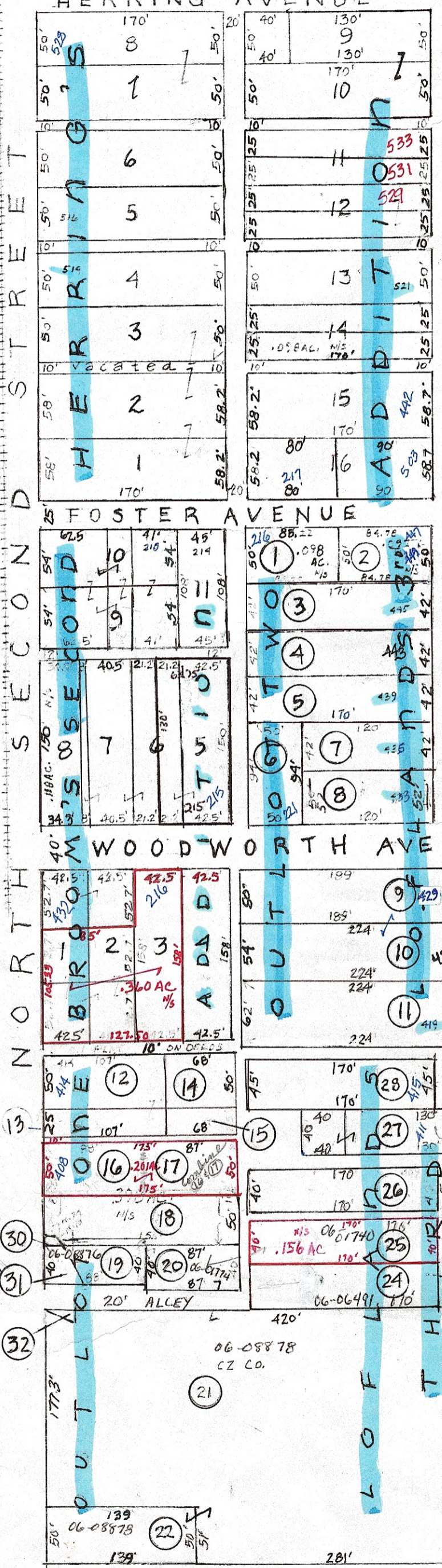
OGIER AVENUE



A4-10

A4-7

A4-8



NORTH THIRD STREET

NORTH THIRD STREET

CITY OF CAMB. 1379-97

FIFTH STREET

A3-14

DELMAR E. GEORGE
County Engineer

HOWARD R. KING
cartographer

Revised
M.R. 1995
M.R. 1985

Aerial Photo

TAX MAP
CAMBRIDGE CORPORATION
Scale 1"=100' GUERNSEY COUNTY OHIO

Range Twp
3 2 A4-4

Corp
page 51