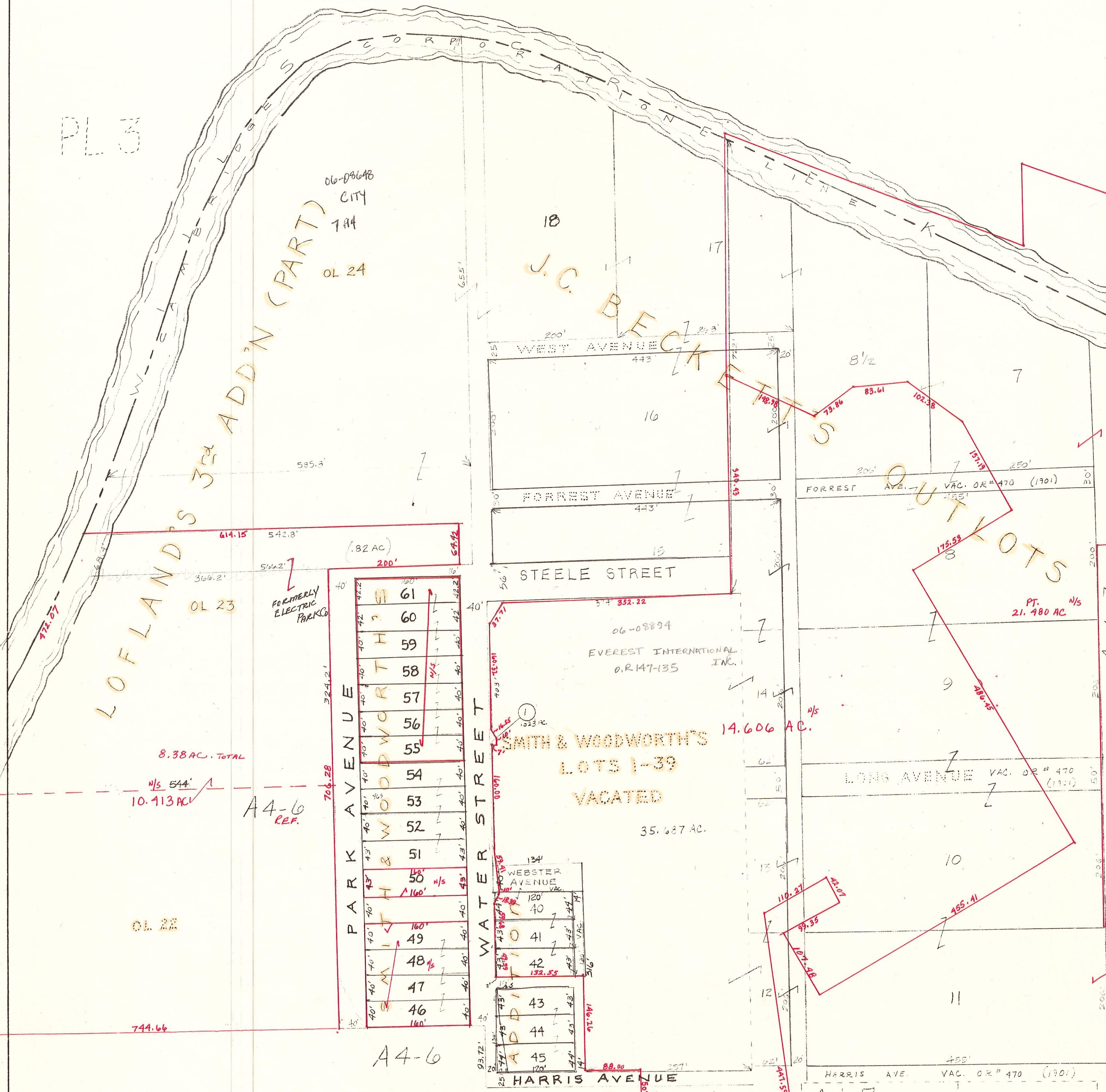


PL 3



LOFLAND'S 3RD ADDN (PART)

06-08648 CITY 784 OL 24

06-08894 EVEREST INTERNATIONAL INC. O.R. 147-135

SMITH & WOODWORTH'S LOTS 1-39 VACATED

OUTLOTS

PT. 21.480 AC N/S

FORMERLY ELECTRIC PARK

61	160'	43'	42'
60	160'	43'	42'
59	160'	43'	42'
58	160'	43'	42'
57	160'	43'	42'
56	160'	43'	42'
55	160'	43'	42'
54	160'	43'	42'
53	160'	43'	42'
52	160'	43'	42'
51	160'	43'	42'
50	160'	43'	42'
49	160'	43'	42'
48	160'	43'	42'
47	160'	43'	42'
46	160'	43'	42'
45	160'	43'	42'
44	160'	43'	42'
43	160'	43'	42'
42	160'	43'	42'
41	160'	43'	42'
40	160'	43'	42'

PRELIMINARY

MAPS IN THIS OFFICE ARE FOR TAX PURPOSES ONLY - VERIFY INFO. BY DEED RECORDS

T. BROWN - CO. AUDITOR

T. BROWN - CO. ENGINEER

page 52