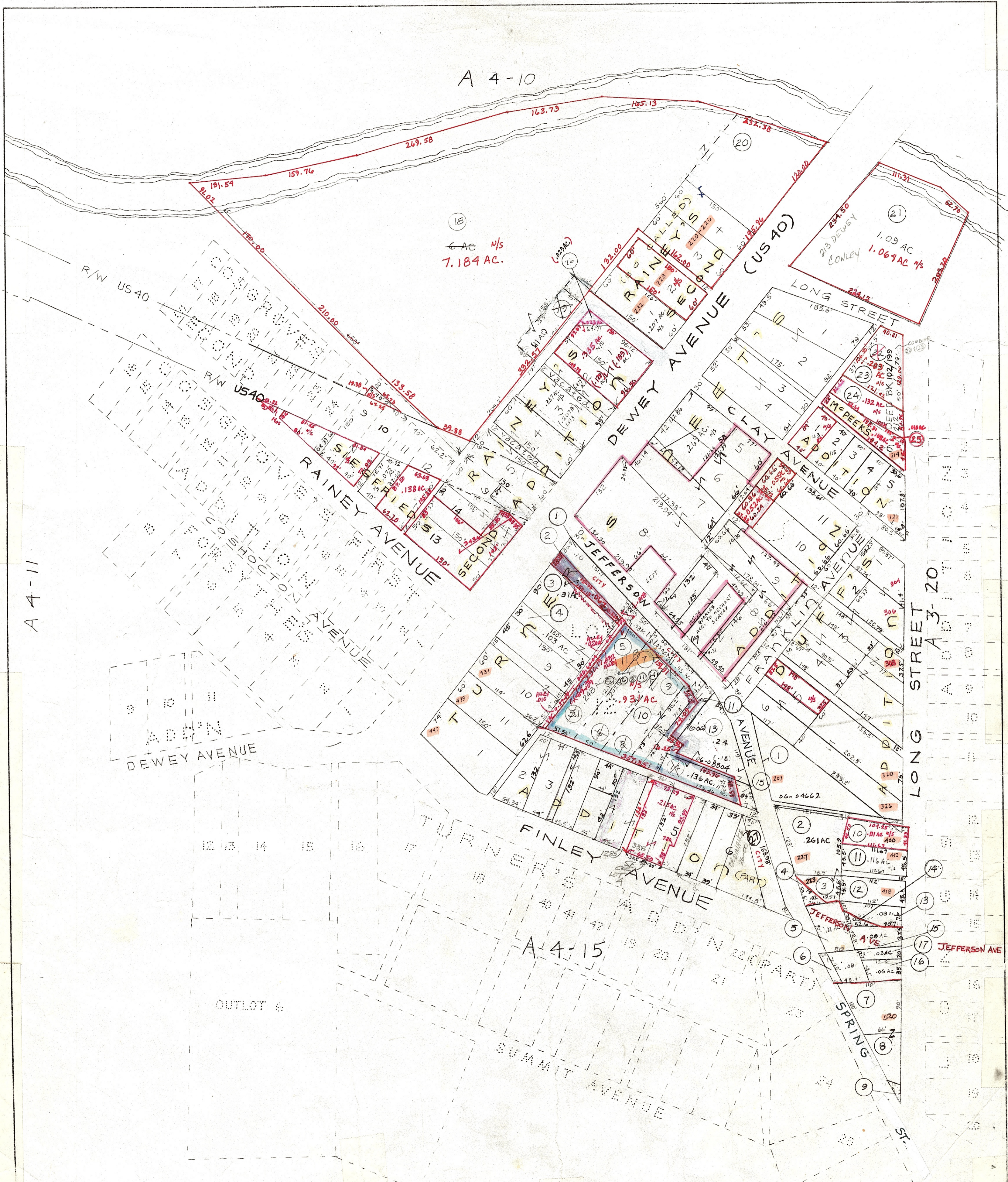


A 4-10



A 4-11

LONG STREET

ADDITIONAL

A 4-15

PRELIMINARY

MAPS IN THIS OFFICE ARE
FOR TAX PURPOSES
ONLY - VERIFY INFO. BY DEED RECORDS
T. BROWN - CO. AUDITOR
T. PARNELL - CO. ENGINEER

Corp (61)

| | | | | | | |
|----------------------------------|-------------------------------|----------------------|--------------|--|-------|---------|
| LLOYD A BROCKWELL co engineer | HOWARD R KING cartographer | Revised | Aerial Photo | TAX MAP CAMBRIDGE CORPORATION scale 1"=100' GUERNSEY COUNTY OHIO | Range | Twp |
| LEONARD PATTERSON co auditor | JEB '77 Drawn | MER 1993 MER 1995 | | | 3 | 2 A4-14 |