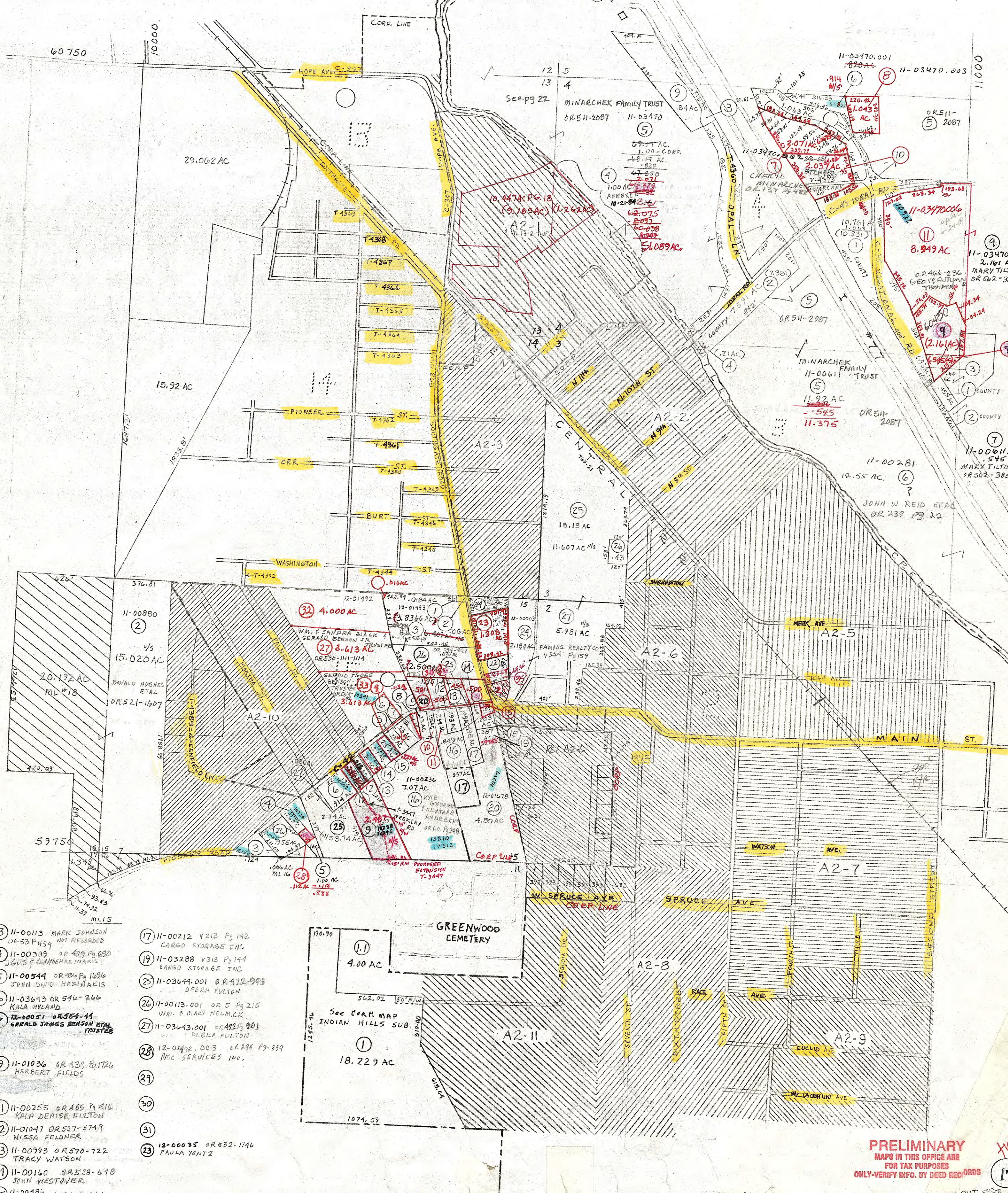


ML 4

- ⑥ 11-03470.001 O.R. 461-1158
EUGENE J. & CONNIE A. GRUM
- ⑧ 11-03470.003 O.R. 461-1158
EUGENE J. & CONNIE A. GRUM



- ③ 11-00113 MARK JOHNSON
OR 53 P 459 NOT RECORDED
- ④ 11-00339 OR 479 P 690
JULIUS & CONNIE HAZINAKIS
- ⑤ 11-00544 OR 436 P 1696
JOHN DAVID HAZINAKIS
- ⑥ 11-03643 OR 546-246
KALA HYLAND
- ⑦ 12-00051 OR 554-44
GERALD JAMES BRANSON ET AL
TRUSTEES
- ⑨ 11-01036 OR 439 P 1726
HERBERT FIELDS
- ⑪ 11-00255 OR 485 P 816
KALA DEWISE FULTON
- ⑫ 11-01047 OR 557-5749
NISSA FELDMER
- ⑬ 11-00793 OR 570-722
TRACY WATSON
- ⑭ 11-00160 OR 528-648
JOHN WESTOVER
- ⑮ 11-00486 V 334 P 984
11-00437
WILMA KIRKMAN
- ⑰ 11-00212 V 313 P 142
CARGO STORAGE INC
- ⑱ 11-03288 V 313 P 144
CARGO STORAGE INC
- ⑲ 11-03644.001 OR 422-993
DEBRA FULTON
- ⑳ 11-00113.001 OR 5 P 215
WM. & MARY HELMICK
- ㉑ 11-03643.001 OR 422 P 901
DEBRA FULTON
- ㉒ 12-01492.003 OR 294 P 339
AMC SERVICES INC.
- ㉓ 12-00095 OR 532-1746
PAULA YONTZ

PRELIMINARY
MAPS IN THIS OFFICE ARE
FOR TAX PURPOSES
ONLY-VERIFY INFO. BY DEED RECORDS

17

NOTE: TWO SETS OF PARCELS - IN CORP AND OUT

DELMAR E. GEORGE County Engineer TONY BROWN County Auditor	HOWARD R. KING cartographer Drawn	REV 1-74 Revised	Aerial Photo 3-69	TAX MAP JACKSON TWP. - BYESVILLE scale 1"=400' GERNSEY COUNTY OHIO FEB. 21, 1974	Range Twp. 3 1 A2	ML'S 2,3A, 15
---	---	---------------------	----------------------	--	-----------------------------	---------------