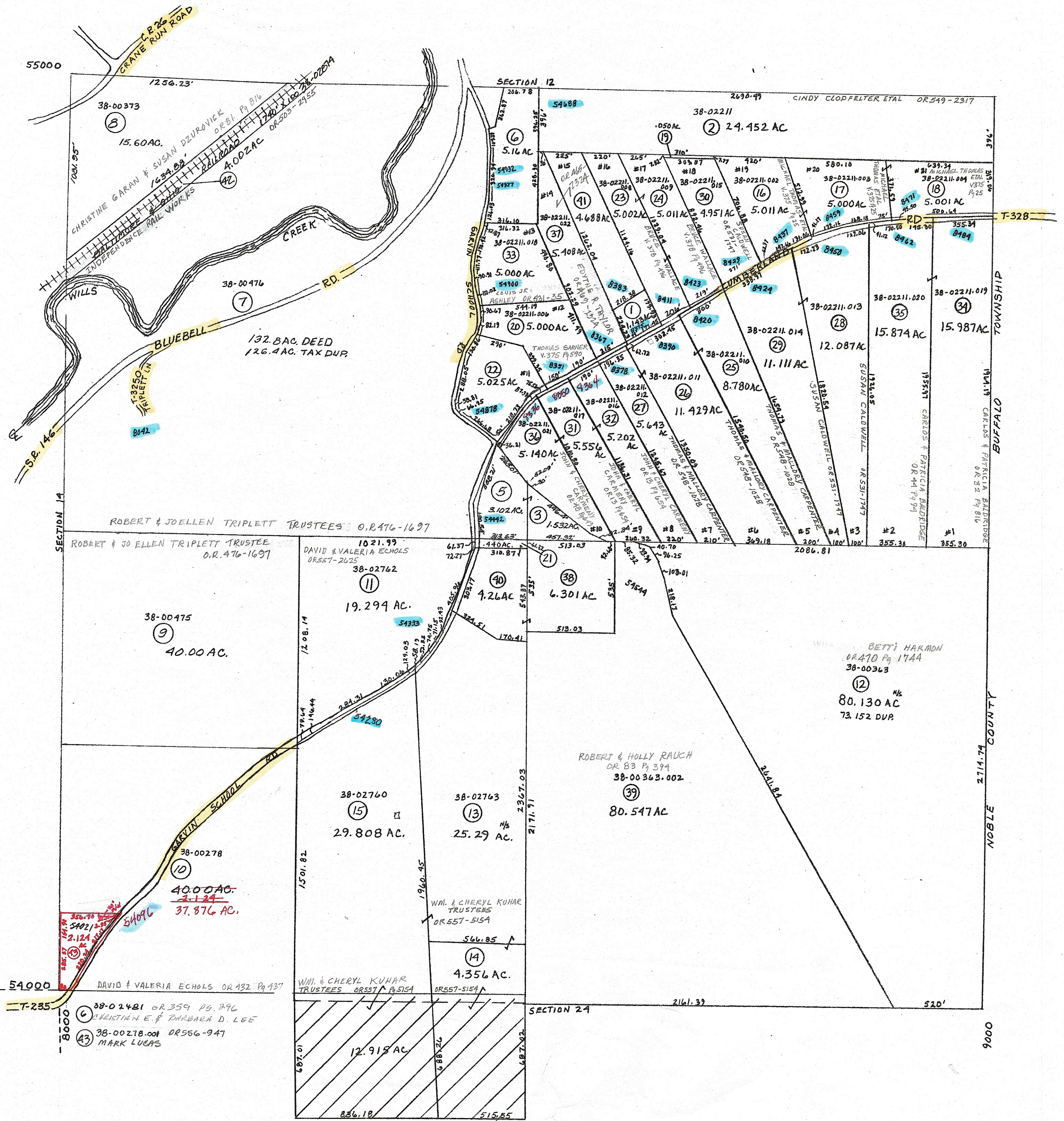


- ① 38-02211.001 OR 278 Pg 92
ERIC ERB
- ③ 38-02212 V. 374 Pg 386
DAVID & VALERIA ECHOLS
- ⑤ 38-00277 V. 374 Pg 386
DAVID & VALERIA ECHOLS
- ⑥ 38-02481 OR 115 Pg 635
LOUIS & EUGENEA ASHLEY
- ⑭ 38-02761 OR 122 Pg 412
WM. & CHERYL KUHAR
- ⑰ 38-02211.005 OR 549-2317
CINDY CLODFELTER ETAL
- ⑳ 38-02763.001 V. 375 Pg 851
DAVID & VALERIA ECHOLS
- ㉒ 38-02211.007 OR 525-879
JOHN RUSSELL & LACY GRESS

- ㉓ 38-00363.001 OR 65 Pg 12
DAVID & VALERIA ECHOLS
- ㉔ 38-02763.002 OR 115 Pg 20
DAVID & VALERIA ECHOLS
- ㉕ 38-02211.023 OR 258 Pg 1
FRANK TAYLOR & EDYTHE KLINE



PRELIMINARY
 MAPS IN THIS OFFICE ARE
 FOR TAX PURPOSES
 ONLY-VERIFY INFO. BY DEED RECORDS

40

DELMAR E. GEORGE County Engineer TONY BROWN County Auditor	HOWARD R KING cartographer BMF Drawn 4-81	MER 11/85 MER 2-03 Revised	Aerial Photo #140 1" = 400' scale	TAX MAP VALLEY TWP. GUERNSEY COUNTY OHIO	Range 10	TWP 9	513
---	--	----------------------------------	--	--	-------------	----------	-----