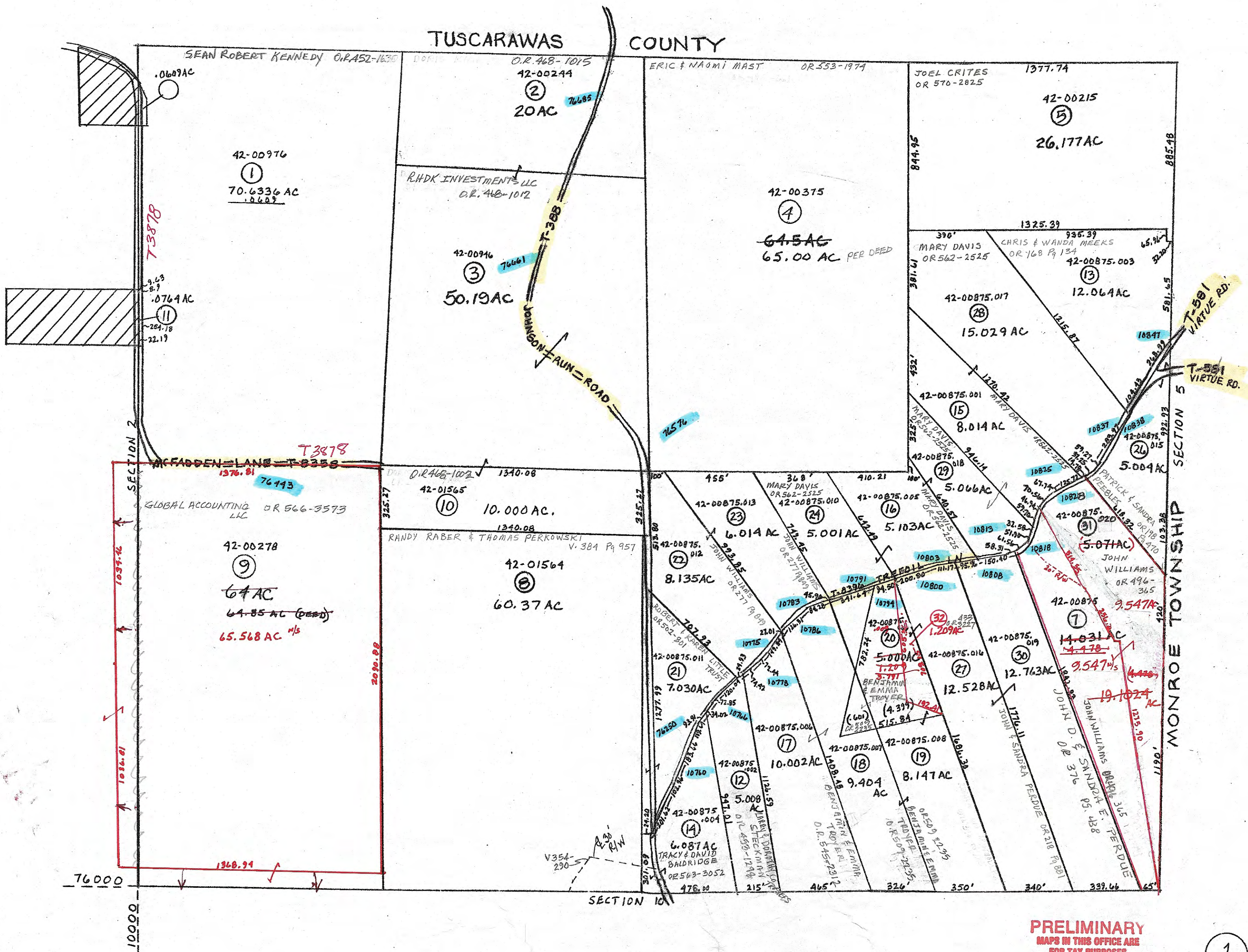


- ⑪ 42-00977 OR 242 Pg 222
SEAN KENNEDY
- ⑫ 42-00875.014 OR 483 Pg 3227
JOHN & SANDRA PERDUE

TUSCARAWAS COUNTY



PRELIMINARY
MAPS IN THIS OFFICE ARE
FOR TAX PURPOSES
ONLY-VERIFY INFO. BY DEED RECORDS

①

<p>DELMAR E. GEORGE County Engineer</p> <p>TONY BROWN County Auditor</p>	<p>HOWARD R KING cartographer</p> <p>JBS '82 Drawn</p>	<p>MER 3-03</p> <p>Revised</p>	<p>Aerial Photo 2-G-178, 180 (not good) old # 4-G-123</p>	<p>TAX MAP WHEELING TOWNSHIP GUERNSEY COUNTY OHIO</p> <p>scale 1" = 400'</p>	<p>Range 3</p>	<p>Twp 4</p>	<p>SI 1</p>
--	---	--------------------------------	---	--	--------------------	------------------	-----------------