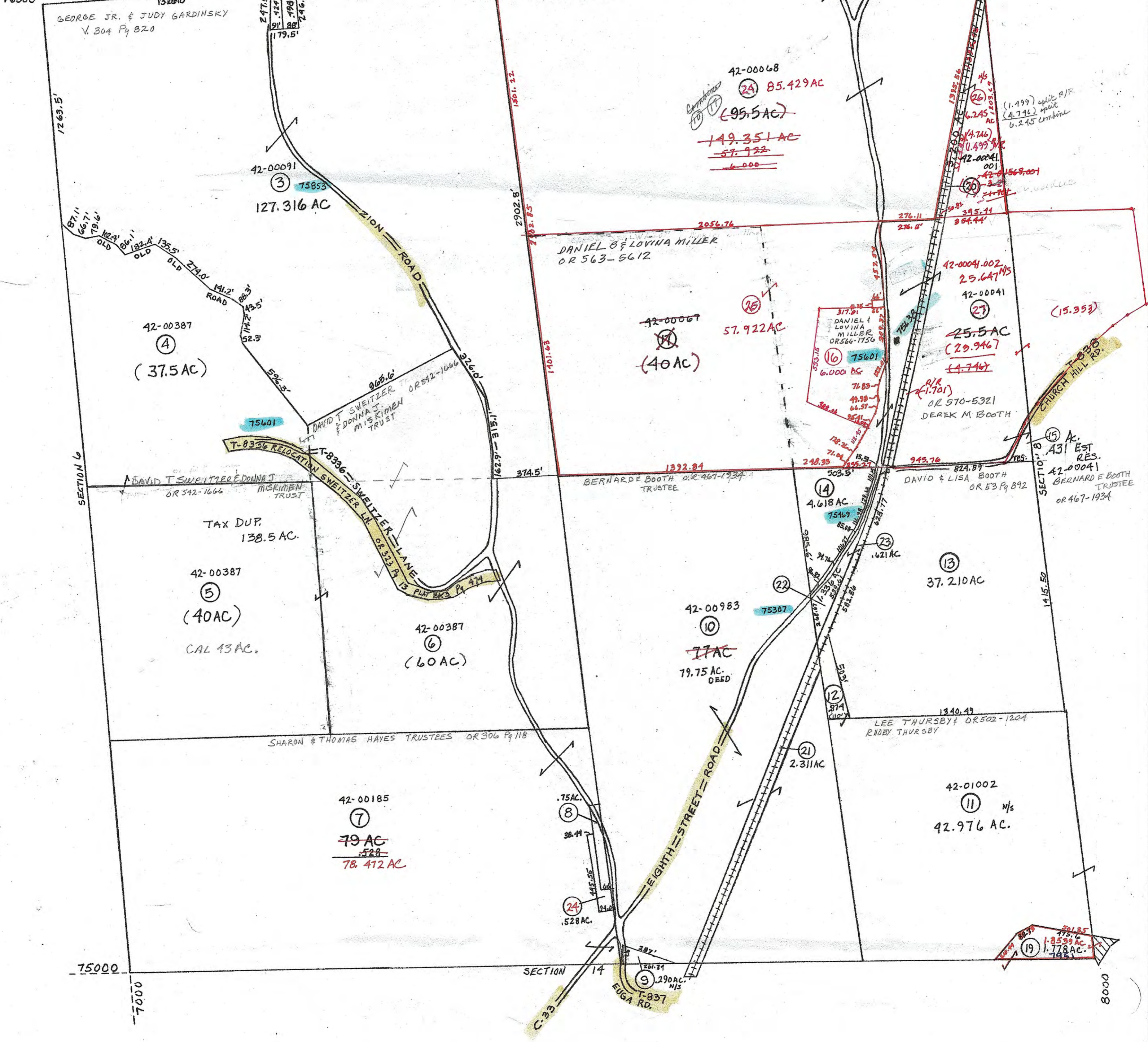


- ① 42-01601 IDA ROBERTS OR 555-109
- ② 42-00437 V. 283 Pg 463 ELBERT & KATHRYN WILTSHIRE
- ⑧ 1841 V. O Pg 426 42-00899 GUERNSEY CEMETERY
- ⑨ 42-00103 OR 467-1984 BERNARDE BOOTH TRUSTEE
- ⑫ 42-00194 OR 502-1204 LEE & RHOBY THURSBY
- ⑭ 42-00404 OR 99 Pg 304 JERRY & SANDRA PRINCE
- ⑰ 42-01003 OR 363 Pg 796 GARY SR & JODY SCHULER
- ⑳ 42-01568.001 OR 467-1984 BERNARD BOOTH TRUSTEE
- ㉑ 42-01568.003 OR 467-1984 BERNARD BOOTH TRUSTEE
- ㉒ 42-00404.001 OR 98 Pg 610 DAVID BOOTH
- ㉓ 42-01568 OR 55 Pg 899 DAVID BOOTH
- ㉔ 42-00185-001 OR 521-1163 WHEELING TWP TRUSTEES
- ㉕ 42-00041.001 OR 570-4721 LINDA S BOOTH TRUSTEE



PRELIMINARY
 MAPS IN THIS OFFICE ARE
 FOR TAX PURPOSES
 ONLY-VERIFY INFO. BY DEED RECORDS

13

DELMAR E. GEORGE County Engineer TONY BROWN County Auditor	HOWARD R KING cartographer JBS '82 Drawn	Revised MAY 92 MER MER 3-03	Aerial Photo 2-G-236 new # 3	TAX MAP WHEELING TOWNSHIP GUERNSEY COUNTY OHIO scale 1" = 400'	<table border="1"> <tr> <td>Range</td> <td>Twp</td> </tr> <tr> <td>3</td> <td>4 57</td> </tr> </table>	Range	Twp	3	4 57
Range	Twp								
3	4 57								