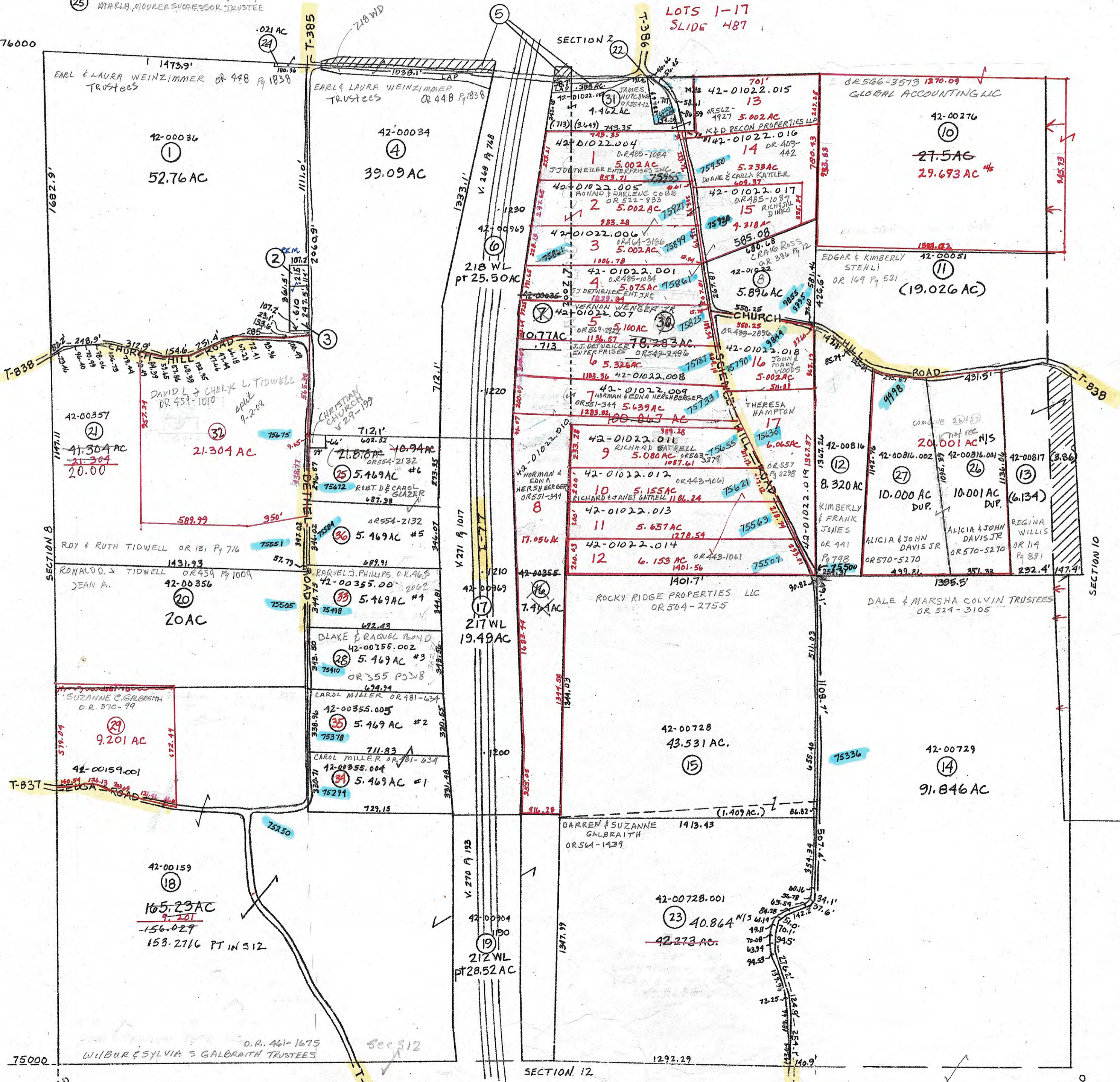


- ② 42-00902 V.39 P.111
BETHEL CEMETERY
- ③ 42-00903 V.151 P.234
BETHEL CEMETERY
- ⑤ 42-00901 V.268 P.770
STATE OF OHIO
- ⑨
- ⑫ 42-01023 OR 554-12
JAMES HUTCHING
- ⑮ 42-00036.001 OR 561-1974
BARBARA LALLITHAN
- ⑳ 42-00355.001 OR 418-3262
MARKLE, MODER, SUCCESSOR TRUSTEE

SCIENCE HILL PROPERTY
LOTS 1-17
SLIDE 487



PRELIMINARY
MAPS IN THIS OFFICE ARE
FOR TAX PURPOSES
ONLY-VERIFY INFO. BY DEED RECORDS

15

DELMAR E. GEORGE County Engineer TONY BROWN County Auditor	HOWARD R KING cartographer JBS '82 Drawn	MER 4-03 Revised	Aerial Photo 2-G-180 NEW #4	TAX MAP WHEELING TOWNSHIP GUERNSEY COUNTY OHIO scale 1"=400'	Range Twp 3 4 59
---	---	------------------	-----------------------------------	---	---------------------