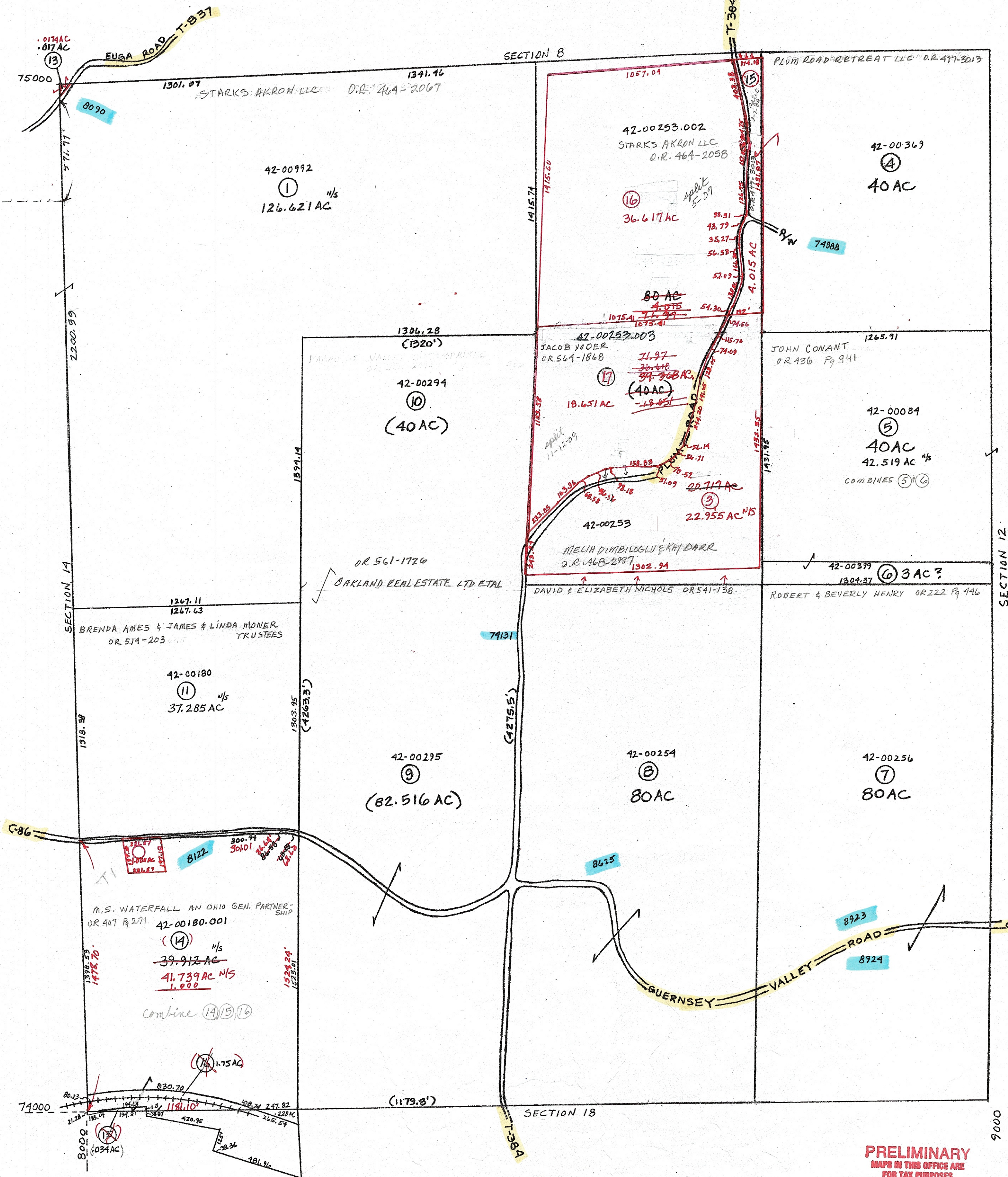


- ⑬ 42-00993 OR 243 Pg 776
GARY SR & JODY SCHULER
- ⑮ 42-00180.002 OR 417 Pg 2013
PLUM RD RETREAT LLC
- ⑯ 42-01570.001 OR 299 Pg 177
SHEILA WELCH
- ⑰ 42-00253.001 O.R. 461-2048
ROBTE & BERNADINE ALLEN



DELMAR E. GEORGE County Engineer TONY BROWN County Auditor	HOWARD R KING cartographer JRS '82 Drawn	MER 6-'03 Revised	Aerial Photo OLD 4-6-70 NEW # 12	TAX MAP WHEELING TOWNSHIP GUERNSEY COUNTY OHIO scale 1"=400'	Range 3	Twp. 4 S13
---	--	----------------------	--	--	------------	---------------