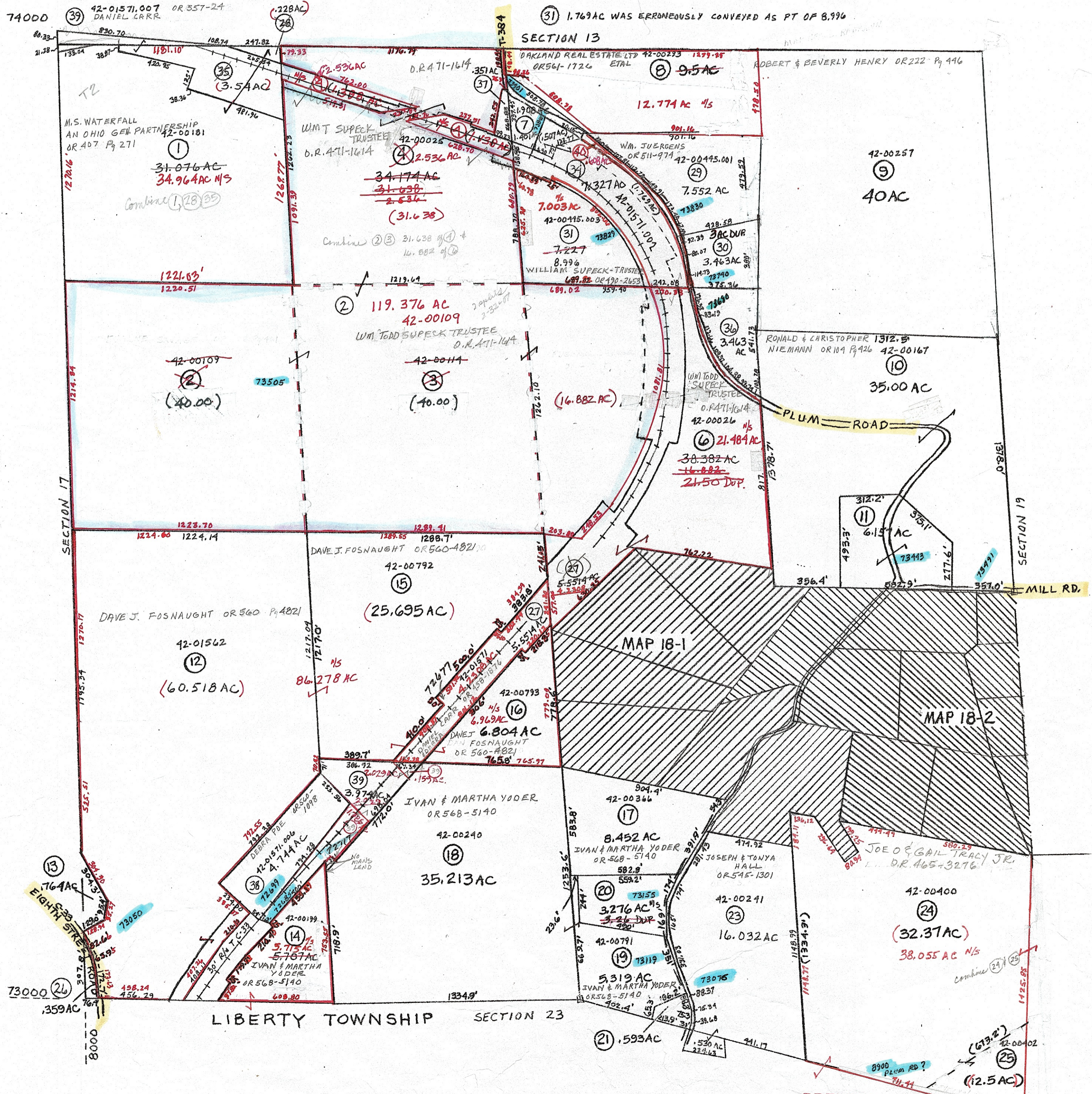


- ⑦ 42-00445 OR 558-307 JASON MCINTEE
- ⑪ 42-00031 OR 567-1284 BERNARD SCHREINER
- ⑬ 42-00975 OR 115 P. 124 DONALD & STACIE SNOWBERGER
- ⑳ 42-00396 OR 568-5140 IVAN & MARTHA YODER
- ㉑ 42-00790 OR 201 P. 445 MARK & BOBBI LAWTON
- ㉒ 42-01563 OR 458 P. 3457 KEVIN T & HEATHER D. HANENKRAT
- ㉔ 42-00181.001 OR 250 P. 842 M.S. WATERFALL AN OHIO GEN PARTNERSHIP
- ㉕ 42-00445.002 OR 195 P. 589 DANIAL JUERGENS
- ㉗ 42-01571.002 OR 411-1614 W.M.T. SUPECK TRUSTEE
- ㉘ 42-01571.005 OR 299 P. 714 SHEILA WELCH
- ㉚ 42-00026.001 OR 559-1867 DAVID VANMETER
- ㉛ 42-00025.001 OR 558-307 JASON MCINTEE
- ㉜ 42-01571.007 OR 357-24 DANIEL CARR

(Between RD & RR)
 ④ 42-01702 OR 506-1892
 W.M.T. SUPECK TRUSTEE

⑦ .507AC WAS ERRONEOUSLY CONVEYED AS PT OF 1.908
 ⑩ 1.769AC WAS ERRONEOUSLY CONVEYED AS PT OF 8.996



PRELIMINARY
 MAPS IN THIS OFFICE ARE
 FOR TAX PURPOSES
 ONLY-VERIFY INFO. BY DEED RECORDS