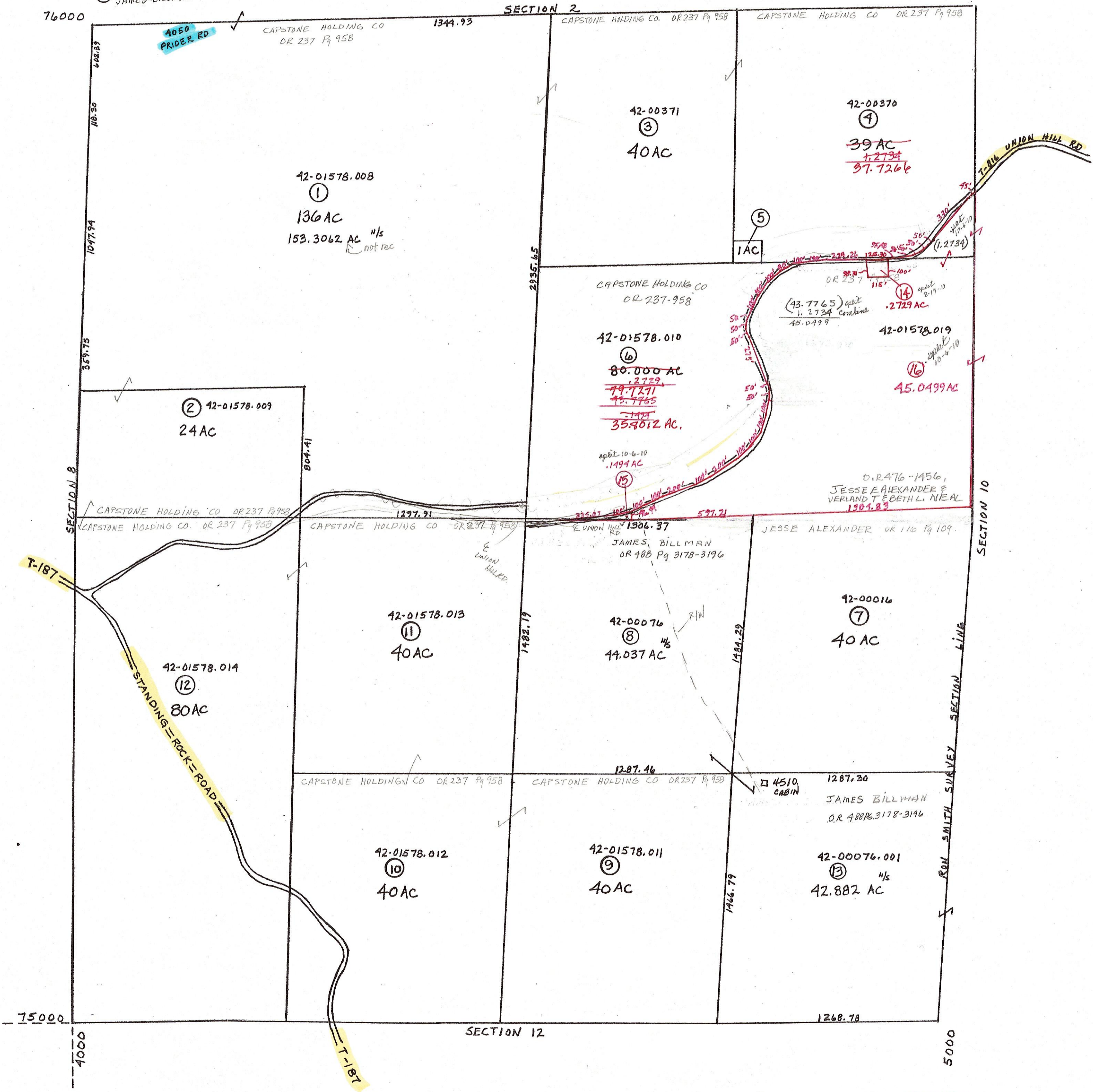


- (5) 42-00259 1943
EDMAN MICHEL
- (14) 42-01578.018 O.R. 413-2233
WHEELING TWP TRUSTEES EA OF
- (15) 42-01578.020 OR 488 Pg 3178
JAMES BILLMAN



PRELIMINARY
MAPS IN THIS OFFICE ARE
FOR TAX PURPOSES
ONLY-VERIFY INFO. BY DEED RECORDS

10

DELMAR E. GEORGE County Engineer TONY BROWN County Auditor	HOWARD R KING cartographer JBS '82 Drawn	MER 3-'03 Revised	Aerial Photo 2-6-38 OLD 1-6-61-bad NEW #1	TAX MAP WHEELING TOWNSHIP GUERNSEY COUNTY OHIO	Range 4	Twp 4	59
scale 1" = 400'							