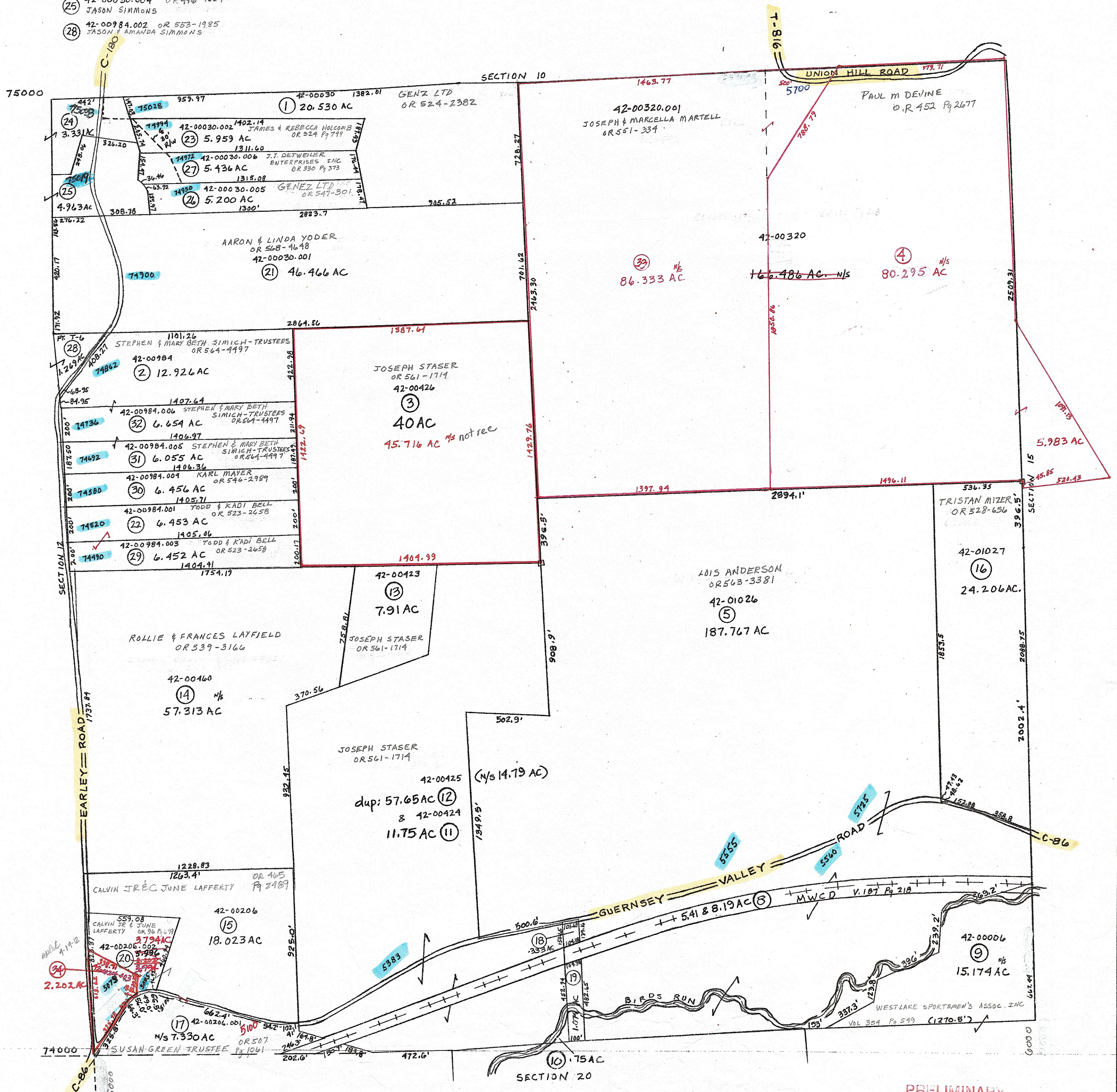


- ⑩ 42-00420 OR 561-1714  
JOSEPH STASER
- ⑱ 42-01026.001 OR 6 Pg 987  
WESTLAKE SPORTSMEN ASSOC. INC
- ⑲ 42-01026.002 OR 6 Pg 987  
WESTLAKE SPORTSMEN ASSOC INC
- ⑳ 42-00030.003 OR 481-3497  
JASON SIMMONS
- ㉑ 42-00030.004 OR 496-1664  
JASON SIMMONS
- ㉒ 42-00984.002 OR 553-1985  
JASON & AMANDA SIMMONS

42-00206.003 OR 493-2998  
SHAWN T. LAFFERTY



PRELIMINARY  
MAPS IN THIS OFFICE ARE  
FOR TAX PURPOSES  
ONLY-VERIFY INFO. BY DEED RECORDS

23

DELMAR E. GEORGE County Engineer TONY BROWN County Auditor	HOWARD R KING cartographer Drawn	MER 8-03 Revised	Aerial Photo OLD 2-G-27 NEW #11	TAX MAP WHEELING TOWNSHIP scale 1" = 400' GUERNSEY COUNTY OHIO	Range 4	Twp 4	S11
---	--	------------------	---------------------------------------	---	------------	----------	-----