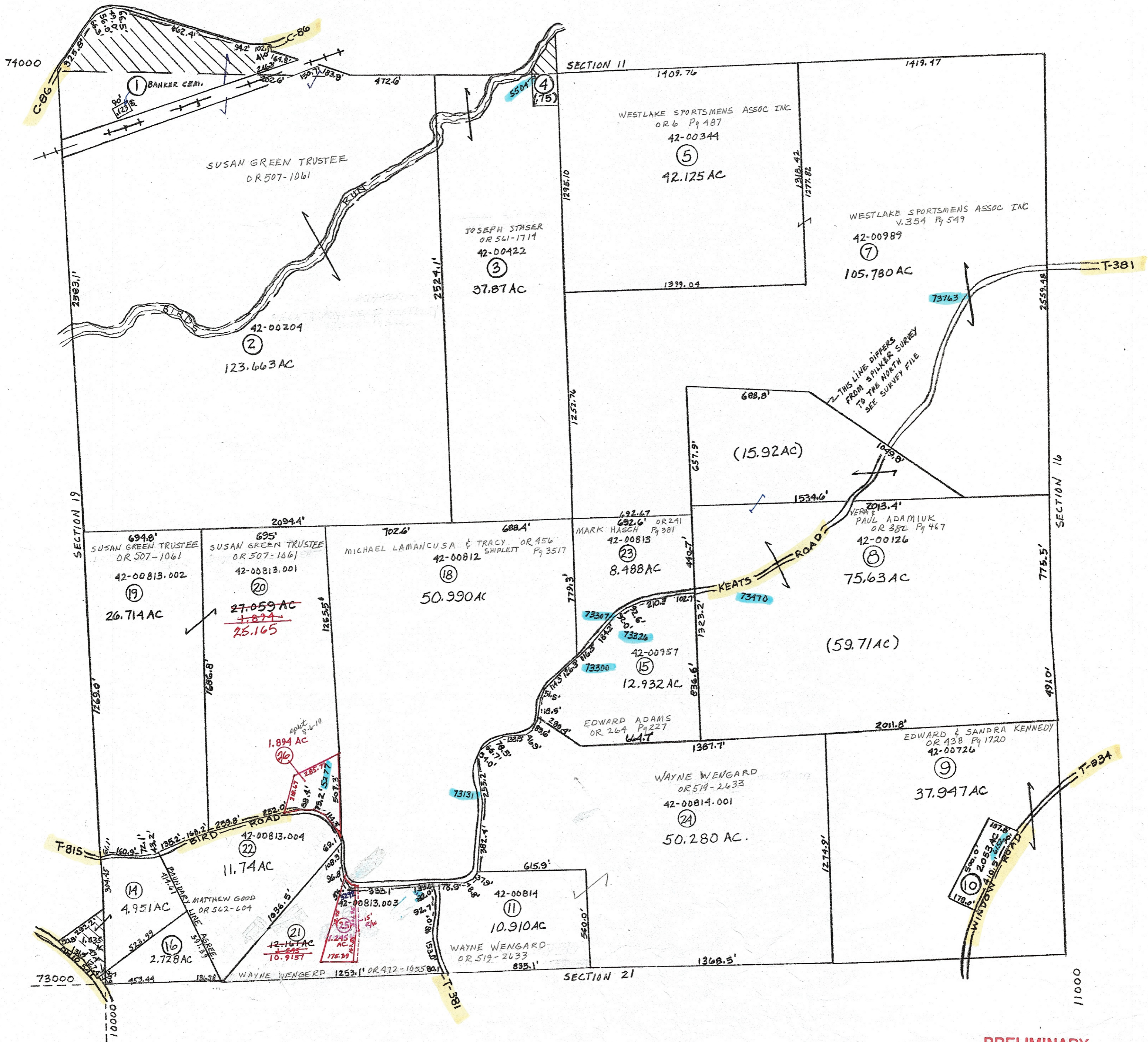


- ④ 42-00421 OR 561-1714  
JOSEPH STASER
- ⑩ 42-00727 V. 319 Pg 515  
EDWARD KENNEDY & SANDRA FIRSTER
- ⑭ 42-00431 OR 553-3021  
KEVIN MEADOWS
- ⑯ 42-00857.001 OR 535-3033  
MATTHEW J. GOOD
- ⑳ 42-00813.005 OR 568-45  
WAYNE WENGARD
- ㉑ 42-00813.006 OR 473-499  
JOSHUA T. LAFFERTY



**PRELIMINARY**  
MAPS IN THIS OFFICE ARE  
FOR TAX PURPOSES  
ONLY-VERIFY INFO. BY DEED RECORDS

<p><b>DELMAR E. GEORGE</b> County Engineer</p> <p><b>TONY BROWN</b> County Auditor</p>	<p><b>HOWARD R KING</b> cartographer</p> <p>JBS '82 Drawn</p>	<p>MER 10-'03 Revised</p>	<p>Aerial Photo 2-G-27 OLD 2-G-27 NEW # 11</p>	<p><b>TAX MAP</b> WHEELING TOWNSHIP GUERNSEY COUNTY OHIO</p> <p>scale 1" = 400'</p>	<p>Range 4</p>	<p>Twp 4</p>	<p>S20</p>
--	---	---------------------------	--	---	--------------------	------------------	------------