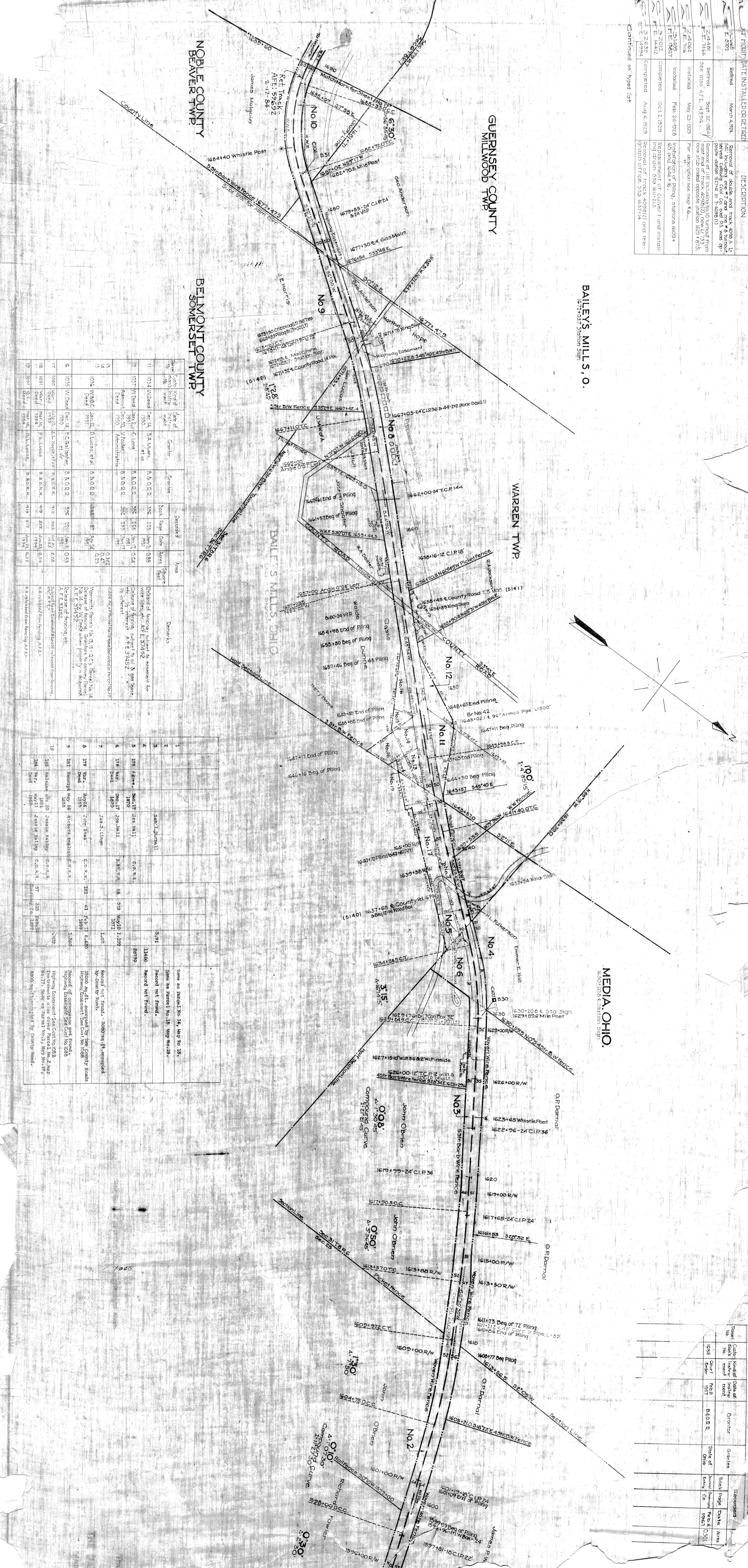


FILE NO.	DATE INSTALLED OR RETIRED	DESCRIPTION
2-2-485 L 5702	March 4, 1924	Removal of double end track 408 A 1/2 mile including one end of 4 turn-out served Caburg Coal Co. east of Sta. 1609 (1) from station 1674 in F-408 (1)
2-2-481 L 5706	Sept. 22, 1924	Removal of 110' location No. 10 turnout from row stub ended opposite station 1629 + 57.5. For description see map 6-A.
2-2-482 F.E. 716	Installed May 23, 1923	Installation of piling, stations 1609 + 63 and 1646 + 16.
2-2-483 F.E. 18827	Installed Feb. 26, 1923	Replacement of culvert 1 and installation of drain Sta. 161 + 212.
2-2-484 F.E. 14412	Completed Oct. 2, 1923	Removal of track 409 A (2) and installation of drain Sta. 161 + 212.
2-2-485 F.E. 14394	Completed Aug. 6, 1923	Removal of track 409 A (2) and installation of drain Sta. 161 + 212.

Continued on Typed list



BAILEY'S MILLS, O.
167+03.7 Station Sign

MEDIA, OHIO.
1630+20.6 Station Sign

Sheet No.	County	Date of Issue	Generator	Genrate	Book	Page	Date	Area	Remarks
11	Belmont	Dec. 14, 1920	S. A. Waters	8.8 Q.R.R.	350	723	Jan. 3, 1928	0.212	Change of location subject to consent for removal of fence at E. 374 1/2
12	Belmont	Jan. 2, 1921	C. Long	8.8 Q.R.R.	306	255	Jan. 7, 1924	0.104	Change of location subject to consent for removal of fence at E. 374 1/2
13	Belmont	Dec. 20, 1920	W. Probst	8.8 Q.R.R.	296	255	Jan. 7, 1924	0.104	Change of location subject to consent for removal of fence at E. 374 1/2
14	Belmont	Dec. 20, 1920	H. W. Probst	8.8 Q.R.R.	296	255	Jan. 7, 1924	0.104	Change of location subject to consent for removal of fence at E. 374 1/2
15	Belmont	Jan. 12, 1921	D. L. Linn	8.8 Q.R.R.	888	87	Apr. 24, 1924	0.142	Change of location subject to consent for removal of fence at E. 374 1/2
16	Belmont	Dec. 14, 1920	E. C. Hoffner	8.8 Q.R.R.	396	221	Jan. 3, 1928	0.159	Change of location subject to consent for removal of fence at E. 374 1/2
17	Belmont	Jan. 12, 1921	S. L. Hoffner	8.8 Q.R.R.	412	322	Jan. 3, 1928	0.246	Change of location subject to consent for removal of fence at E. 374 1/2
18	Belmont	Mar. 19, 1924	D. L. Linn	8.8 Q.R.R.	419	517	Jan. 3, 1928	0.24	Change of location subject to consent for removal of fence at E. 374 1/2
19	Belmont	Dec. 14, 1920	D. L. Linn	8.8 Q.R.R.	419	517	Jan. 3, 1928	0.22	Change of location subject to consent for removal of fence at E. 374 1/2

Sheet No.	County	Date of Issue	Generator	Genrate	Book	Page	Date	Area	Remarks
1	Belmont	Jan. 3, 1928	same as above	8.8 Q.R.R.	350	723	Jan. 3, 1928	0.212	See as above No. 15, Map No. 15.
2	Belmont	Jan. 3, 1928	same as above	8.8 Q.R.R.	350	723	Jan. 3, 1928	0.212	See as above No. 15, Map No. 15.
3	Belmont	Jan. 3, 1928	same as above	8.8 Q.R.R.	350	723	Jan. 3, 1928	0.212	See as above No. 15, Map No. 15.
4	Belmont	Jan. 3, 1928	same as above	8.8 Q.R.R.	350	723	Jan. 3, 1928	0.212	See as above No. 15, Map No. 15.
5	Belmont	Dec. 17, 1920	J. S. M. I.	8.8 Q.R.R.	306	255	Jan. 7, 1924	0.104	Record not found.
6	Belmont	Dec. 17, 1920	J. S. M. I.	8.8 Q.R.R.	306	255	Jan. 7, 1924	0.104	Record not found.
7	Belmont	Dec. 17, 1920	J. S. M. I.	8.8 Q.R.R.	306	255	Jan. 7, 1924	0.104	Record not found.
8	Belmont	Dec. 17, 1920	J. S. M. I.	8.8 Q.R.R.	306	255	Jan. 7, 1924	0.104	Record not found.
9	Belmont	May 24, 1923	R. C. H. I.	8.8 Q.R.R.	63	319	Nov. 20, 1924	1.109	Record not found. - 5000 sq. ft. occupied by building.
10	Belmont	May 24, 1923	R. C. H. I.	8.8 Q.R.R.	63	319	Nov. 20, 1924	1.109	Record not found. - 5000 sq. ft. occupied by building.

Page No.	Cut or dms. No.	Kind of Instrument	Date of Issue	Generator	Genrate	Book	Page	Date	Area
1038	1038	Survey	1927	E. J. R.	8.8 Q.R.R.	610	8	0.201	
1039	1039	Survey	1927	E. J. R.	8.8 Q.R.R.	610	8	0.201	

Sheet No. 1038

nd Sales, etc.