

SHEET NO.
RANGE-TWP.-SEC. SUB. SHT.

06-00262

TOWNSHIP

CARD No.

REMARKS

3 2 18-25

CAMBRIDGE CORP.

~~577~~
Woodsack Ave
Chestnut St

Pt. Lot #42

LOT OR PARCEL NO.

CORPORATION OR VILLAGE

SUBDIVISION

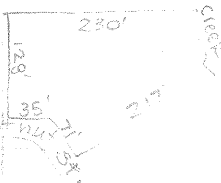
96

OUTLOT

NEW DESCRIPTION NECESSARY FOR
FUTURE TAX MAP TRANSFER
TONY CROW

GUERNSEY COUNTY AUDITOR
DELMAR E. GEORGE
GUERNSEY COUNTY ENGINEER

DATE: 7-24-01
SIGNATURE: [Signature]



LET. A

LET. B

LET. C

LET. D

LET. E

.80

GRANTEE

TRANS. DATE

VOL.

PAGE

LET.

TRANS. DATE

VOL.

PAGE

SPLIT NO.

NORDHAUS, EMMA

MAGERS, WILLIAM L. & WANDA E.

MAGERS, WANDA E.

MAGERS, JEFFREY W.

10-27-71

293 1

9-23-98

196 233

7-24-01

283 964

SPLIT DATA

(OVER)