

SHEET NO.
RANGE-TWP.-SEC. SUB. SHT.

06-00667

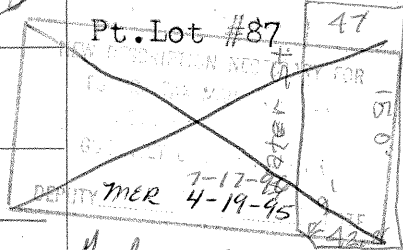
TOWNSHIP
CAMBRIDGE TWP.

CARD No.

REMARKS

3 2 A4-9 9

71



LOT OR PARCEL NO.

CORPORATION OR VILLAGE

SUBDIVISION

Pt. Lot 87

CAMBRIDGE CITY CORP.

LOFLAND SECOND

LET. A

LET. B

LET. C

LET. D

LET. E

LET. F

GRANTEE

TRANS. DATE

VOL.

PAGE

LET.

TRANS. DATE

VOL.

PAGE

SPLIT NO.

ANDERSON, RAY H.

4-24-69

281

904

BALL, JAMES R. JR.

8-18-75

313

930

BALL, JAMES R. JR. & LOIS E. BALL

4-19-95

105

98

BALL, LOIS E.

7-17-96

134

727

CITY OF CAMBRIDGE

3-25-02

310

132

SPLIT DATA

(OVER)