

# SIENNA WOODS SUBDIVISION

Timothy E. Buckley  
0.898 ac. tr.  
D.V.381, P.908

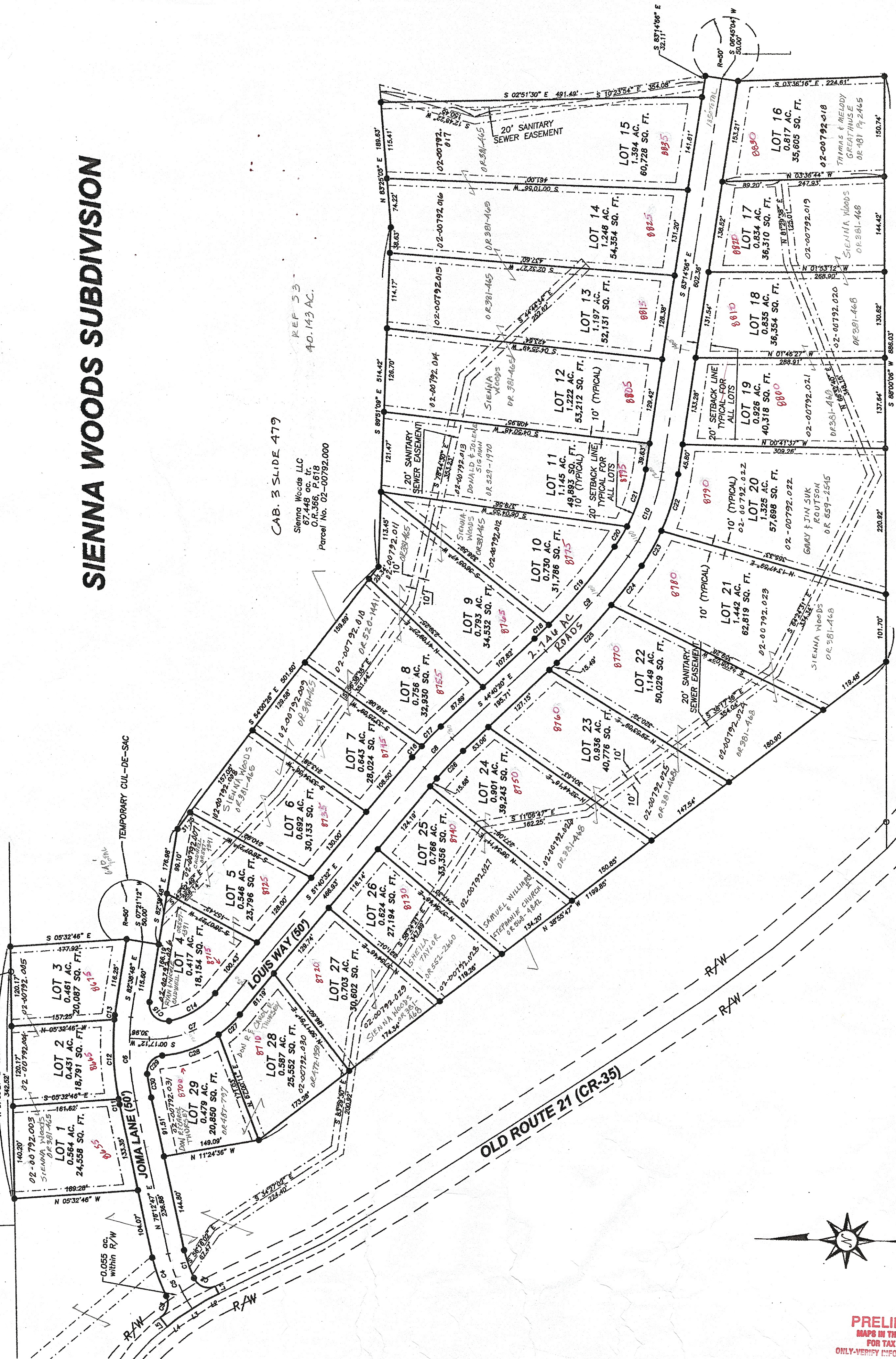
Hoyden E. & Darlene M. Richards  
1.84 ac. tr.  
D.V.357, P.374

James H. & Mary E. Thom  
19.404 ac. tr.  
D.V.365, P.930

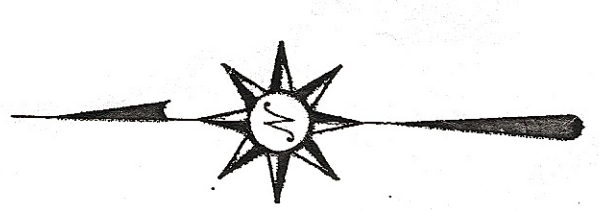
CAB. 3 SLIDE 479

Sienna Woods LLC  
0.446 ac. tr.  
O.R.368, P.618  
Parcel No. 02-00792.000

REF 53  
40.143 AC.



John L. & Martha F. Jamail  
21.28 ac. tr.  
D.V.301, P.731



**PRELIMINARY**  
MAPS IN THIS OFFICE ARE  
FOR TAX PURPOSES  
ONLY-VERIFY INFO. BY DEED RECORDS

<b>DELMAR E. GEORGE</b> County Engineer		<b>MARY ROEDERER</b> cartographer		Revised	Aerial Photo	TAX MAP CAMBRIDGE TOWNSHIP GUERNSEY COUNTY OHIO	Range	Twp
<b>TONY BROWN</b> County Auditor		Drawn					3	2