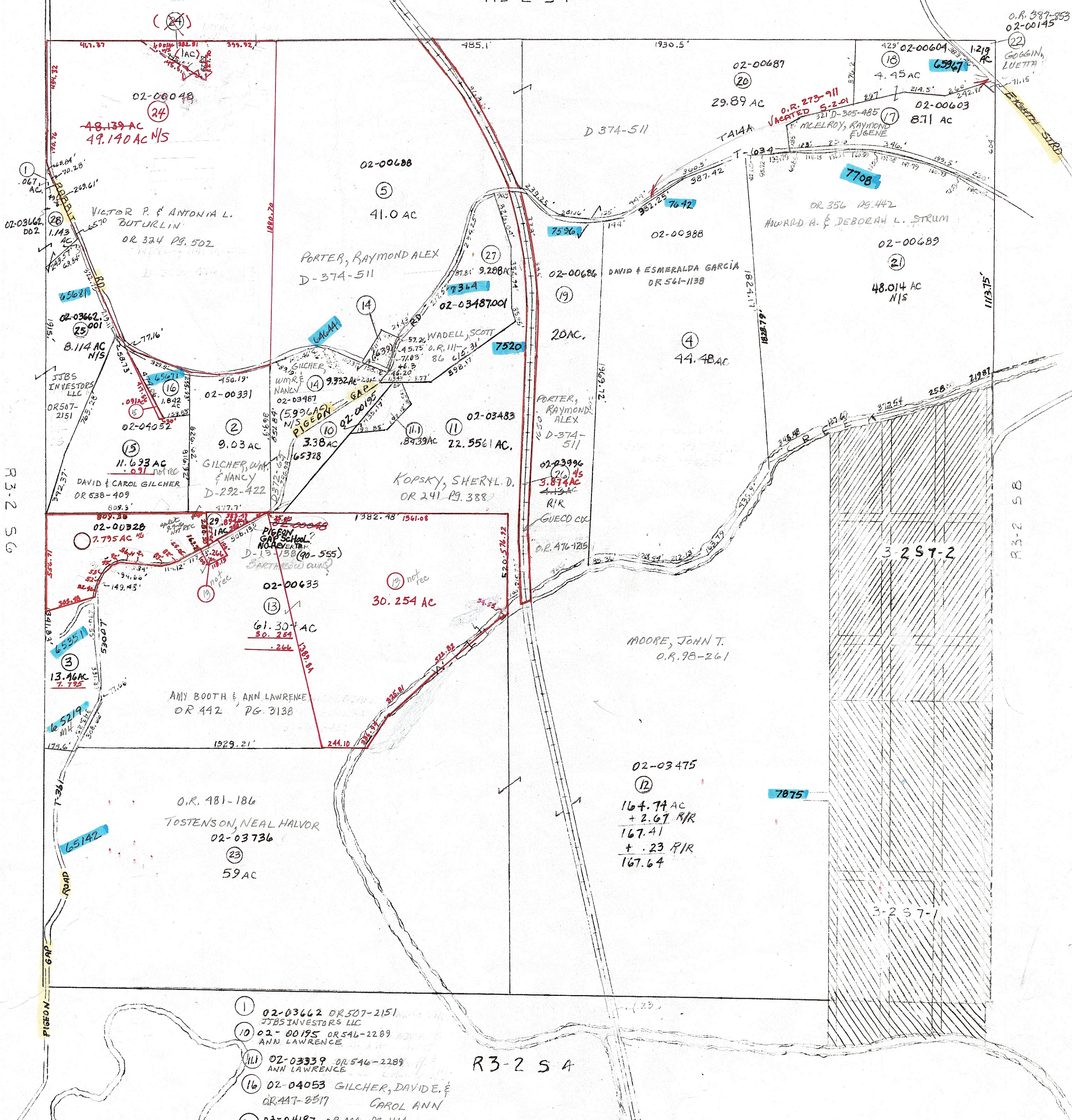


R3-2 S4



R3-2 S6

R3-2 S4

- ① 02-03662 OR 507-2151
JTBS INVESTORS LLC
- ⑩ 02-00195 OR 546-2289
ANN LAWRENCE
- ⑪ 02-03339 OR 546-2289
ANN LAWRENCE
- ⑯ 02-04053 GILCHER, DAVIDE, &
CAROL ANN
- ⑲ 02-04187 OR 444 PS. 116A
NEAL H. TOSTENSON & AMY BOOTH

PRELIMINARY
 MAPS OF THIS OFFICE ARE
 FOR THE PURPOSES
 ONLY-VERIFY INFO. BY DEED RECORDS

Twp 23

DAVID S. GEORGE
 County Engineer

HRK
 cartographer
 Drawn

RMD 3/86
 BMH 10/98

Aerial Photo
 26226
 1986 AERIAL

CAMBRIDGE TAX MAP TOWNSHIP

Range	Twp	
3	2	57