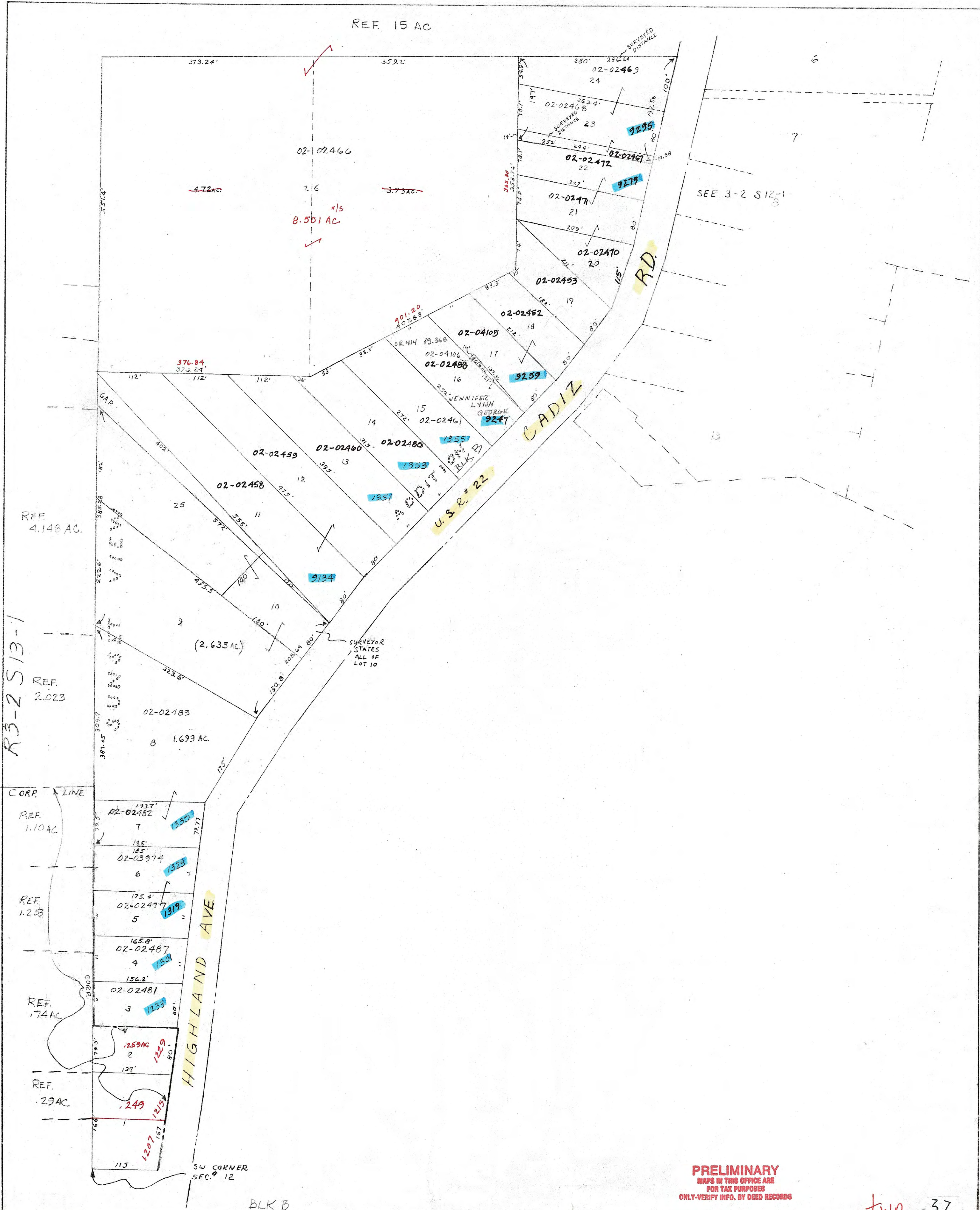


REF. 15 AC.



**PRELIMINARY**  
 MAPS IN THIS OFFICE ARE  
 FOR TAX PURPOSES  
 ONLY-VERIFY INFO. BY DEED RECORDS

*hwp* 37

<p><b>DELMAR E. GEORGE</b>          County Engineer</p> <p><b>TONY BROWN</b>          County Auditor</p>	<p><b>HOWARD R KING</b>          cartographer</p> <p>Drawn</p>	<p>JKM 6-8-87 Revised          MER 2-25-91          BMH 2-25-00</p>	<p>Aerial Photo</p>	<p>TAX MAP  <b>CAMBRIDGE TOWNSHIP</b>          scale 1"=100' GUERNSEY COUNTY OHIO</p>	<table border="1"> <tr> <td>Range</td> <td>Twp</td> </tr> <tr> <td>3</td> <td>2 S12-2</td> </tr> </table>	Range	Twp	3	2 S12-2
Range	Twp								
3	2 S12-2								