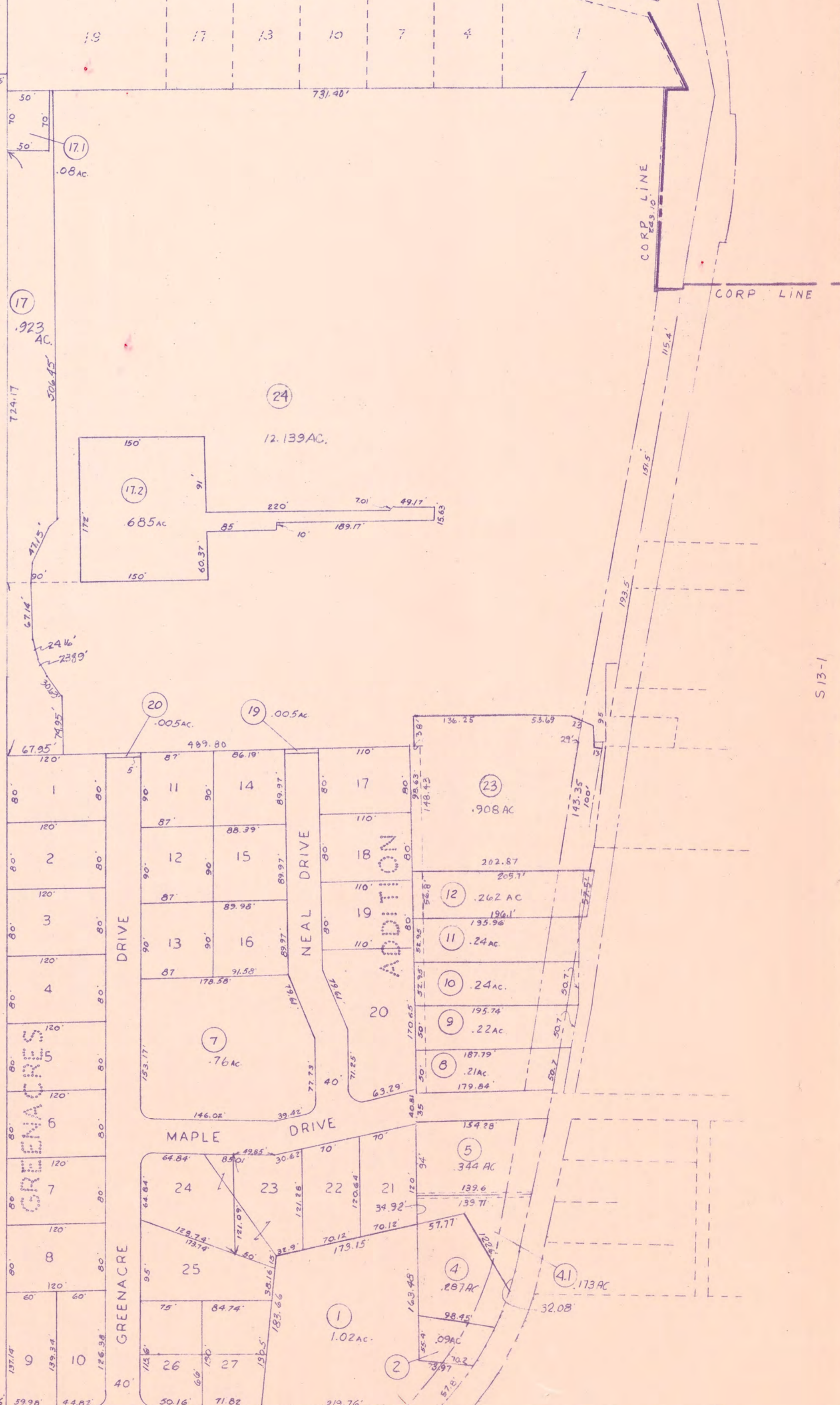
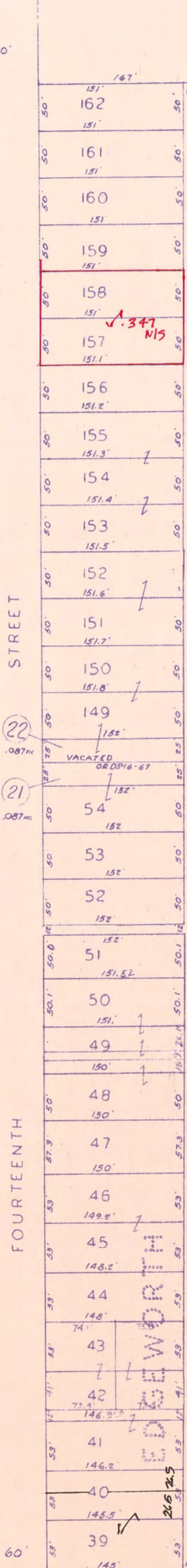
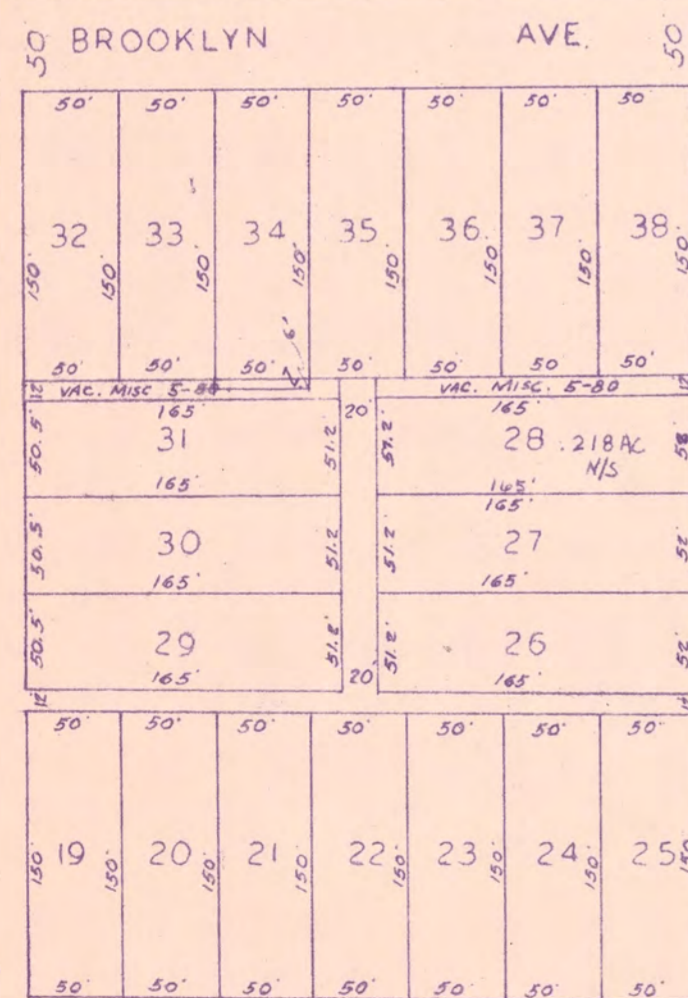
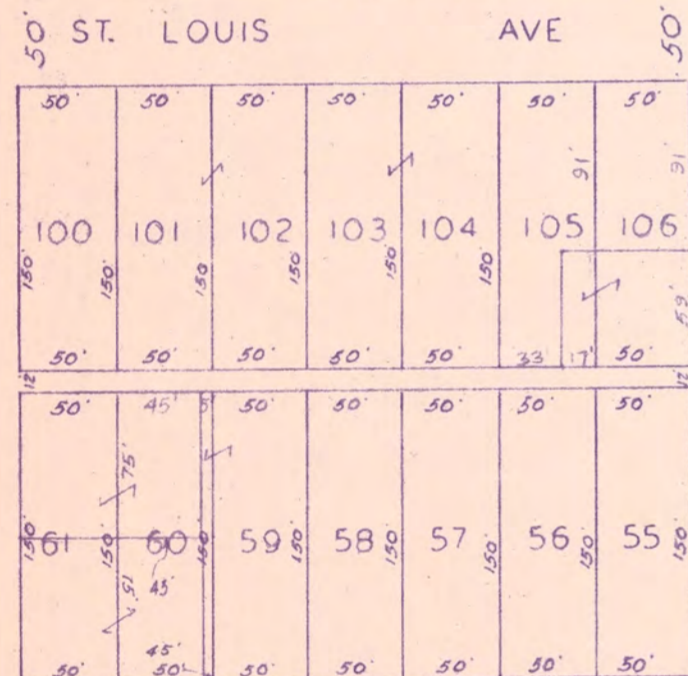
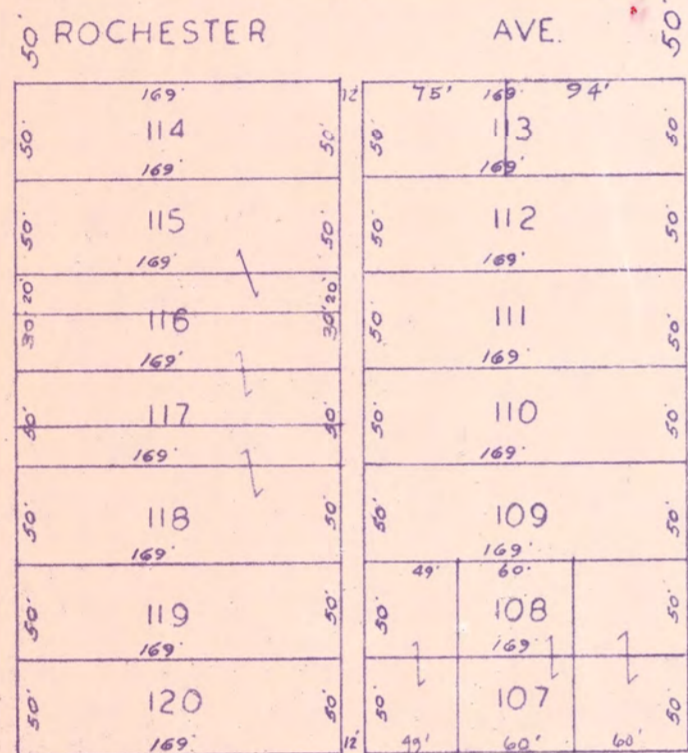
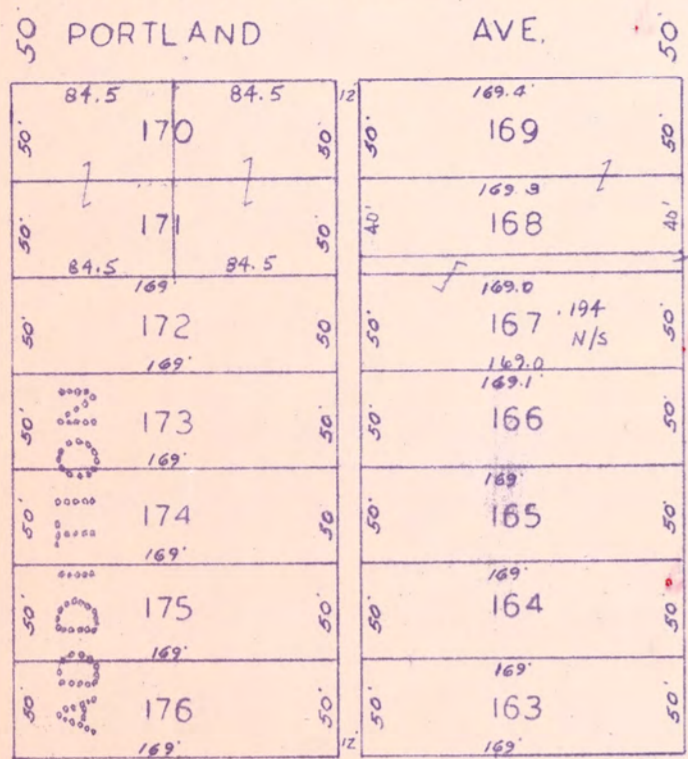


HILLCREST

ADD



SEE 3-2 \$13-3

THIRTEENTH

FOURTEENTH

MAPS IN THIS OFFICE ARE FOR TAX PURPOSES ONLY - VERIFY INFO. BY DEED RECORDS L. PATTERSON - CO. AUDITOR T. PARNELL - CO. ENGINEER

**PRELIMINARY**

LLOYD A BROCKWELL co engineer LEONARD PATTERSON co auditor

HOWARD R KING cartographer DENNIS L KING Drawn

Revised APRIL 26, 1974 APRIL 8, 1976

Aerial Photo

TAX MAP CAMBRIDGE CORP - CAMBRIDGE TWP. GUERNSEY COUNTY OHIO JUNE 1974

Range 3 Twp 2 S13-2