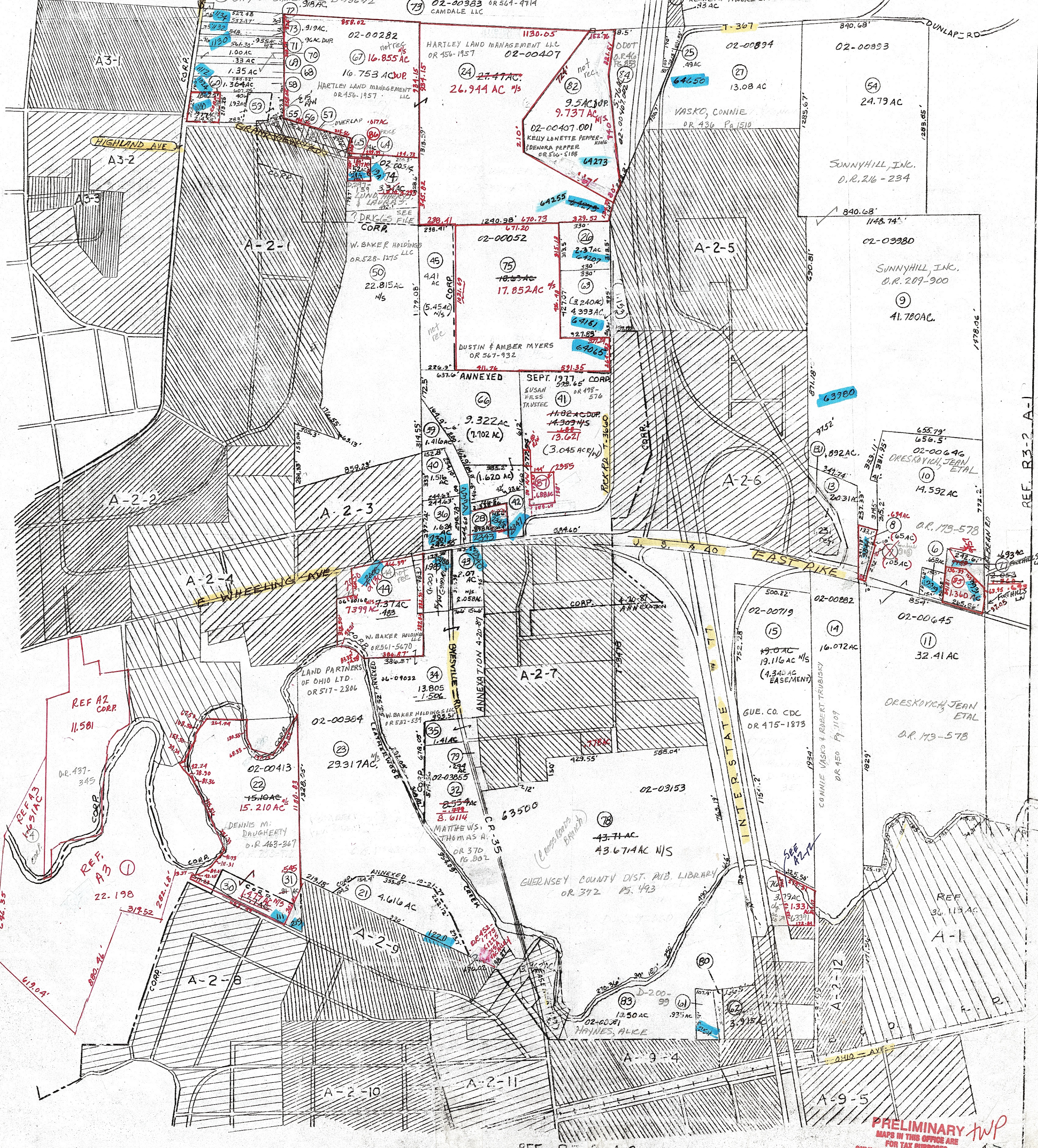


- 6 02-00864 OR 546-3168 MS VENTURES LTD
- 7 02-00395 OR 208-288 HILLSIDE L. CORP W/ SUPERIOR CONSTRUCTION SERVICES
- 8 02-00396 OR 513-297 SUPERIOR CONSTRUCTION SERVICES
- 13 02-03270 O.R. 540-1206 JOEY BERGER
- 02-03271 O.R. 178-120
- 31 02-00422 - D-296-420 BAKER, W.M.L. & NANCY A.
- 25 JACKMAN, DONALD L. & VIRGINIA
- 26 02-00873 - OR 537-772 TILTON, AUDREY
- 35 02-00847 - O.R. 59-30 COULTER, MICHAEL W. & CONNIE L.
- 58 02-00106 - O.R. 78-57 HOFFMAN, JOHN C.
- 60 02-00150 OR 300 PG. 723 V.A. CHEMICALS, INC. ANNEXED
- 61 02-00852 - D 373-32 SUNNA FRANK, JOAN R.
- 63 02-03735 OR 569-137 LARRY & MARION GIBSON
- 59 CITY OF CAMBRIDGE D-156-12
- 72 02-00193 OR 514-1207 KENNETH MOORE JR.
- 64 02-00405 - D-275-388 HOFFMAN, JOHN B.
- 68 02-00406 - D-275-388 HOFFMAN, JOHN B.
- 69 02-00404 D-275-388 HOFFMAN, JOHN B.
- 70 02-00695 - O.R. 242-351 OGLE, W. DAVID TRUSTEES FOR ORENDA TRUST
- 71 02-00187 - O.R. 99-488 OGLE, W. DAVID TRUSTEES FOR ORENDA TRUST
- 72 02-00383 OR 564-414 CAMDALE LLC
- 76 02-00395 - O.R. 494-2550 LATHAN, JAN J.
- 71 02-03981 - D-353-402 NATIONAL CAMBRIDGE COLLECTORS INC.
- 79 02-03856 - O.R. 556-3191 LISA PORTER
- 80 02-03553 - D-373-32 SUNNAFRANK, JOHN R.
- 82 02-00467.061 OR 546-5188 KELLY PEPPER-KING & DENORA PEPPER
- 06-08245 OR 558-3836 LKS HOLDINGS LLC



REF. R3-2 A3

REF. R3-2 A-1

PRELIMINARY TWP
MAPS IN THIS OFFICE ARE
FOR TAX PURPOSES
ONLY-VERIFY INFO. BY DEED RECORDS