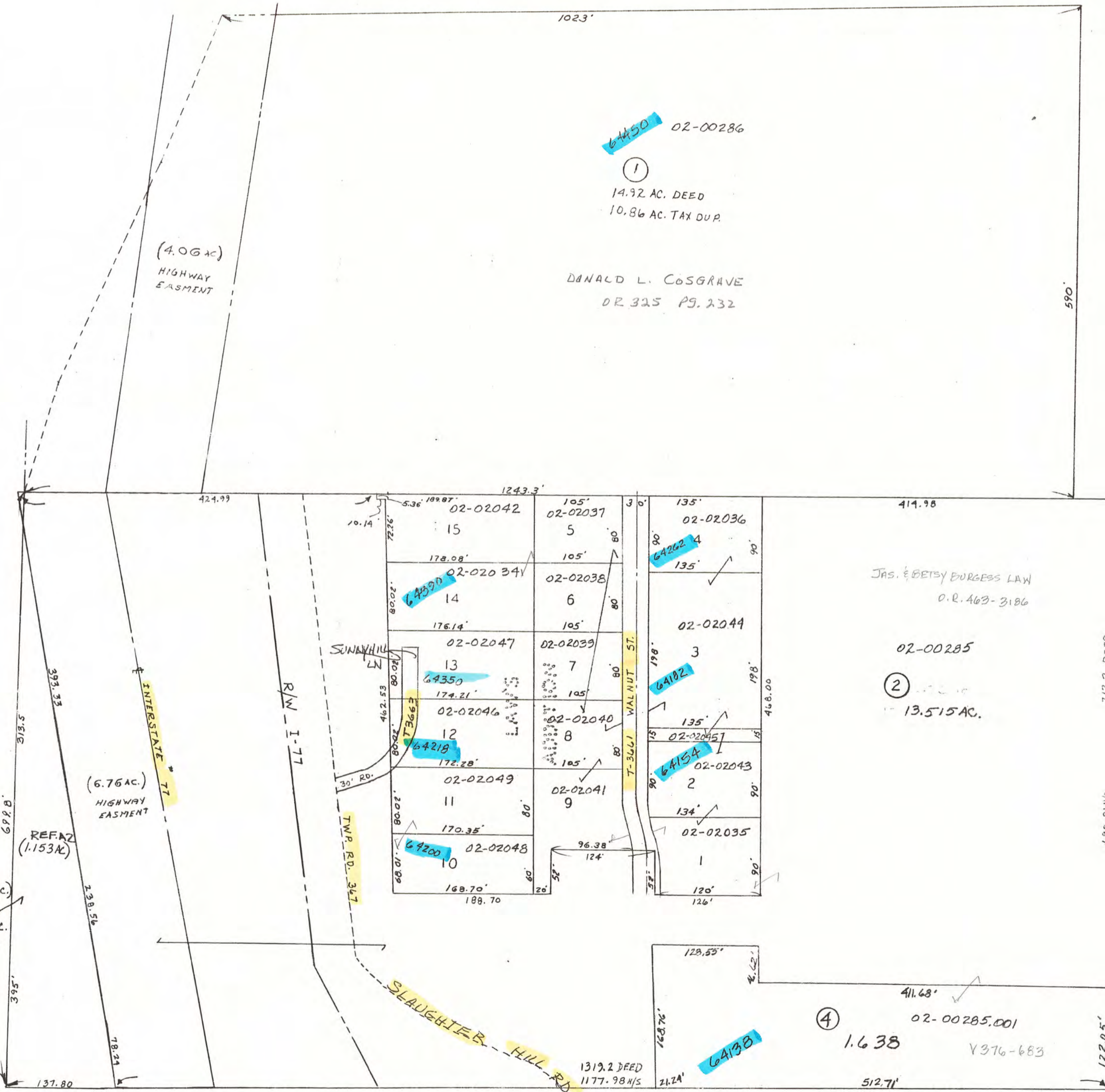


A 2

A 2

A 2



A 2-6

49

LEWIS EDWARD TIPTON  
GUERNSEY COUNTY AUDITOR

AERIAL PHOTO 3-G-13

TAX MAP

CAMBRIDGE TWP

SHEET NO.

DRAWN  
HOWARD R. KING

REVISED  
BY *BMH*  
DATE  
4-2000



GUERNSEY COUNTY OHIO

RANGE	TWP.	SHEET NO.
3	2	A2-5