

A2-8

A3

A8

CAMBRIDGE GLASS
REF 15.00 AC

REF 5.00 AC

REF 15 AC

REF 724 AC

REF 11.205 AC

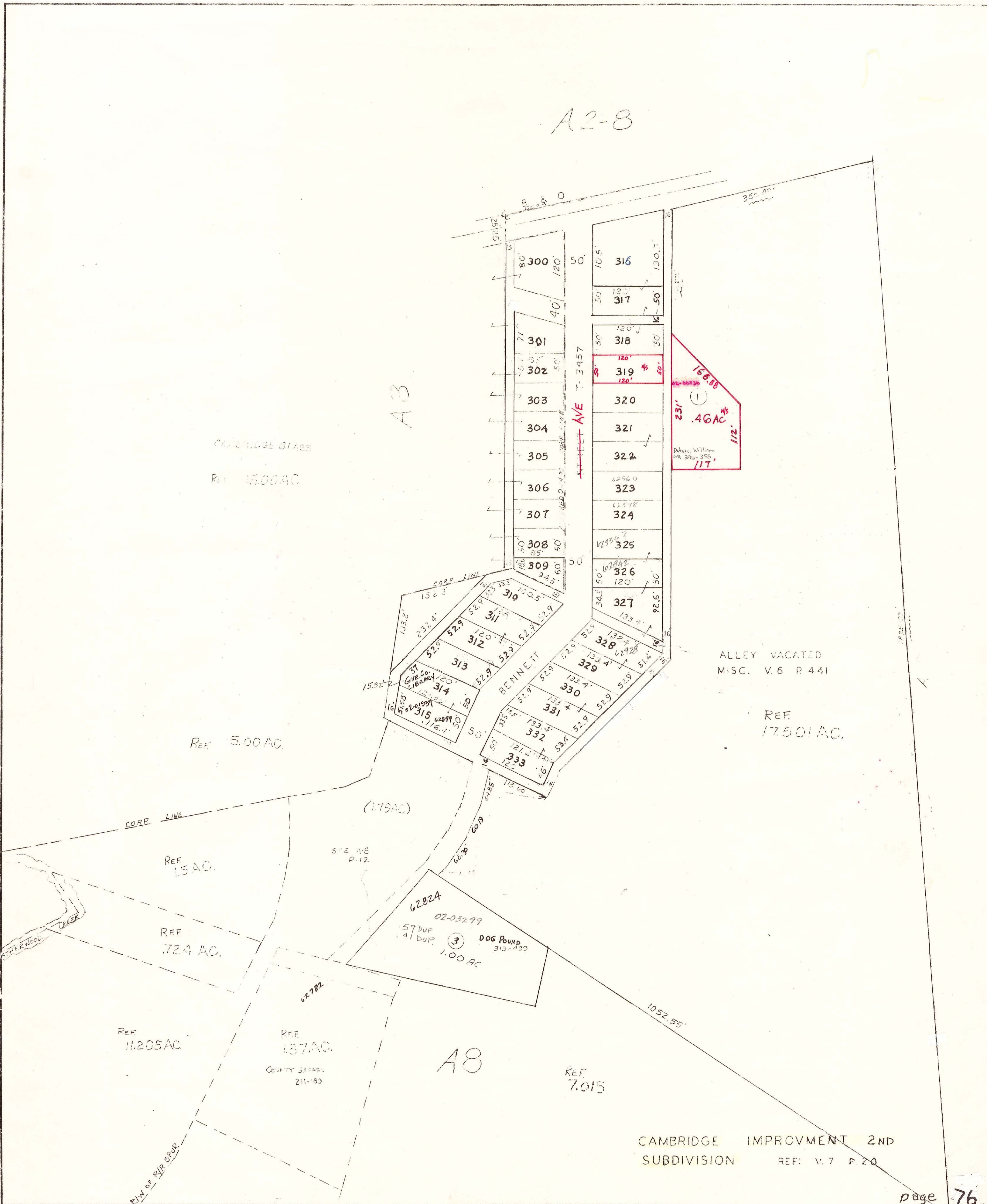
REF 187 AC
COUNTY SALES
211-183

REF 7.015

ALLEY VACATED
MISC. V.6 P.441

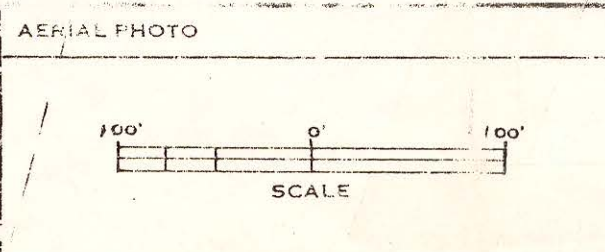
REF 17.501 AC

CAMBRIDGE IMPROVMENT 2ND
SUBDIVISION REF: V.7 P.20



LEWIS EDWARD TIPTON
GUERNSEY COUNTY AUDITOR

DRAWN BY HOWARD R. KING
REVISED BY MER
DATE 1959



TAX MAP

CAMBRIDGE TWP

GUERNSEY COUNTY OHIO

RANGE	TWP	SECTION
3	2	A8-5