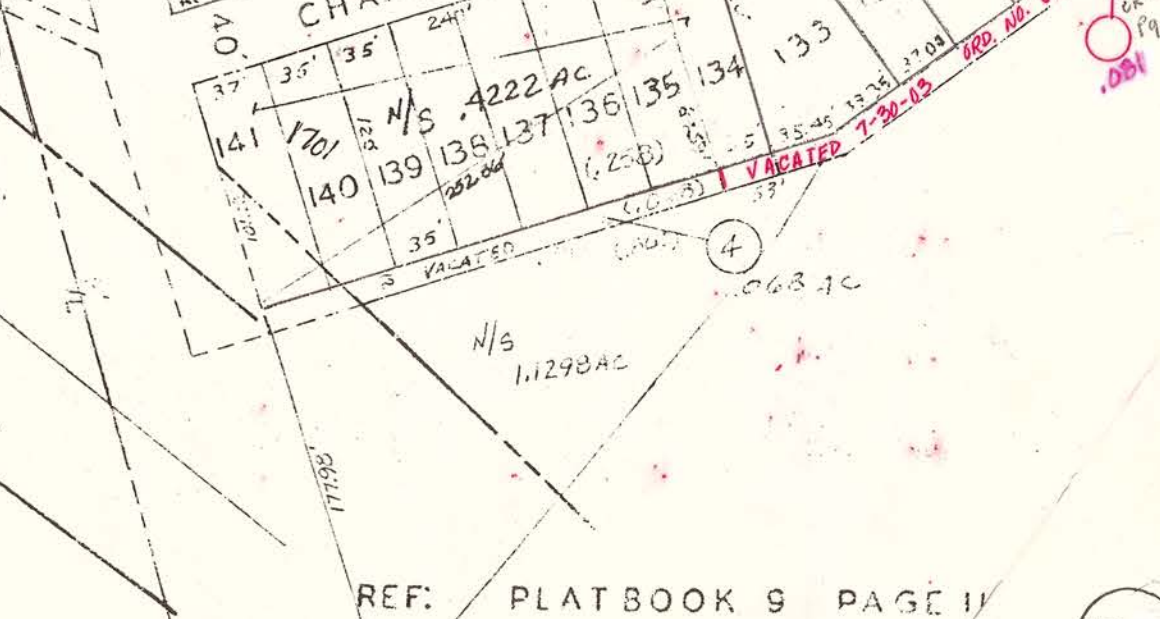
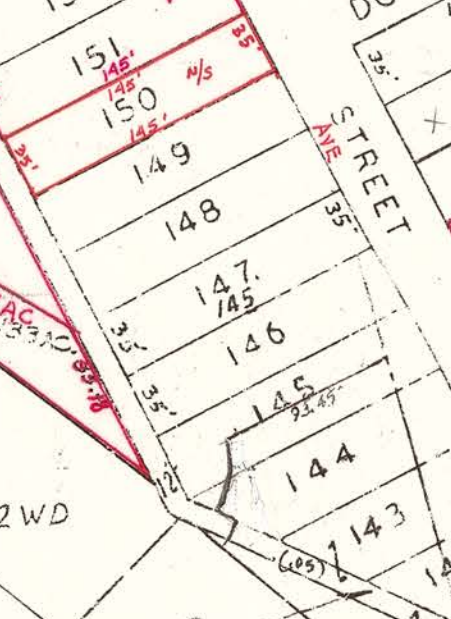
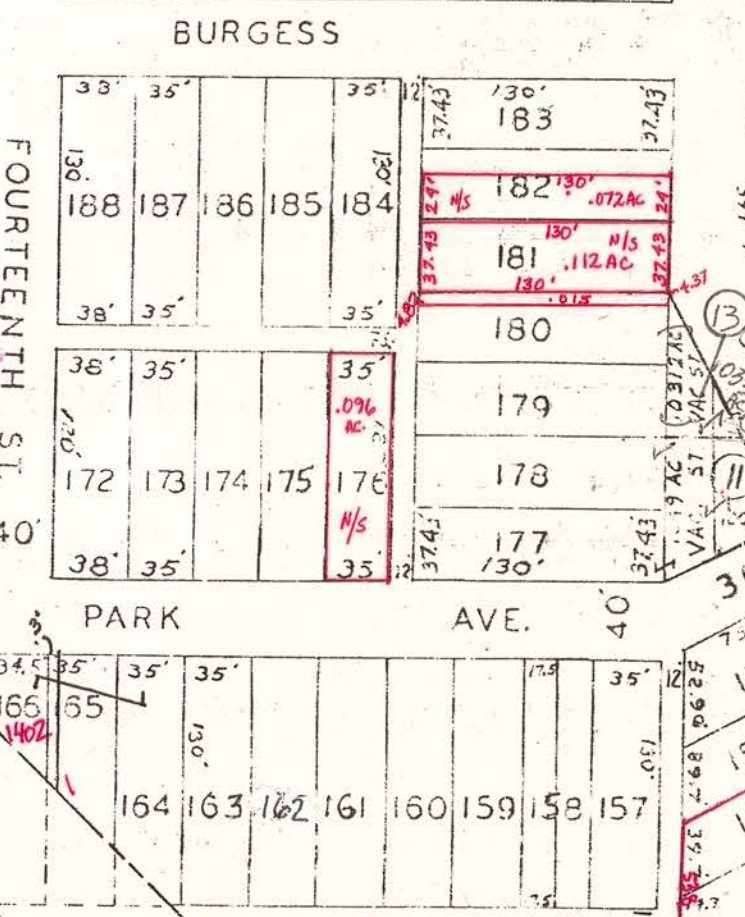
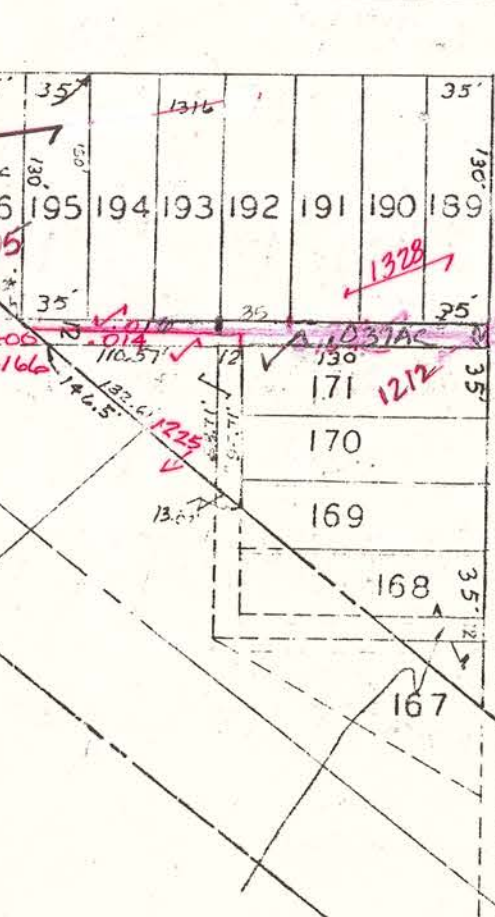
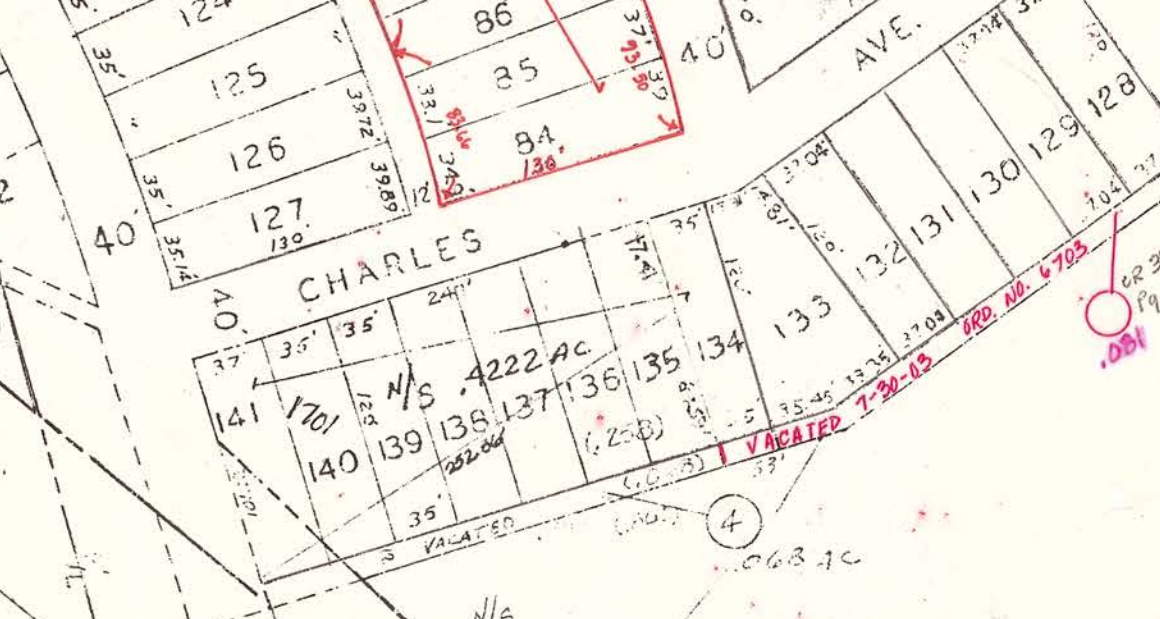
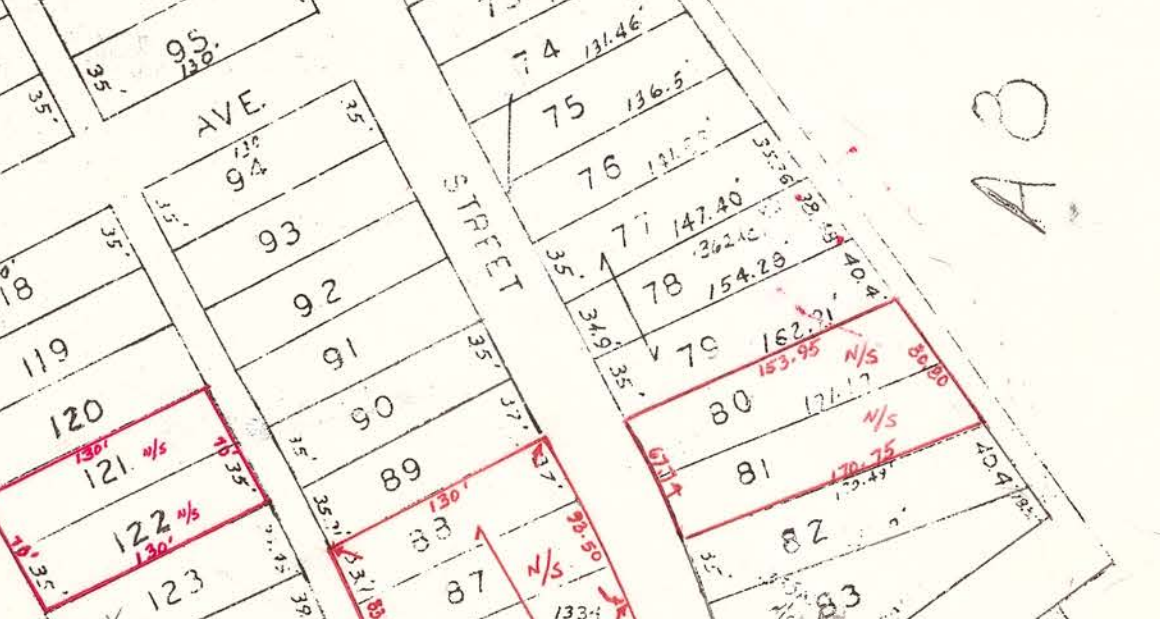
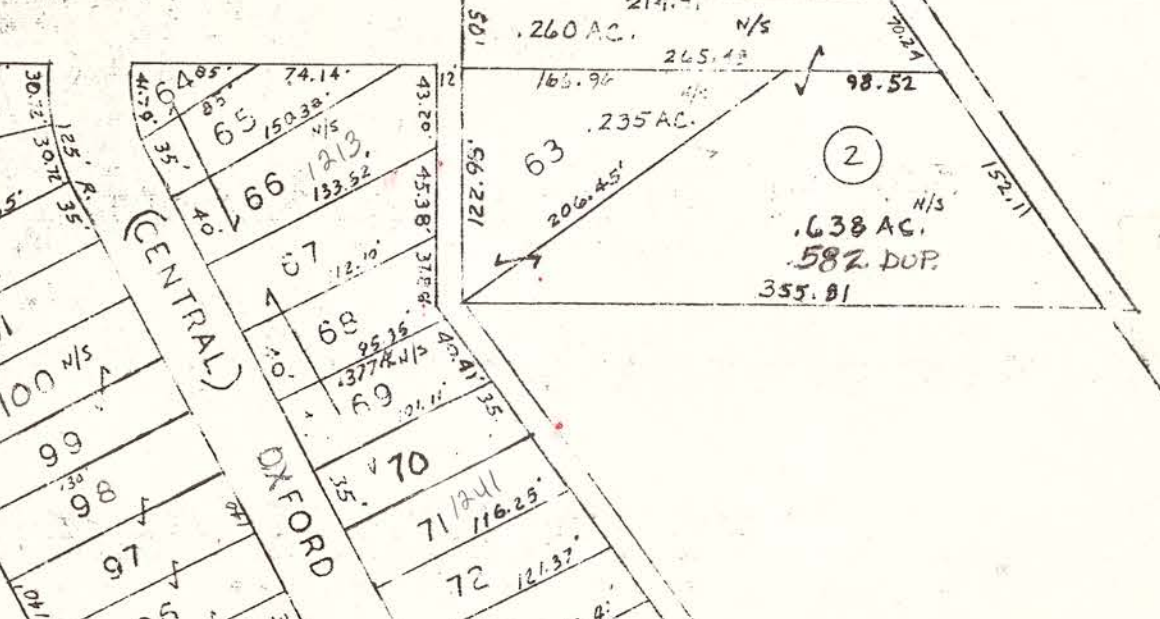
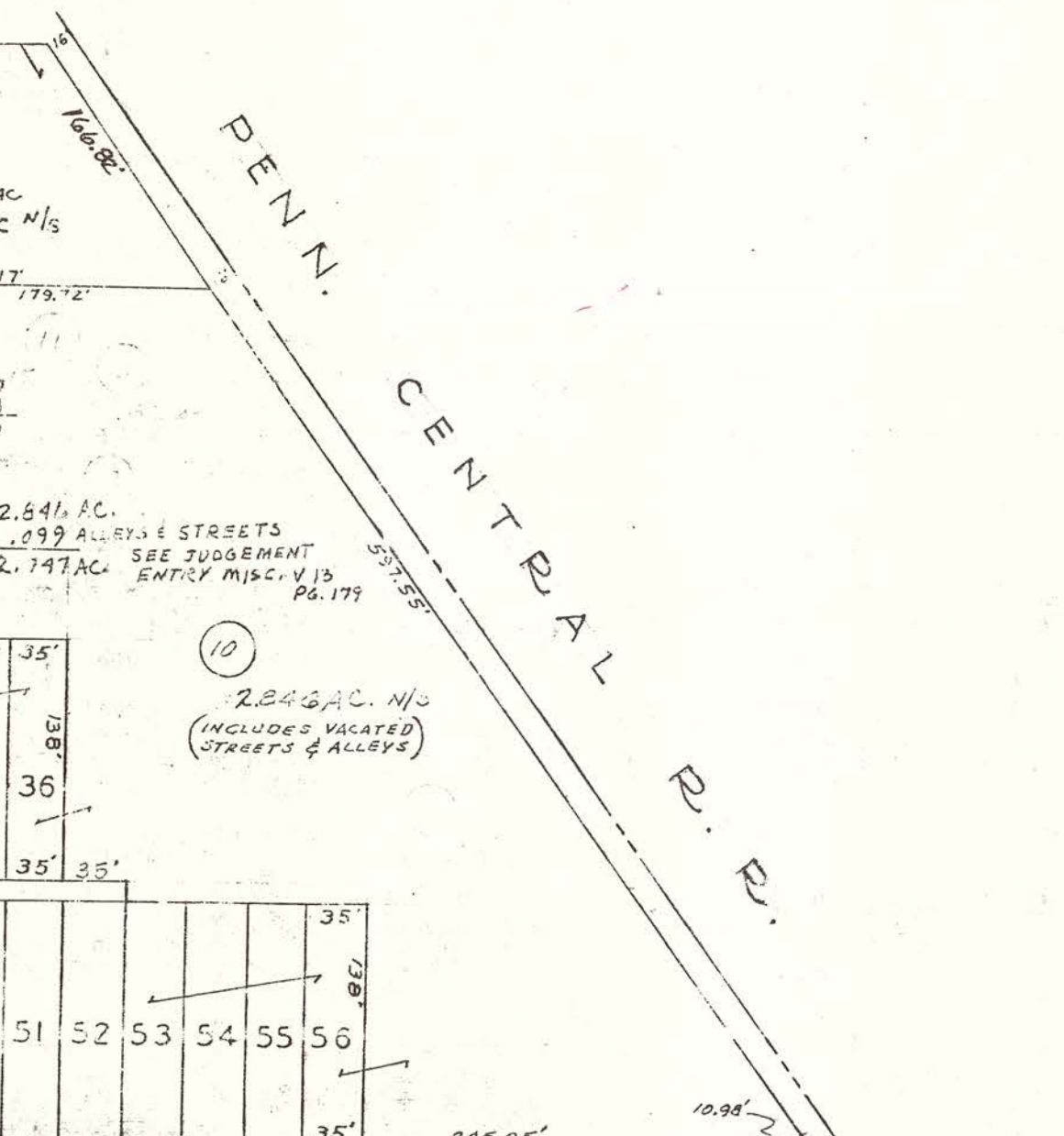
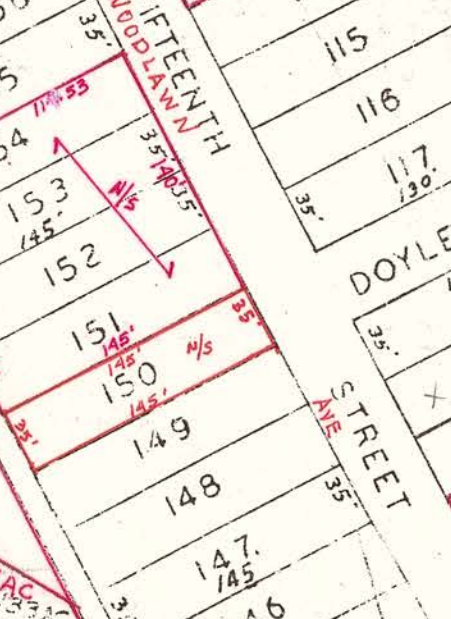
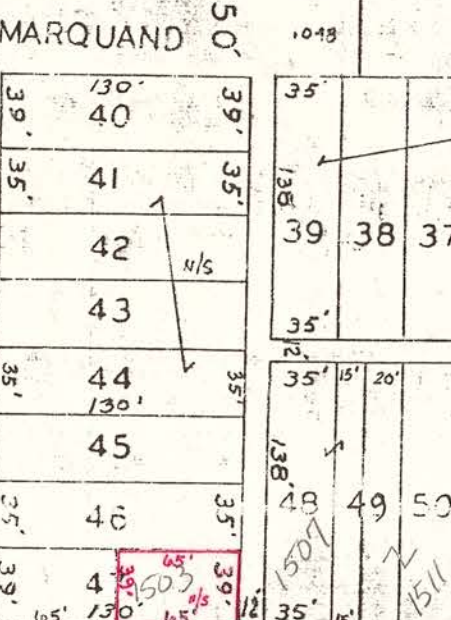
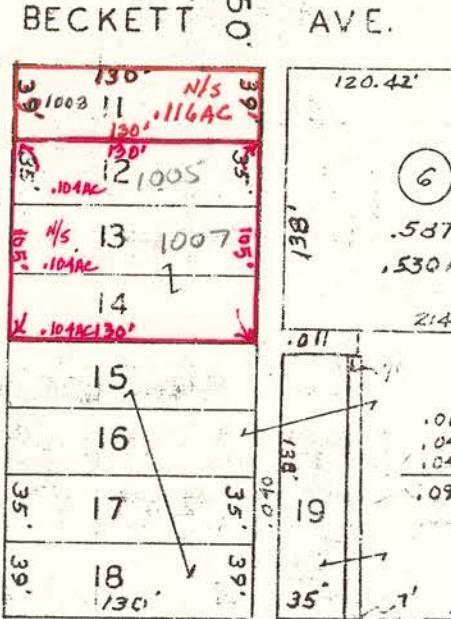
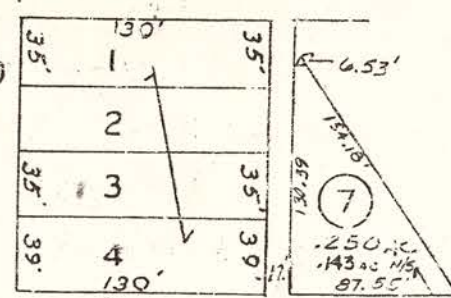


A8-2

FAIRGROUNDS

ADDITION



ALLEYS VACATED
MISC. V.7 P.892 & 893

ALLEY VACATED
MISC. V.6 P.337

A8

A8

WOODLAWN ADDITION

REF: PLATBOOK 9 PAGE 11

LEWIS EDWARD TIPTON
GUERNSEY COUNTY AUDITOR

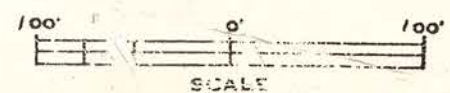
AERIAL PHOTO 2-6-22

TAX MAP

CAMBRIDGE CORP.

CORP 73

DRAWN	REVISED
HOWARD R. KING	DATE
	1994
	1995



SHEET NO.	
RANGE	TWP.
3	2
A8-1	

GUERNSEY COUNTY OHIO