

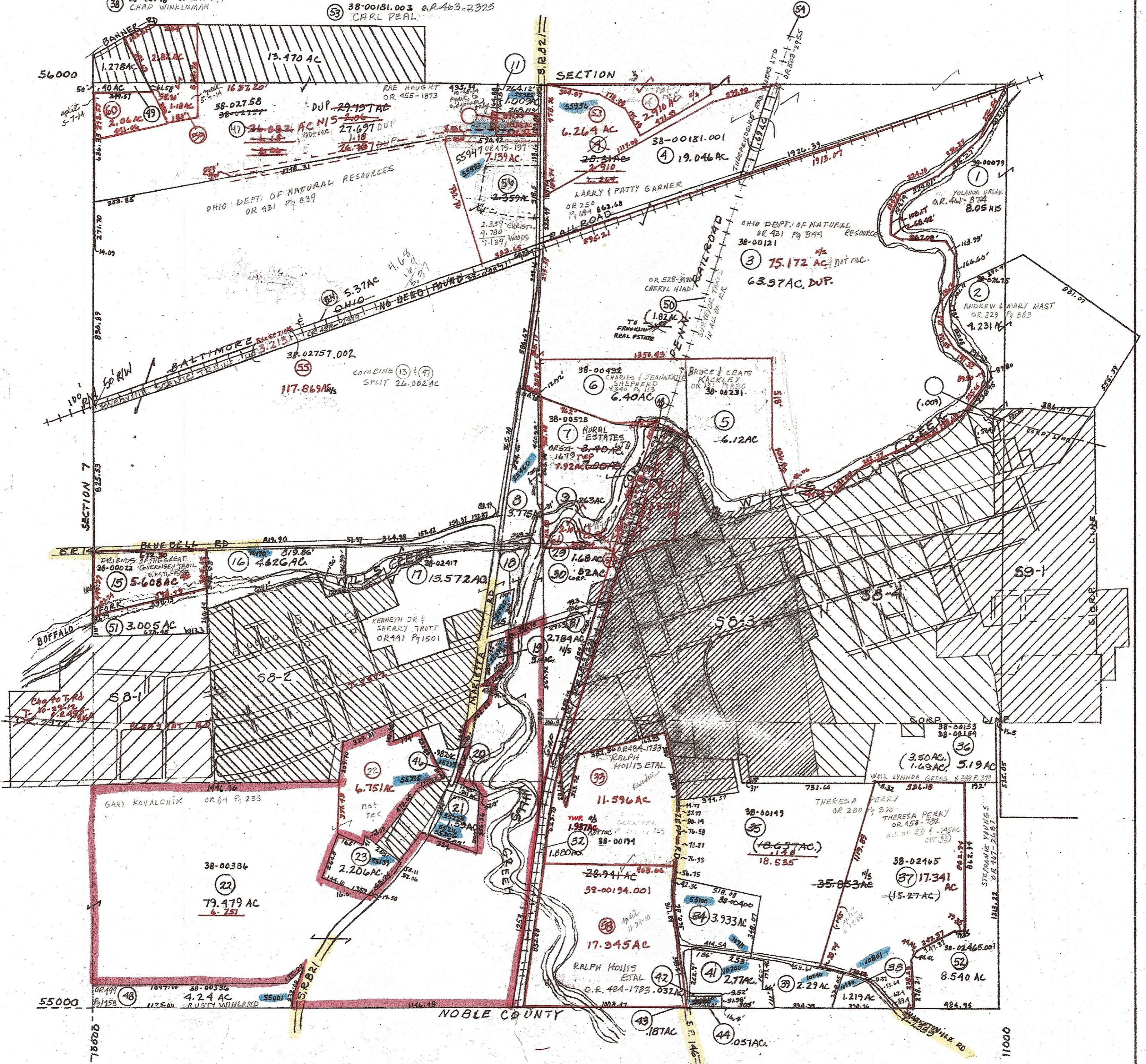
- V. 327 P. 175
- 8 9 VILLAGE OF PLEASANT CITY
- 11 38-02242 OR 470 Pg 422
FRANK & HAZEL AYERS
- 16 38-00118 OR 492-2967
VERONICA NORMAN
- 18 38-00347 OR 422 Pg 484
ROGER WHITED
- 19 38-02195 OR 492-1034
DAVID WILSON & MICHELE THOMPSON
- 21 20 38-02453 OR 464-1043
KATHLEEN WOLTERS
- 23 38-02735 OR 469-2061
ROY G. & CARLA R. GROVES
- 28 38-02679 OR 279 Pg 883
ANDREW & MARY MAST
- 32 38-02720 OR 271 Pg 359
DALE & MARTHA KROPE
- 34 38-00400 OR 400 Pg 893
MELODY SUE EVANCHO
- 36 38-00148 OR 246 Pg 1
CHAD WINKLEMAN
- 39 38-00061 OR 490-2763
CHAD WINKLEMAN
- 41 38-00047 OR 501-2378
CHAD WINKLEMAN
- 42 38-02495 OR 501-1908
PATSY GEIBEL
- 43 38-00477 OR 501-1908
PATSY GEIBEL
- 44 38-02494 OR 501-1908
PATSY GEIBEL
- 46 38-00389 OR 441 Pg 214
DREW WHEELER
- 47 38-02758 OR 433 Pg 118
CHARLES & RAE HAUGHT
- 49 38-02757.001 OR 71 Pg 678
JERRY & DIANE HAUGHT
- 50 38-02721 OR 170 Pg 159
CHARLES & RAE HAUGHT
- 51 38-00022.001 OR 244 Pg 839
DANIEL & ROCHELLE RUSNAK
- 53 38-00181.003 OR 463-2325
CARL PEAL

PLEASANT CITY CORP.

- 27 39-00039 OR 302 Pg 726
JAMES PATRICK & PAMELA WILLIS
- 28 39-00379 OR 528-3480
C. CHERYL HAD ETAL
- 29 39-00034 NOT RECORDED
MALINDA HOGG
- 30 39-00033 NOT RECORDED
MALINDA HOGG
- 31 39-00378 OR 48 Pg 945
VILLAGE OF PLEASANT CITY
- 57 39-00379.001 OR 448-2346
WILLIE & DRUSILLA K. PAULSEN
- 61 39-00039.001 OR 545-899
ZUERCHERBUSH LTD.

TWP

- 59 38-02758.002 OR 518-659
ROBERT L. HAUGHT
- 60 38-02758.003 OR 518-661
JERRY D. & DIANE HAUGHT



PRELIMINARY
MAPS IN THIS OFFICE ARE
FOR TAX PURPOSES
ONLY-VERIFY INFO. BY DEED RECORDS

Village 1 CORP.

<p>DELMAR E. GEORGE County Engineer</p> <p>TONY BROWN County Auditor</p>	<p>HOWARD R. KING cartographer B M F</p> <p>Drawn 2-52</p>	<p>Revised</p> <p>MER 11/85</p> <p>MER 1/03</p>	<p>Aerial Photo</p> <p>3GG5</p> <p>1/2" = 400' scale</p>	<p>TAX MAP</p> <p>VALLEY TWP & PLEASANT CITY CORP.</p> <p>GUERNSEY COUNTY OHIO</p>	<p>Range</p> <p>9 8 58</p>	<p>Twp</p> <p>9 8 58</p>
----------------------------------------------------------------------------------	--------------------------------------------------------------------	-------------------------------------------------	--------------------------------------------------------------	----------------------------------------------------------------------------------------	----------------------------	--------------------------