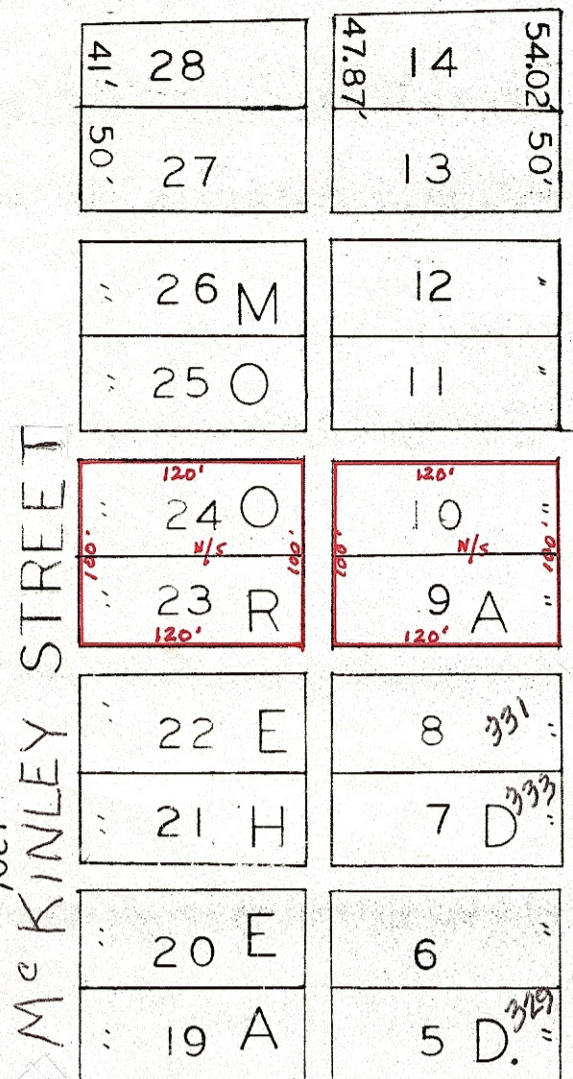
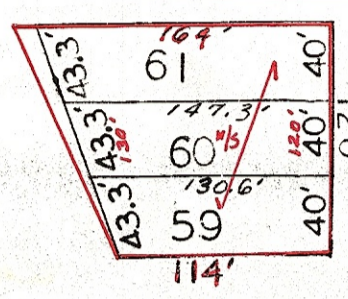
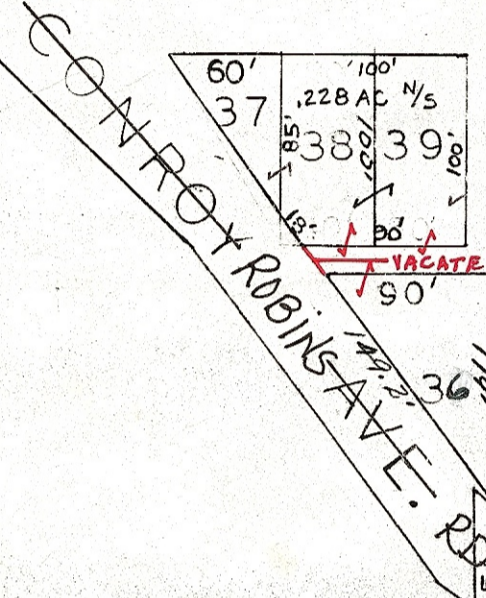


③ 7.358 AC  
 6.5 AC AVD.  
 7.00 AC DEED

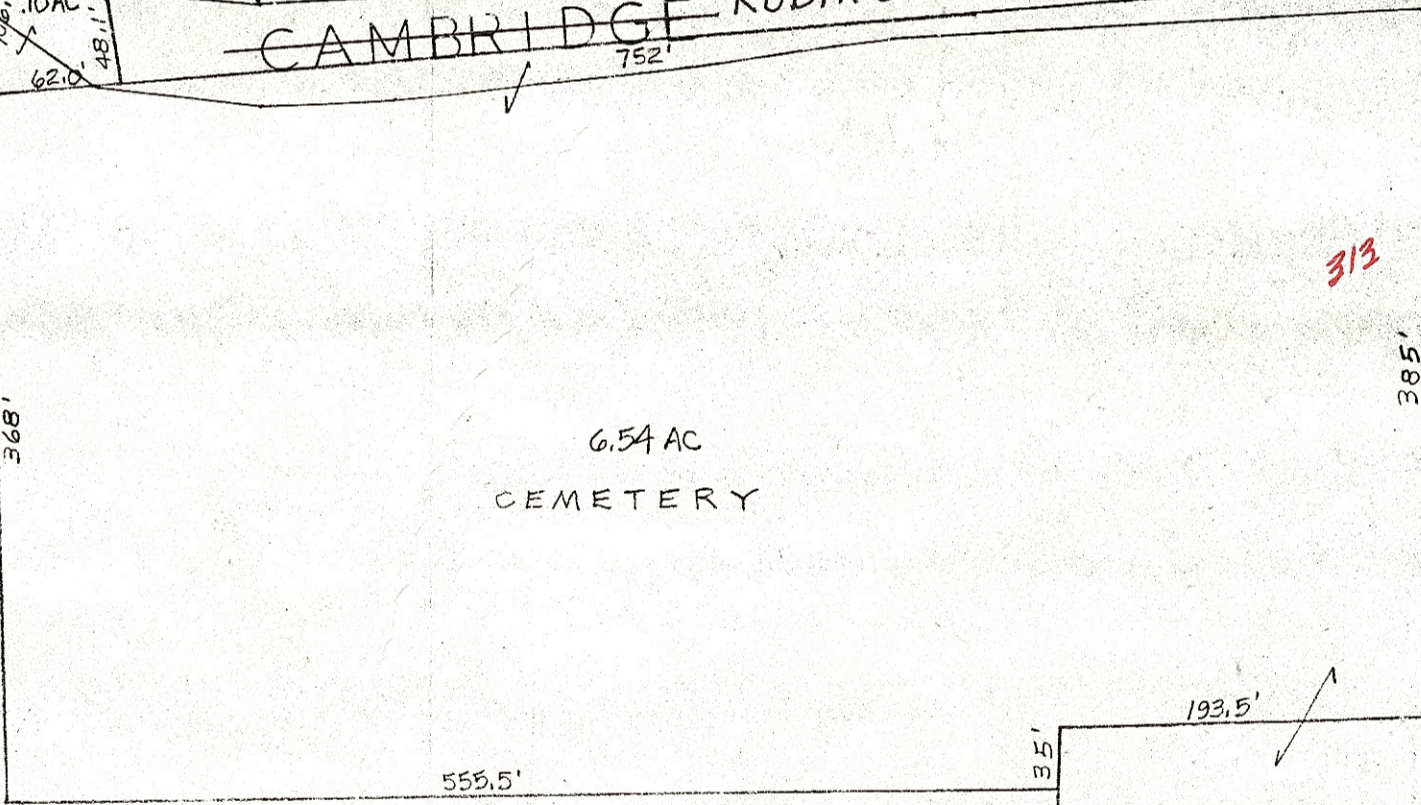


MAPLE ST.

GREGG ST.

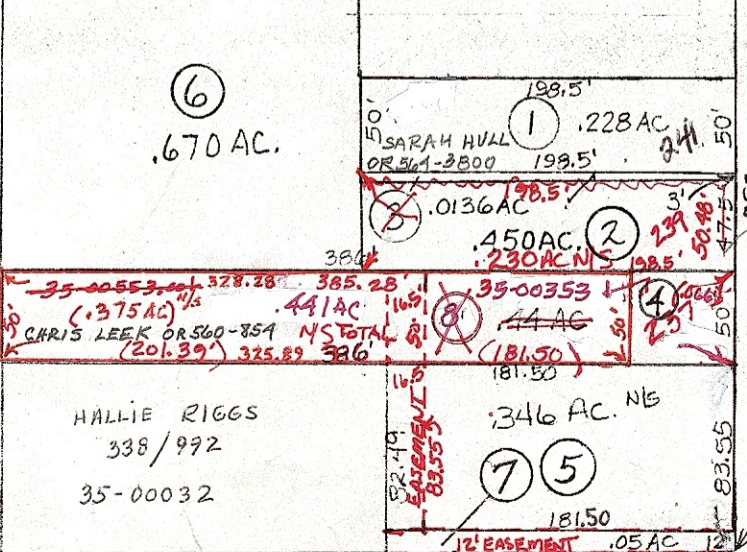


CAMBRIDGE ROBINS ROAD RD.



HIGH OHIO 285 STREET

SEC. 19  
 SEC. 22



**PRELIMINARY**

MAPS IN THIS OFFICE ARE FOR TAX PURPOSES ONLY - VERIFY INFO. BY DEED RECORDS T. BROWN - CO.

Village ③

MOOREHEAD ADD PLAT BK-6 PAGE-43

SLIDE # 146

MOOREHEADS

<b>LEWIS EDWARD TIPTON</b> GUERNSEY COUNTY AUDITOR		AERIAL PHOTO 		<b>TAX MAP</b> SENECAVILLE CORP.-RICHLAND TWP. GUERNSEY COUNTY OHIO			SHEET NO. RANGE TWP.		
DRAWN <b>HOWARD R. KING</b>	BY	REVISED DATE 6-25-70				2	1	S19-1	

FILE 19-1-CARDS FILE-SURVEYS. 827