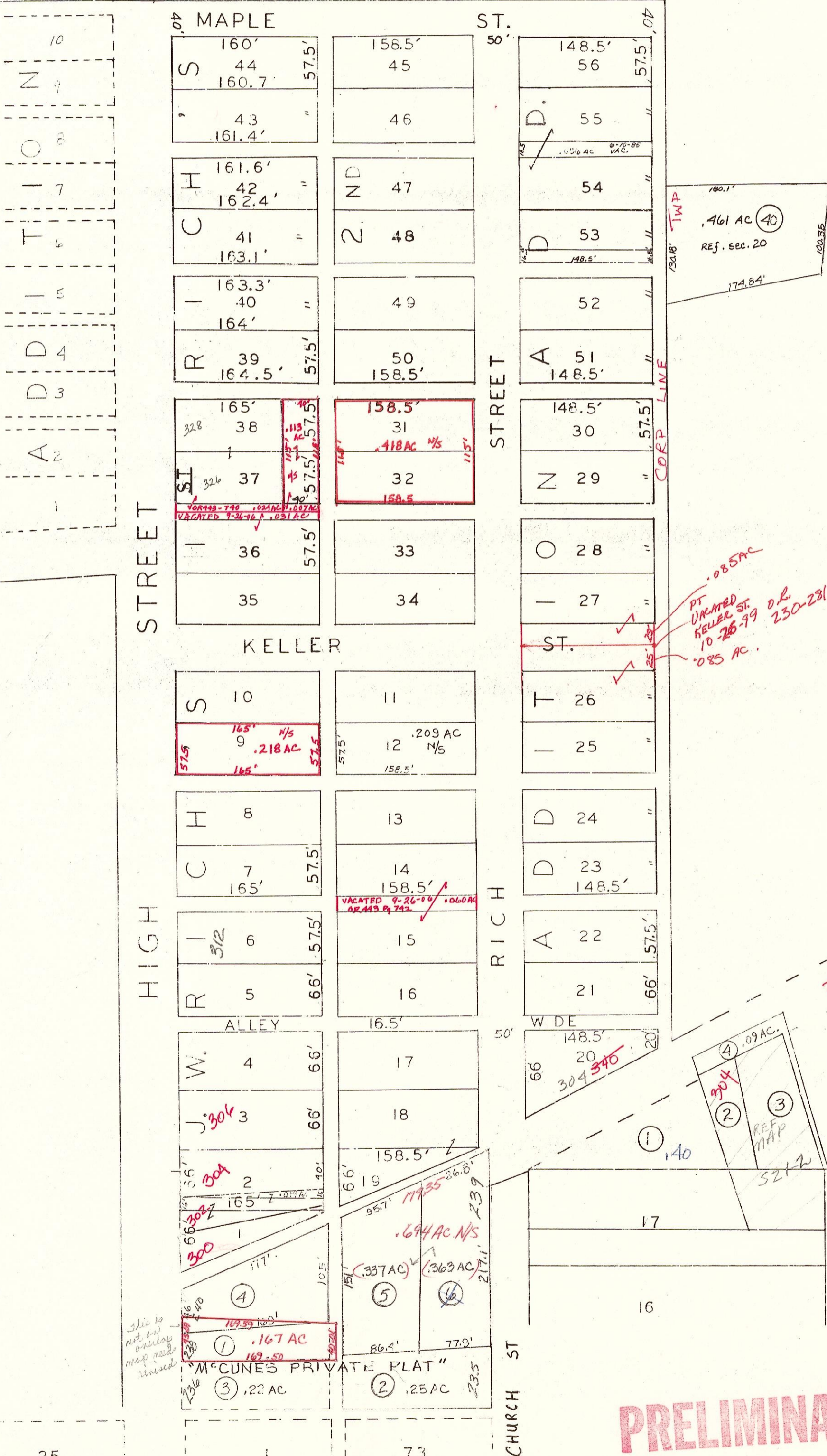


MOOREHEAD'S



RIGBY RD

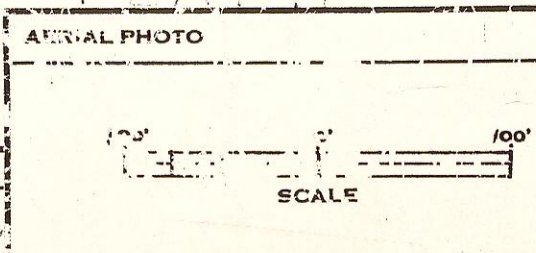
R2-TI-S20  
R2-TI-S21

MAPS IN THIS OFFICE ARE FOR TAX PURPOSES ONLY - VERIFY INFO. BY DEED RECORDS  
T. BROWN - CO AUDITOR  
T. PARNELL - CO. ENGINEER

**PRELIMINARY**

JW RICH'S 1<sup>ST</sup> PLAT PK. PG.  
JW RICH'S 2<sup>ND</sup> 6 42  
7 57

49 25 ORIGINAL PLAT



LEWIS EDWARD TIPTON  
GUERNSEY COUNTY AUDITOR

TAX MAP  
SENECAVILLE CORP-RICHLAND TWP.

SHEET NO.	
RANGE	TWP.
2	1 S20-1

DRAWN BY: HOWARD R. KING  
REVISED DATE: 6-25-70

GUERNSEY COUNTY OHIO