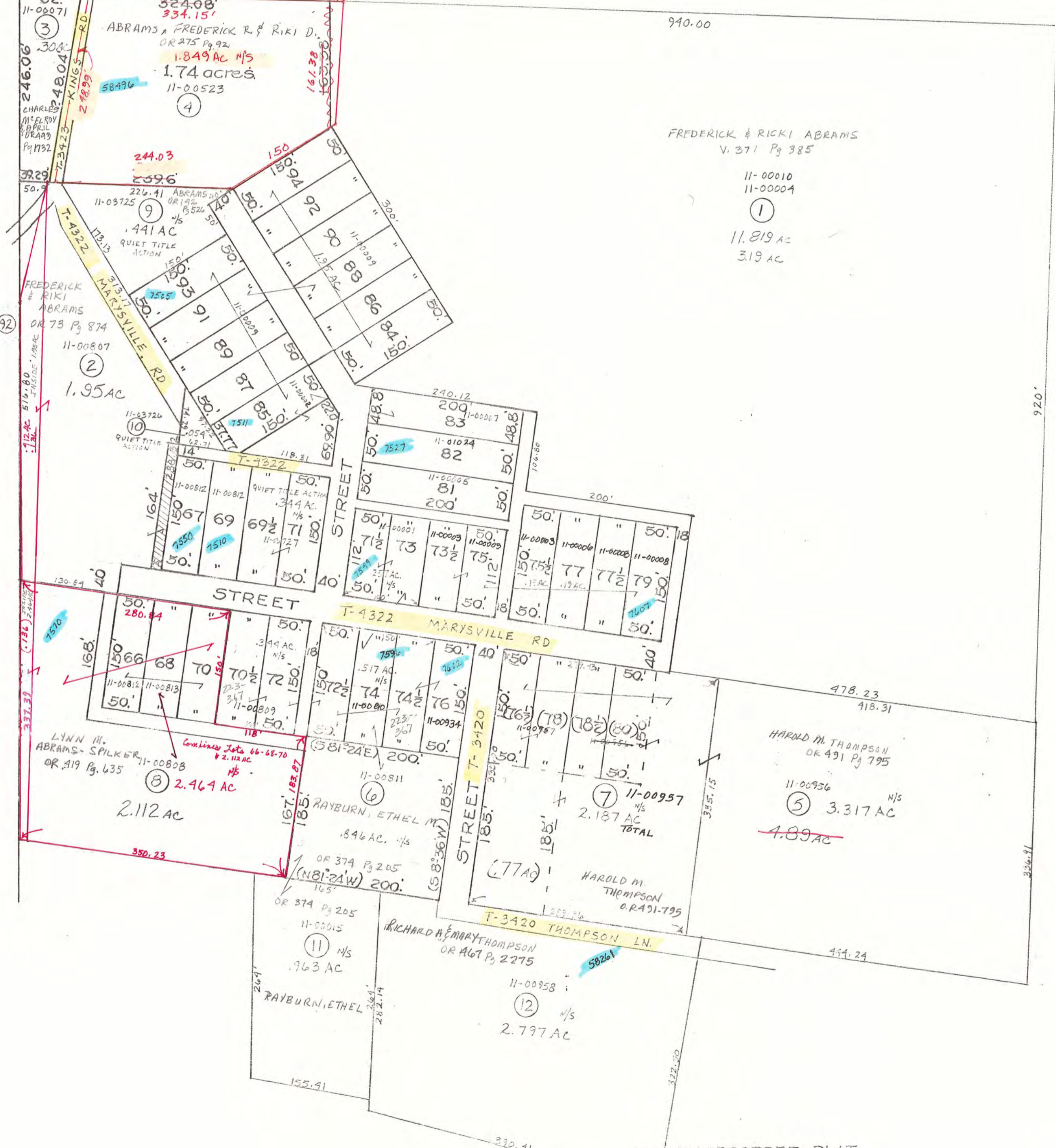


N.W. COR. OF SE/4 SECT. 17.



FREDERICK & RICKI ABRAMS  
 V. 371 Pg 385  
 11-00010  
 11-00004  
 ①  
 11.819 AC  
 3.19 AC

LYNN M. ABRAMS-SPILKER  
 OR 319 Pg. 635  
 11-00808  
 ⑧ 2.464 AC  
 2.112 AC

HAROLD M. THOMPSON  
 OR 491 Pg 795  
 11-00956  
 ⑤ 3.317 AC  
 4.89 AC

RAYBURN, ETHEL M.  
 OR 374 Pg 205  
 11-00015  
 ⑩ 1.963 AC

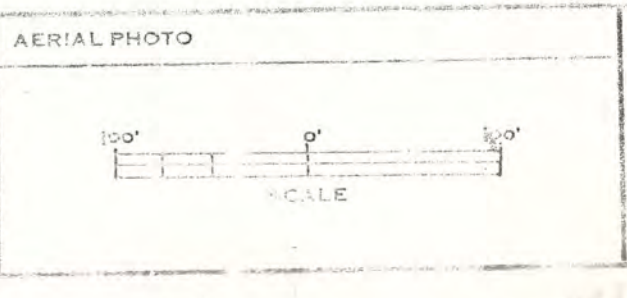
RICHARD A. EMERY THOMPSON  
 OR 467 Pg 2275  
 11-00958  
 ⑫ 2.797 AC

THE UNRECORDED PLAT  
 OF  
 MARYSVILLE

DELMAR E. GEORGE  
 County Engineer

TONY BROWN  
 County Auditor

HOWARD R. KING  
 BY RBS  
 DATE 11-14-70  
 7-1-57



TAX MAP  
 JACKSON TWP  
 CLERNSEY COUNTY OHIO

SHEET NO.	
RANGE	TWP.
31	517