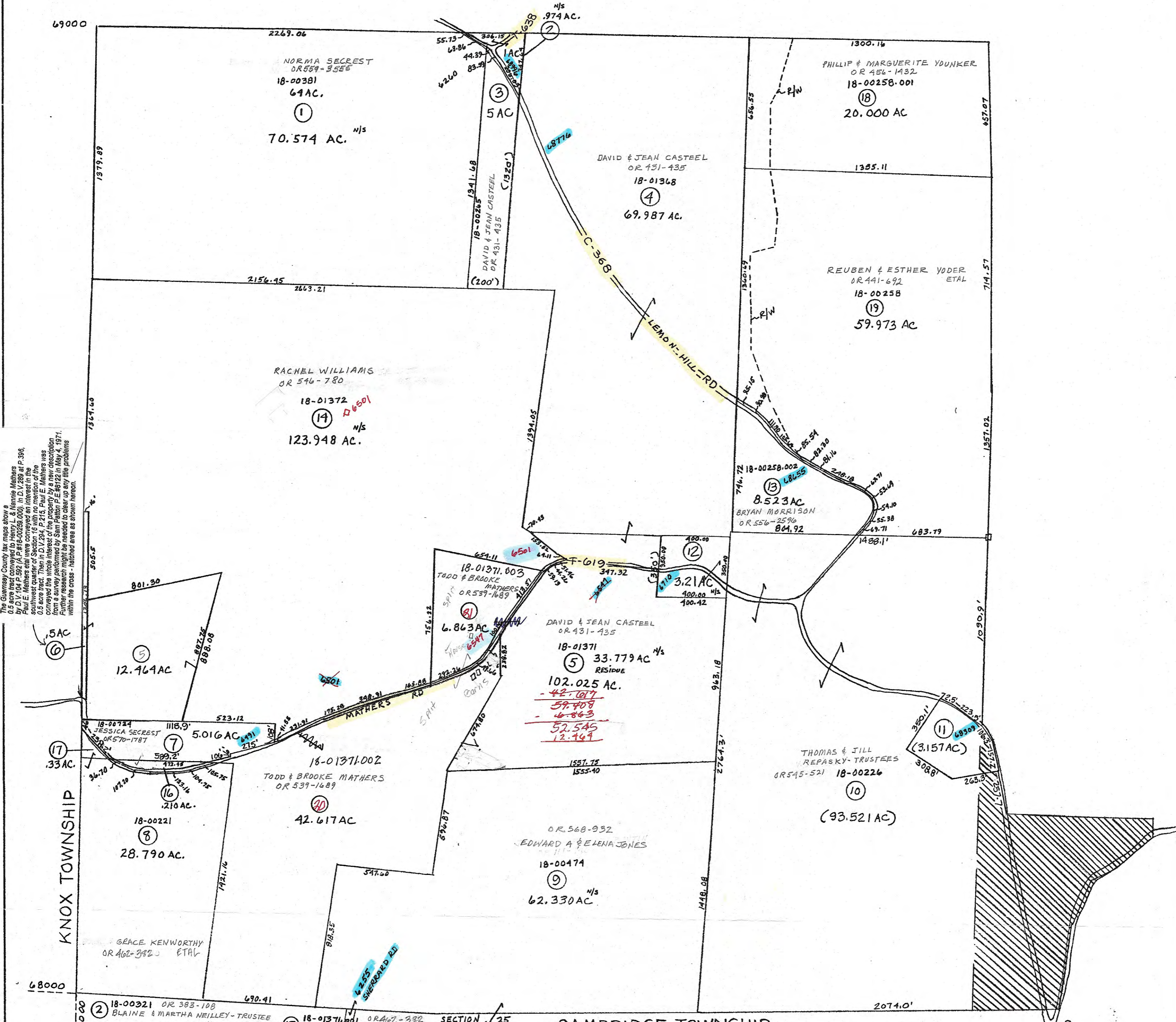


Surveyors note:  
 The Guernsey County tax maps show 8  
 parcels owned by Henry L. & Helene Mathers  
 in D.V. 254, P. 215, Paul E. Mathers was  
 the southwest quarter of Section 16 with no mention of the  
 0.8 acre tract. Then in D.V. 254, P. 215, Paul E. Mathers was  
 from and the whole interest of the property by a new description  
 from the original description in D.V. 254, P. 215, in May 4, 1971.  
 Further research might be needed to clear up any problems  
 within the cross-hatched area as shown hereon.



**PRELIMINARY**  
 MAPS IN THIS OFFICE ARE  
 FOR TAX PURPOSES  
 ONLY-VERIFY INFO. BY DEED RECORDS

② 18-00221 OR 383-108 BLAINE & MARTHA NEILLEY-TRUSTEE	①⑦ 18-01371, 001 OR 462-382 GRACE KENWORTHY ETAL	SECTION 25
⑥ 18-00259 OR 472-116 CARL H MATHERS TRUSTEE		
⑪ 18-01365 V. 293-33 TENNESSEE GAS PIPELINE CO		
⑫ 18-00970 OR 326-893 CARL & ELAINE DEBOURG		
⑬ 18-00221-001 OR 570-1787 JESSICA SECREST		

<b>DELMAR E. GEORGE</b> County Engineer	<b>HOWARD R. KING</b> cartographer	MER 1-'91 MER 7-'08	Revised	Aerial Photo 2-6-21 2-6-23	<b>TAX MAP</b> <b>LIBERTY TOWNSHIP</b> scale 1"=400' <b>GUERNSEY COUNTY OHIO</b>	Range <b>3</b>	Twp <b>3</b>	<b>516</b>
--	---------------------------------------	------------------------	---------	----------------------------------	---	-------------------	-----------------	------------