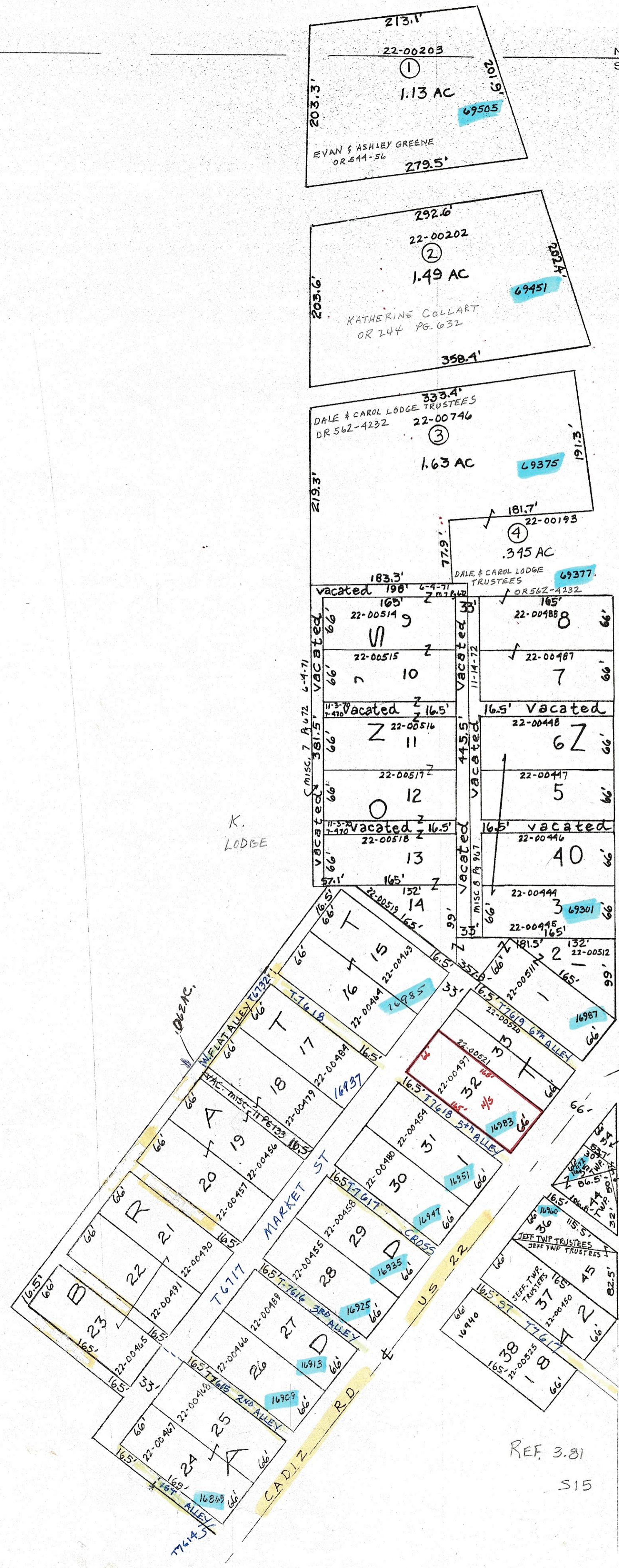


NE 1/4  
SE 1/4  
NW 1/4  
SW 1/4  
SECTION 15  
SECTION 14



K.  
LODGE

BIRMINGHAM RD.

C-71

OHIO 285

M.  
GROH JR.

REF. 3.81  
S15

20

<p><b>DELMAR E. GEORGE</b> County Engineer <b>TONY BROWN</b> County Auditor</p>	<p><b>HOWARD R KING</b> cartographer JEB '77 Drawn</p>	<p>3-2000 MER Revised</p>	<p>Aerial Photo</p>	<p><b>TAX MAP</b> <b>MADISON TWP - WINTERSET</b> scale 1" = 100' <b>GUERNSEY COUNTY OHIO</b></p>	<p>Range Twp 1 3</p>	<p>S15-1</p>
---	--	---------------------------	---------------------	--	--------------------------	--------------

LOTS 39-43, 46-59 VACATED

TELEDYNE POST