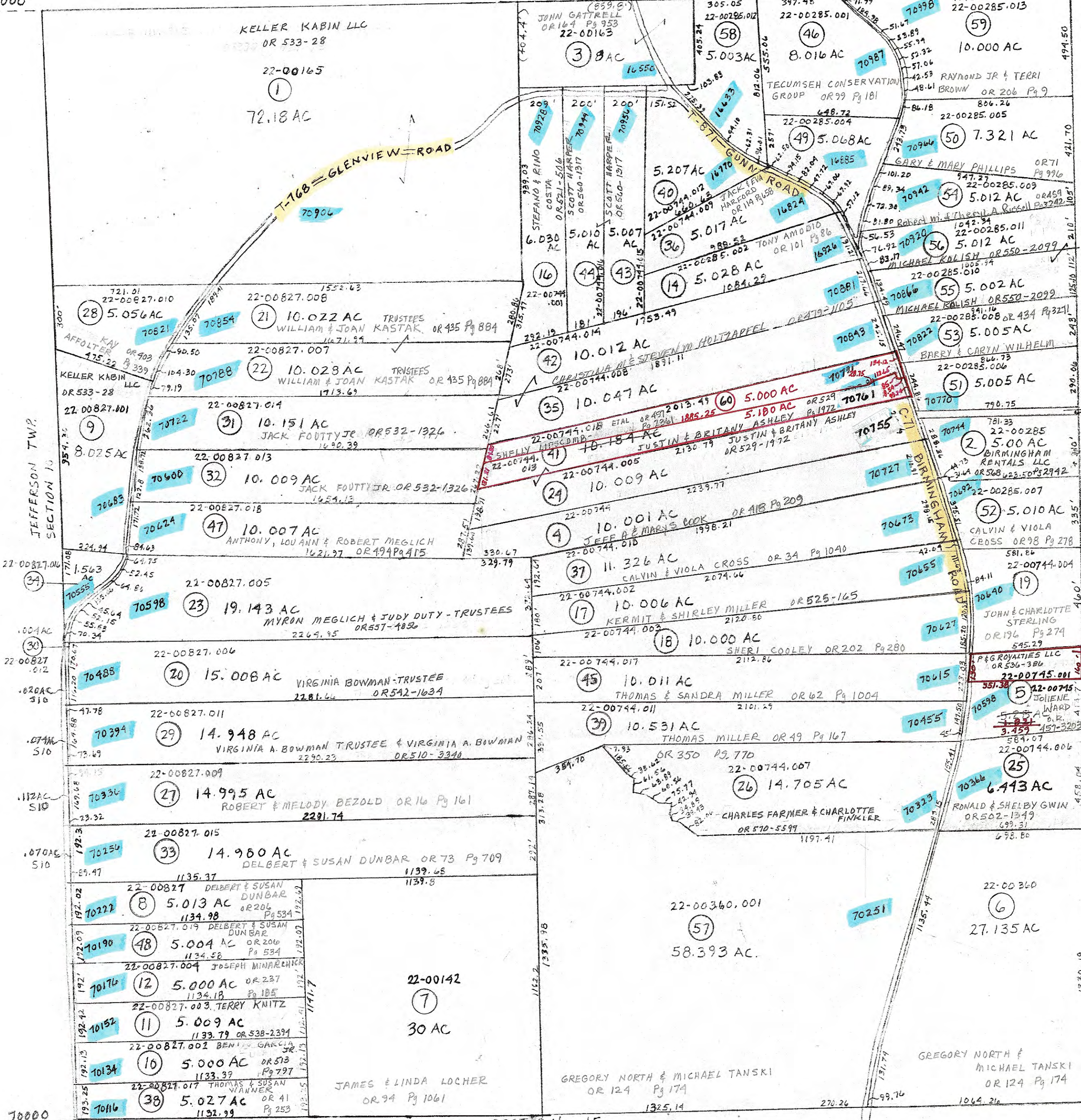


71000

SECTION 5



70000

SECTION 15

- 15 22-00285.003 OR 529-1819 ADRIAN & MIRIAM HERSHBERGER
- 30 OR 489-302 22-00827.012 VINCE KAUCIC & KIM PARKER
- 34 OR 211 Pg 514 VINCENT KAUCIC & KIM PARKER
- 40 22-00744.012 OR 564-3423 ROBERT THEUS & SARAH WESLEY-THEUS
- 49 OR 460-2052 REBECCA M. DOMINGER
- 51 OR 461-115 ADRIAN JAS & MIRIAM K. HERSHBERGER
- 58 OR 565-2038 ANDREW COURSER

PRELIMINARY
 MAPS IN THIS OFFICE ARE
 FOR TAX PURPOSES
 ONLY-VERIFY INFO. BY DEED RECORDS

DELMAR E. GEORGE
 County Engineer

TONY BROWN
 County Auditor

cartographer
 JRS '84
 Drawn

7-99 MER. Revised

Aerial Photo
 2-G-106
 OLD 5-G-40
 NEW 5-A5

TAX MAP
 MADISON TOWNSHIP
 GUERNSEY COUNTY OHIO

Range Twp
 1 3 56

6