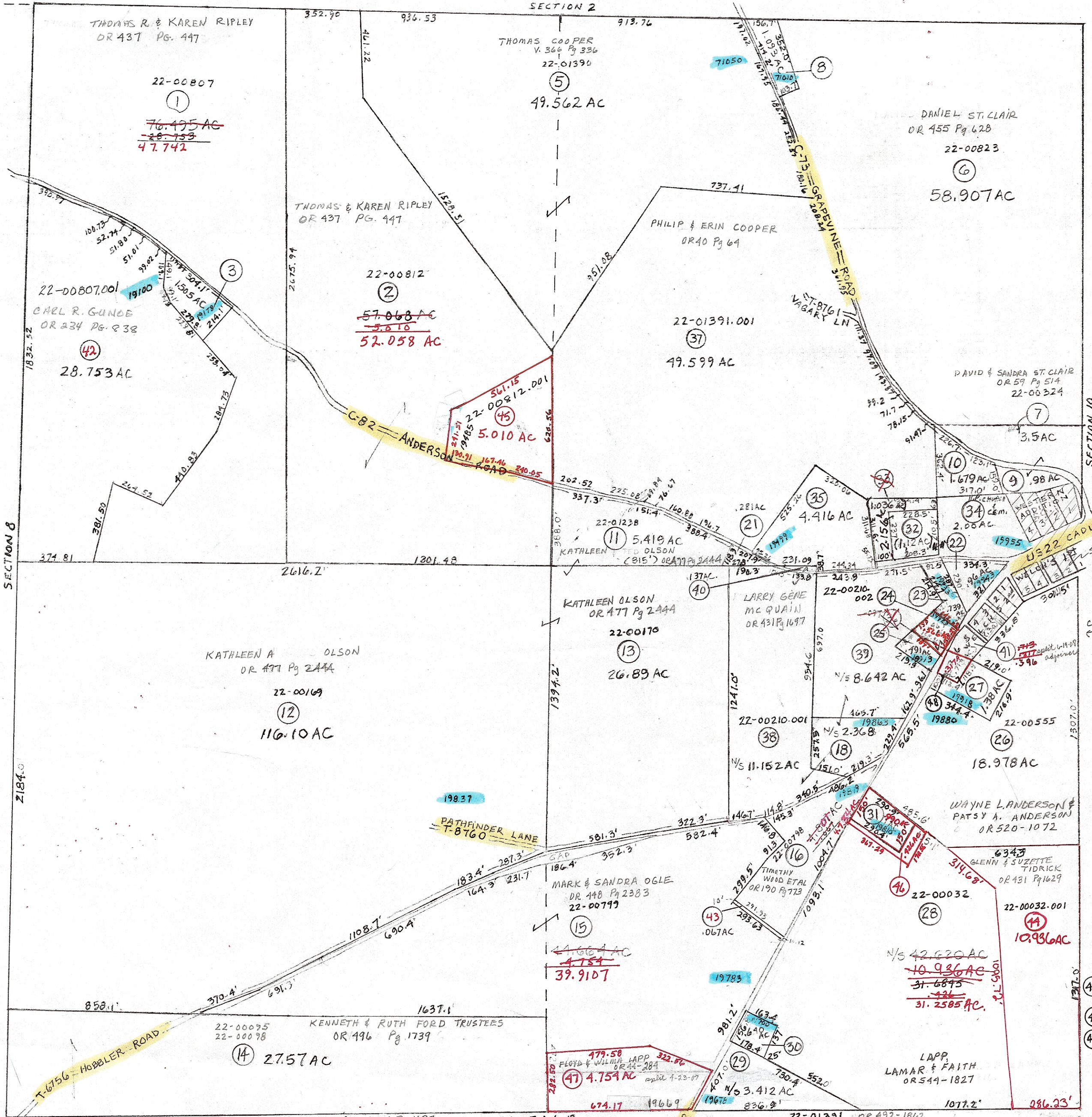


22-00059.001 OR 85 Pg 520
 RANDY W & CAROL J. FABIAN

80000



- | | | | |
|---|---|--|---|
| <p>22-00808 OR 533-1762
 JARED & KATRINA SCHROCK</p> <p>22-00824 OR 565-5074
 MELISSA GRANTON</p> <p>22-00320 OR 59 Pg 514
 DAVID & SANDRA ST. CLAIR</p> <p>22-00013 OR 520-1072
 WAYNE & PATSY ANDERSON</p> <p>22-00210 OR 431 Pg 1697
 LARRY GENE McQUAIN</p> | <p>22-01239 OR 431 Pg 1697
 LARRY GENE McQUAIN</p> <p>22-00236 OR 13 Pg 613
 GEORGE & ELIZABETH MONTGOMERY</p> <p>22-00534 OR 563-1621
 ZACKERY TIDRICK</p> <p>22-00114 OR 531-2121
 JOSHUA R. McQUAIN</p> <p>22-00059 OR 36 Pg 478
 DONALD & BARBARA SHIPMAN</p> | <p>SECTION 12</p> <p>22-00556 OR 542-2387
 SEAN BESKID & ALEXA ABRAMS</p> <p>22-00031 OR 533-3206
 MILLARD GROH JR</p> <p>22-00237 OR 135 Pg 868
 FLOYD & WILMA LAPP</p> <p>22-00387 OR 401-43
 CALVIN A & SADIE M TROYER</p> <p>22-01042 VJ4Pg540
 UP CHURCH & CEMETERY</p> | <p>22-01391 OR 492-1802
 THE HOSTA LIVING TRUST</p> <p>22-00210.002 OR 431 Pg 1697
 LARRY GENE McQUAIN</p> <p>22-00210.003 OR 431 Pg 1697
 LARRY GENE McQUAIN</p> <p>22-00141 OR 487 Pg 808
 JONATHAN D. RABER</p> <p>22-00792.001 OR 448 Pg 2383
 MARK A. & SANDRA K. OGLE</p> |
|---|---|--|---|

PRELIMINARY
 MAPS IN THIS OFFICE ARE
 FOR TAX PURPOSES
 ONLY-VERIFY INFO. BY DEED RECORDS

9

<p>DELMAR E. GEORGE County Engineer</p> <p>TONY BROWN County Auditor</p>	<p>HOWARD P. KING cartographer</p> <p>JBS 83 Drawn</p>	<p>99 MER</p>	<p>Revised</p>	<p>Aerial Photo 1-G 84</p>	<p>TAX MAP MADISON TOWNSHIP GUERNSEY COUNTY OHIO</p>	<p>Scale 1" = 400'</p>	<p>Range Twp 1 3 59</p>
--	---	---------------	----------------	---	---	------------------------	--------------------------------------