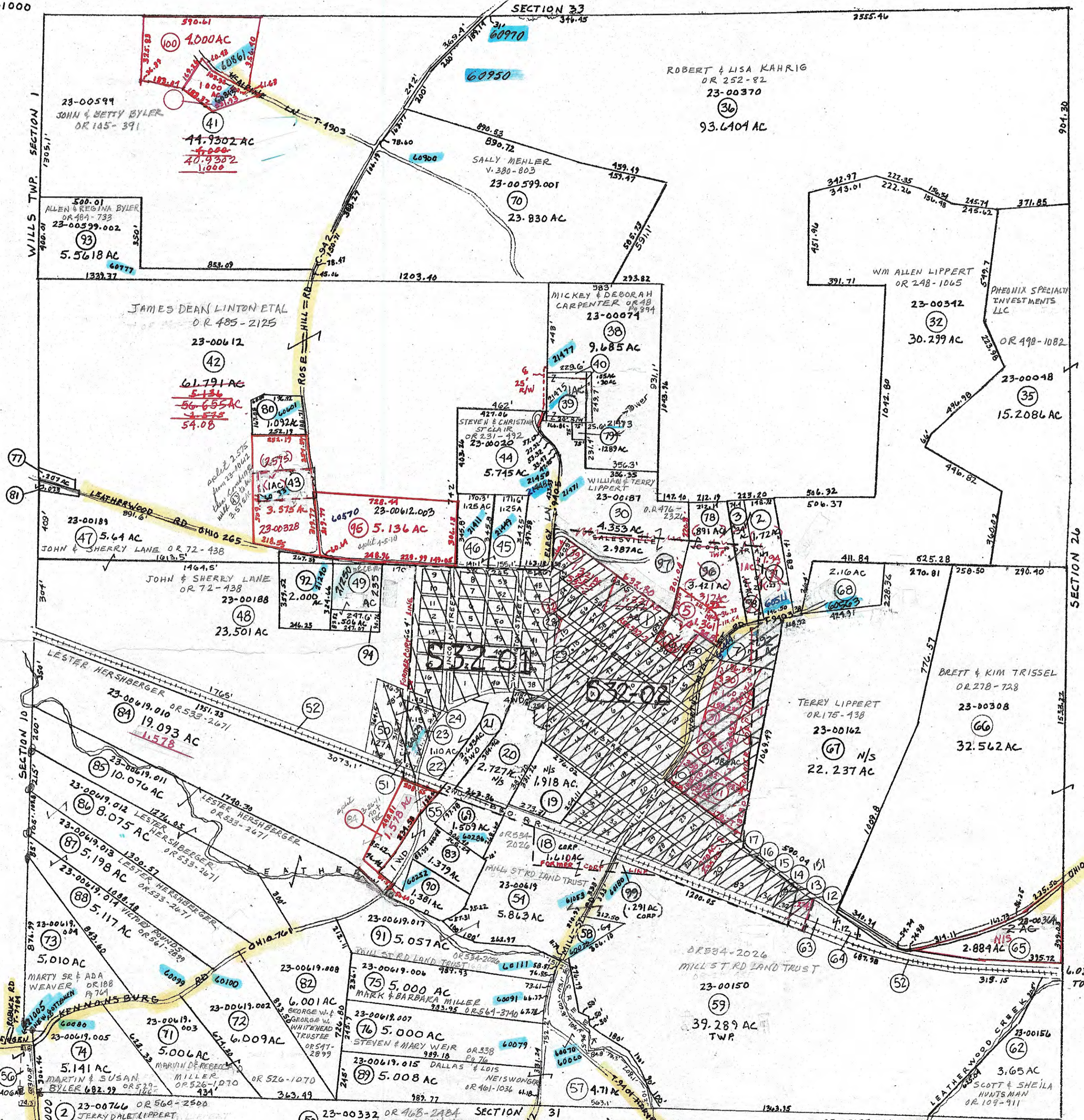


61000



- 18 23-00992 OR 534-2026 MILL ST RD LAND TRUST
- 19 23-00999 OR 539-2696
- 20 23-01093 OR 555-2593
- 21 23-01103 OR 551-2632
- 22 23-01105 OR 474-3272
- 23 23-00767 OR 237-958
- 24 23-00389 OR 237-958
- 25 23-00766 OR 560-2500
- 26 23-00765 OR 560-2500
- 27 23-00998 OR 571-0938
- 28 23-00634 OR 499-1936
- 29 23-00633 & 23-00632 OR 499-1936
- 30 23-00328 OR 485-2122
- 31 23-00193 OR 156-115
- 32 23-00606 OR 455-669
- 33 23-00810 OR 37-463 & DV 149
- 34 23-00332 OR 468-2484
- 35 23-00333 OR 468-2484
- 36 23-00714
- 37 23-00631 V. 330-736
- 38 23-00149 OR 144-193
- 39 23-00085 V. 383-548
- 40 23-00720 V. 228-455
- 41 23-00425 OR 236-100
- 42 23-00619.000
- 43 23-00619.002
- 44 23-00619.003
- 45 23-00619.005
- 46 23-00619.007
- 47 23-00619.015
- 48 23-00619.006
- 49 23-00619.007
- 50 23-00619.015
- 51 23-00619.006
- 52 23-00619.007
- 53 23-00619.015
- 54 23-00619.006
- 55 23-00619.007
- 56 23-00619.015
- 57 23-00619.006
- 58 23-00619.007
- 59 23-00619.015
- 60 23-00619.006
- 61 23-00619.007
- 62 23-00619.015
- 63 23-00619.006
- 64 23-00619.007
- 65 23-00619.015
- 66 23-00619.006
- 67 23-00619.007
- 68 23-00619.015
- 69 23-00619.006
- 70 23-00619.007
- 71 23-00619.015
- 72 23-00619.006
- 73 23-00619.007
- 74 23-00619.015
- 75 23-00619.006
- 76 23-00619.007
- 77 23-00619.015
- 78 23-00619.006
- 79 23-00619.007
- 80 23-00619.015
- 81 23-00619.006
- 82 23-00619.007
- 83 23-00619.015
- 84 23-00619.006
- 85 23-00619.007
- 86 23-00619.015
- 87 23-00619.006
- 88 23-00619.007
- 89 23-00619.015
- 90 23-00619.006
- 91 23-00619.007
- 92 23-00619.015
- 93 23-00619.006
- 94 23-00619.007
- 95 23-00619.015
- 96 23-00619.006
- 97 23-00619.007
- 98 23-00619.015
- 99 23-00619.006
- 100 23-00619.007

<p><b>DELMAR E. GEORGE</b> County Engineer</p> <p><b>TONY BROWN</b> County Auditor</p>	<p><b>HOWARD R KING</b> cartographer</p> <p>JES 80 Drawn</p>	<p>MER 11/85 MER 9/91 MER 3-09</p>	<p>Aerial Photo 1 G 64</p>	<p><b>TAX MAP</b> <b>MILLWOOD TOWNSHIP</b> GUERNSEY COUNTY OHIO</p> <p>scale 1" = 400'</p>	<p>Range Twp 7 9 532</p>
------------------------------------------------------------------------------------------------	----------------------------------------------------------------------	--------------------------------------------	--------------------------------	----------------------------------------------------------------------------------------------------	------------------------------

**PRELIMINARY**  
MAPS IN THIS OFFICE ARE  
FOR TAX PURPOSES  
ONLY-VERIFY INFO. BY DEED RECORDS

18