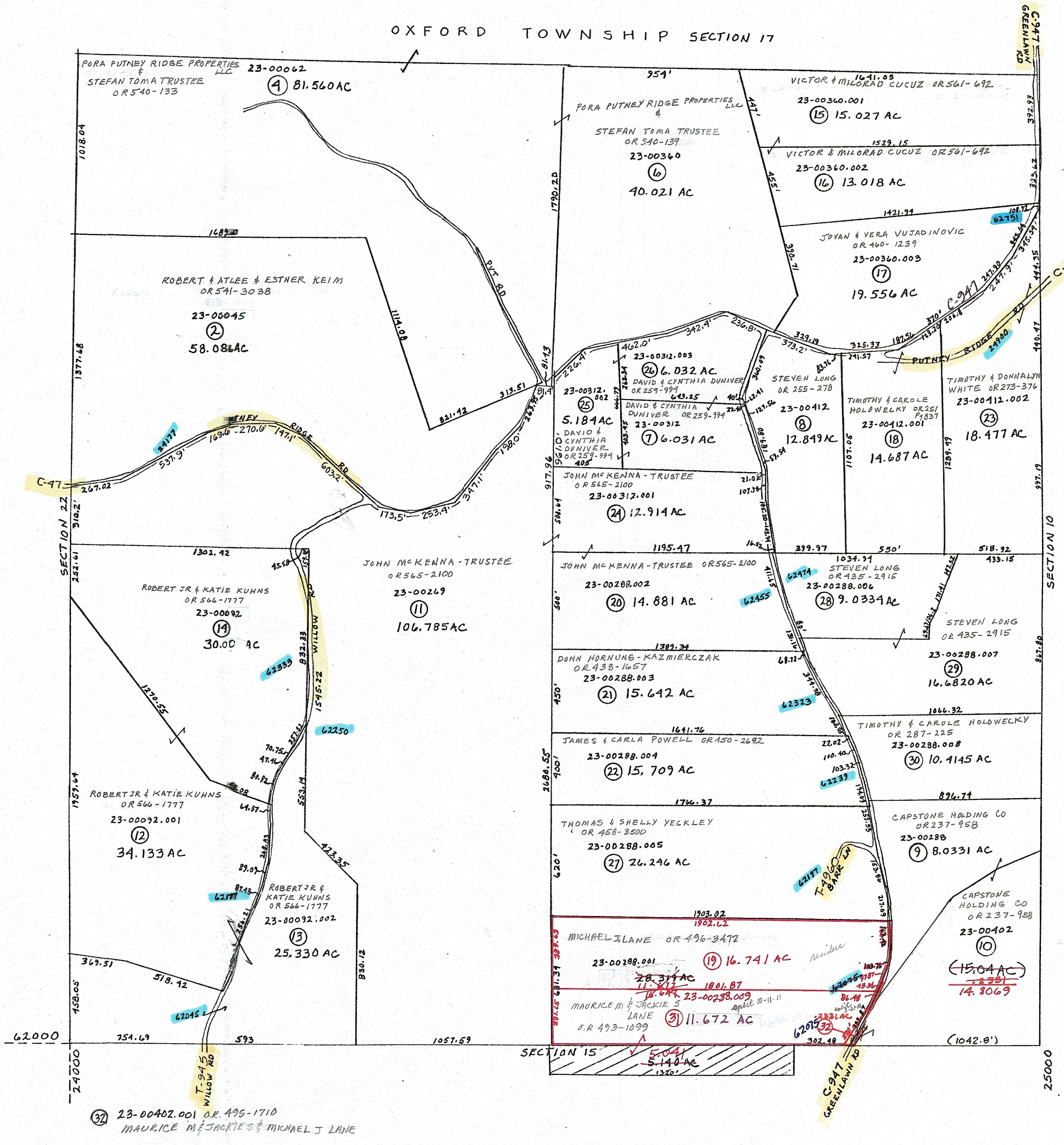


OXFORD TOWNSHIP SECTION 17



PRELIMINARY
MAPS IN THIS OFFICE ARE
FOR TAX PURPOSES
ONLY-VERIFY INFO. BY DEED RECORDS

3

DELMAR E. GEORGE County Engineer TONY BROWN County Auditor	HOWARD R KING cartographer JBS'82 Drawn	MER 1/85 Revised MER 2-09	Aerial Photo OLD G-G-82 NEW #103	TAX MAP MILLWOOD TOWNSHIP scale 1" = 400' GUERNSEY COUNTY OHIO	Range 7	Twp 9	Sig 516
---	--	------------------------------	--	---	------------	----------	------------