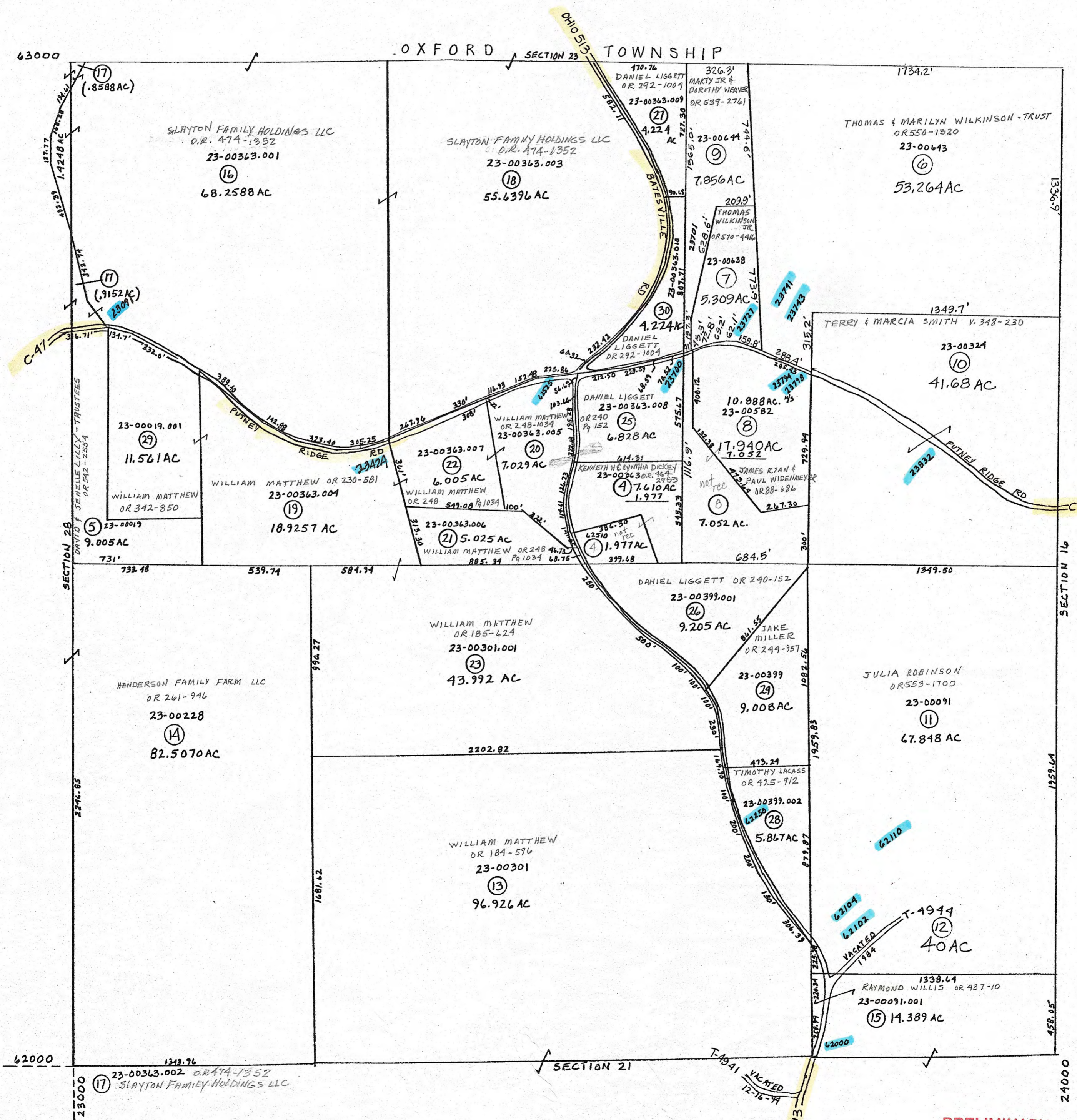


OXFORD SECTION 23 TOWNSHIP



PRELIMINARY
 MAPS IN THIS OFFICE ARE
 FOR TAX PURPOSES
 ONLY-VERIFY INFO. BY DEED RECORDS

4

<p>DELMAR E. GEORGE County Engineer</p> <p>TONY BROWN County Auditor</p>	<p>HOWARD R KING Cartographer</p> <p>JBS'02 Drawn</p>	<p>MER 11/05 MER 2-'09</p> <p>Revised</p>	<p>Aerial Photo OLD 6-6-82</p>	<p>TAX MAP MILLWOOD TOWNSHIP GUERNSEY COUNTY OHIO</p> <p>scale 1" = 400'</p>	<p>Range 7</p>	<p>Twp 9</p>	<p>522</p>
--	--	--	---	---	-------------------------------------	-----------------------------------	------------