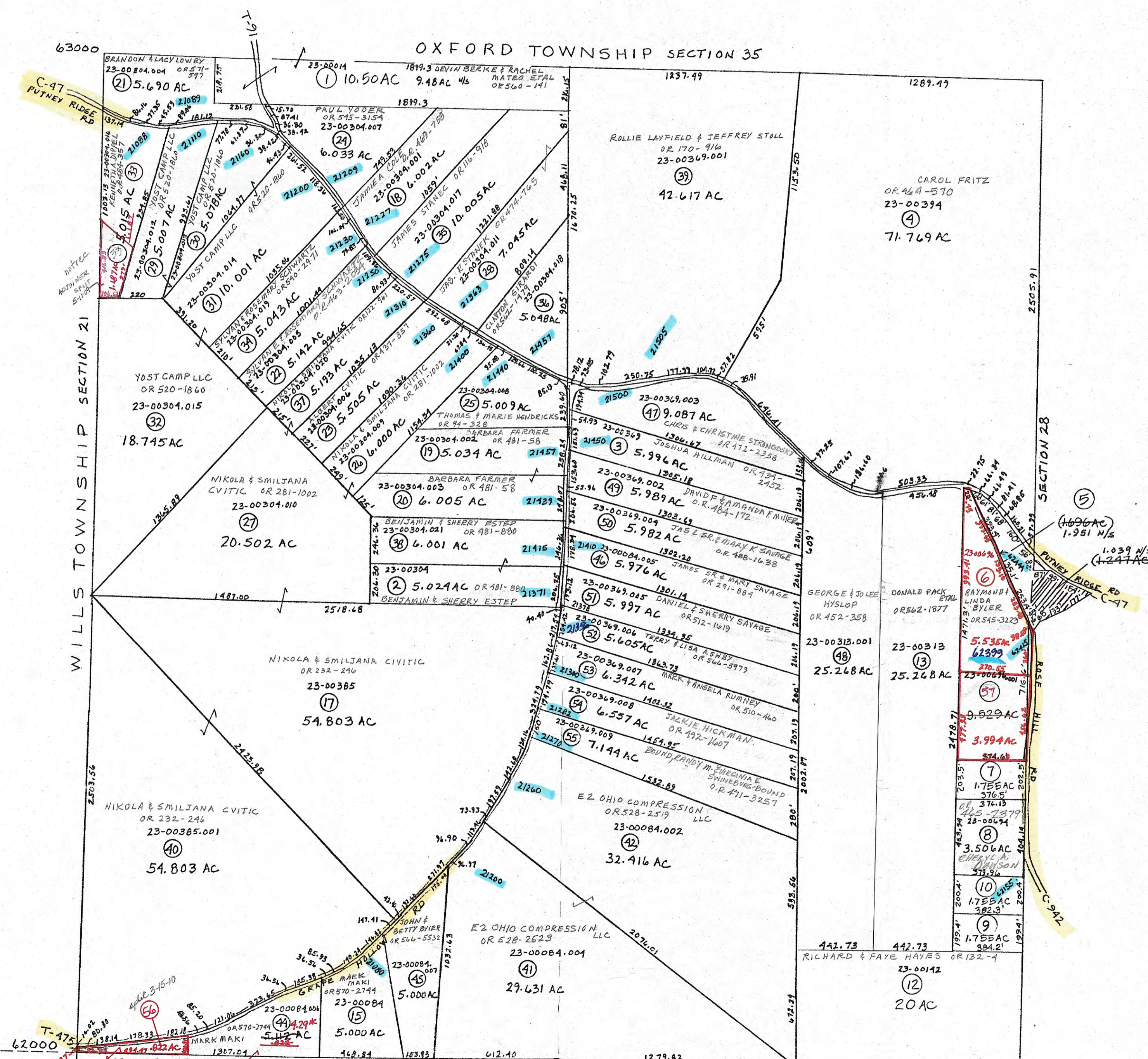


OXFORD TOWNSHIP SECTION 35



WILLS TOWNSHIP SECTION 21

SECTION 28

SECTION 33

- ⑤ 23-00676 OR 518-277 THOMAS MATTINGLY ETAL
- ⑦ 23-00695 OR 556-2353 JAMES McNABB & CHARLES McKINLEY
- ⑨ 23-00691 OR 493-1511 CHERYL DAWSON
- ⑩ 23-00692 OR 562-1874 DONALD PACK ETAL
- ⑫ 23-00084.008 O.R. 470-7640 JOHN & BETTY BYLER
- ⑮ 23-00084.004 OR 547-11 JOSEPH & MIRIAM BYLER
- ⑰ 23-00385 NIKOLA & SMILJANA CVITIC OR 232-246 54.803 AC
- ⑲ 5.034 AC BARBARA FARMER OR 481-58
- ⑳ 6.005 AC BARBARA FARMER OR 481-58
- ㉑ 5.029 AC OR 481-884 BENJAMIN & SHERRY ESTEP
- ㉒ 6.001 AC BENJAMIN & SHERRY ESTEP
- ㉓ 5.505 AC NIKOLA & SMILJANA CVITIC OR 232-246
- ㉔ 5.193 AC NIKOLA & SMILJANA CVITIC OR 232-246
- ㉕ 5.142 AC NIKOLA & SMILJANA CVITIC OR 232-246
- ㉖ 5.043 AC NIKOLA & SMILJANA CVITIC OR 232-246
- ㉗ 10.001 AC YOST CAMP LLC OR 520-1860 18.745 AC
- ㉘ 5.009 AC THOMAS & MARIE HENDRICKS OR 44-328
- ㉙ 5.009 AC THOMAS & MARIE HENDRICKS OR 44-328
- ㉚ 5.009 AC THOMAS & MARIE HENDRICKS OR 44-328
- ㉛ 5.009 AC THOMAS & MARIE HENDRICKS OR 44-328
- ㉜ 5.009 AC THOMAS & MARIE HENDRICKS OR 44-328
- ㉝ 5.009 AC THOMAS & MARIE HENDRICKS OR 44-328
- ㉞ 5.009 AC THOMAS & MARIE HENDRICKS OR 44-328
- ㉟ 5.009 AC THOMAS & MARIE HENDRICKS OR 44-328
- ㊱ 5.009 AC THOMAS & MARIE HENDRICKS OR 44-328
- ㊲ 5.009 AC THOMAS & MARIE HENDRICKS OR 44-328
- ㊳ 5.009 AC THOMAS & MARIE HENDRICKS OR 44-328
- ㊴ 5.009 AC THOMAS & MARIE HENDRICKS OR 44-328
- ㊵ 5.009 AC THOMAS & MARIE HENDRICKS OR 44-328
- ㊶ 5.009 AC THOMAS & MARIE HENDRICKS OR 44-328
- ㊷ 5.009 AC THOMAS & MARIE HENDRICKS OR 44-328
- ㊸ 5.009 AC THOMAS & MARIE HENDRICKS OR 44-328
- ㊹ 5.009 AC THOMAS & MARIE HENDRICKS OR 44-328
- ㊺ 5.009 AC THOMAS & MARIE HENDRICKS OR 44-328
- ㊻ 5.009 AC THOMAS & MARIE HENDRICKS OR 44-328
- ㊼ 5.009 AC THOMAS & MARIE HENDRICKS OR 44-328
- ㊽ 5.009 AC THOMAS & MARIE HENDRICKS OR 44-328
- ㊾ 5.009 AC THOMAS & MARIE HENDRICKS OR 44-328
- ㊿ 5.009 AC THOMAS & MARIE HENDRICKS OR 44-328

PRELIMINARY  
MAPS IN THIS OFFICE ARE  
FOR TAX PURPOSES  
ONLY-VERIFY INFO. BY DEED RECORDS

DELMAR E. GEORGE County Engineer TONY BROWN County Auditor	HOWARD R KING cartographer JBS '82 Drawn	MER 11/85 MER 2-09 Revised	Aerial Photo 1-G-62	TAX MAP MILLWOOD TOWNSHIP GUERNSEY COUNTY OHIO scale 1" = 400'	Range Twp 7 9 34
---	---	----------------------------------	------------------------	---	---------------------

TELEDYNE POST