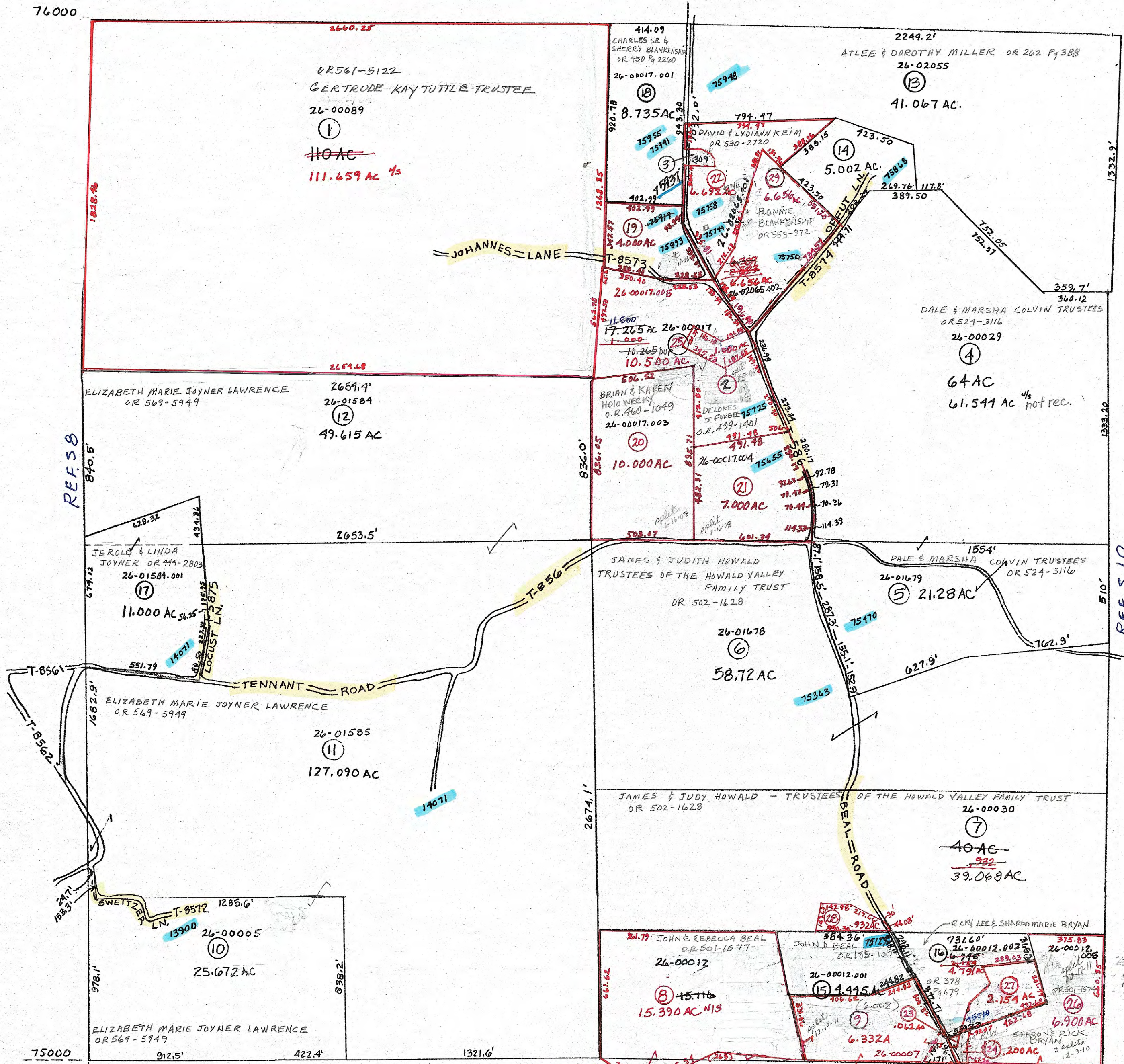


76000



REF S 10

15000

- REF S 12
- ⑨ 26-00007 OR 533-2585 JASON JUZWIAK
 - ⑩ 26-00005 OR 569-5949 ELIZABETH MARIE JOYNER LAWRENCE 25.672 AC
 - ⑪ 26-01585 OR 569-5949 ELIZABETH MARIE JOYNER LAWRENCE 127.090 AC
 - ⑫ 26-01584 OR 569-5949 ELIZABETH MARIE JOYNER LAWRENCE 49.615 AC
 - ⑬ 26-00089 OR 561-5122 GERTRUDE KAY TUTTLE-TRUSTEE 111.659 AC ~~110 AC~~
 - ⑭ 26-02066 OR 544-2298 ATLEE & DOROTHY MILLER
 - ⑮ 26-00017.002 OR 564-3193 DAVID & LYDIANN KEIM
 - ⑯ 26-02065.001 OR 469-3487 ELMER E. BLANKENSHIP JR.
 - ⑰ 26-00012.003 OR 478-3166 RICKY & SHARON BRYAN
 - ⑱ 26-00012.004 OR 563-1234 DAVID & MARSHA LUTTRELL
 - ⑲ 26-00017.005 OR 558-972 RONNIE LEE BLANKENSHIP
 - ⑳ 26-00012.005 OR 501-1574 SHARON & RICK BRYAN
 - ㉑ 26-00012.006 OR 563-1234 DAVID & MARSHA LUTTRELL
 - ㉒ 26-00030.001 OR 551-342 JAMES L. & JUDITH A. HOWARD TRUSTEES
 - ㉓ 26-00012.001 OR 501-1577 JOHN & REBECCA BEAL
 - ㉔ 26-00012.002 OR 501-1577 JOHN & REBECCA BEAL
 - ㉕ 26-00012.003 OR 501-1577 JOHN & REBECCA BEAL
 - ㉖ 26-00012.004 OR 501-1577 JOHN & REBECCA BEAL
 - ㉗ 26-00012.005 OR 501-1577 JOHN & REBECCA BEAL
 - ㉘ 26-00012.006 OR 501-1577 JOHN & REBECCA BEAL
 - ㉙ 26-00012.007 OR 501-1577 JOHN & REBECCA BEAL
 - ㉚ 26-00012.008 OR 501-1577 JOHN & REBECCA BEAL
 - ㉛ 26-00012.009 OR 501-1577 JOHN & REBECCA BEAL
 - ㉜ 26-00012.010 OR 501-1577 JOHN & REBECCA BEAL
 - ㉝ 26-00012.011 OR 501-1577 JOHN & REBECCA BEAL
 - ㉞ 26-00012.012 OR 501-1577 JOHN & REBECCA BEAL
 - ㉟ 26-00012.013 OR 501-1577 JOHN & REBECCA BEAL
 - ㊱ 26-00012.014 OR 501-1577 JOHN & REBECCA BEAL
 - ㊲ 26-00012.015 OR 501-1577 JOHN & REBECCA BEAL
 - ㊳ 26-00012.016 OR 501-1577 JOHN & REBECCA BEAL
 - ㊴ 26-00012.017 OR 501-1577 JOHN & REBECCA BEAL
 - ㊵ 26-00012.018 OR 501-1577 JOHN & REBECCA BEAL
 - ㊶ 26-00012.019 OR 501-1577 JOHN & REBECCA BEAL
 - ㊷ 26-00012.020 OR 501-1577 JOHN & REBECCA BEAL
 - ㊸ 26-00012.021 OR 501-1577 JOHN & REBECCA BEAL
 - ㊹ 26-00012.022 OR 501-1577 JOHN & REBECCA BEAL
 - ㊺ 26-00012.023 OR 501-1577 JOHN & REBECCA BEAL
 - ㊻ 26-00012.024 OR 501-1577 JOHN & REBECCA BEAL
 - ㊼ 26-00012.025 OR 501-1577 JOHN & REBECCA BEAL
 - ㊽ 26-00012.026 OR 501-1577 JOHN & REBECCA BEAL
 - ㊾ 26-00012.027 OR 501-1577 JOHN & REBECCA BEAL
 - ㊿ 26-00012.028 OR 501-1577 JOHN & REBECCA BEAL

PRELIMINARY
 MAPS IN THIS OFFICE ARE
 FOR TAX PURPOSES
 ONLY-VERIFY INFO. BY DEED RECORDS

17

DELMAR E. GEORGE County Engineer TONY BROWN County Auditor	HOWARD R KING cartographer JBS '82 Drawn	ME 3-07 Revised	Aerial Photo 2-G-112 2-G-121	TAX MAP MONROE TOWNSHIP GUERNSEY COUNTY OHIO scale 1" = 400'	Range Twp 2 4 S9
---	---	-----------------	------------------------------------	---	---------------------