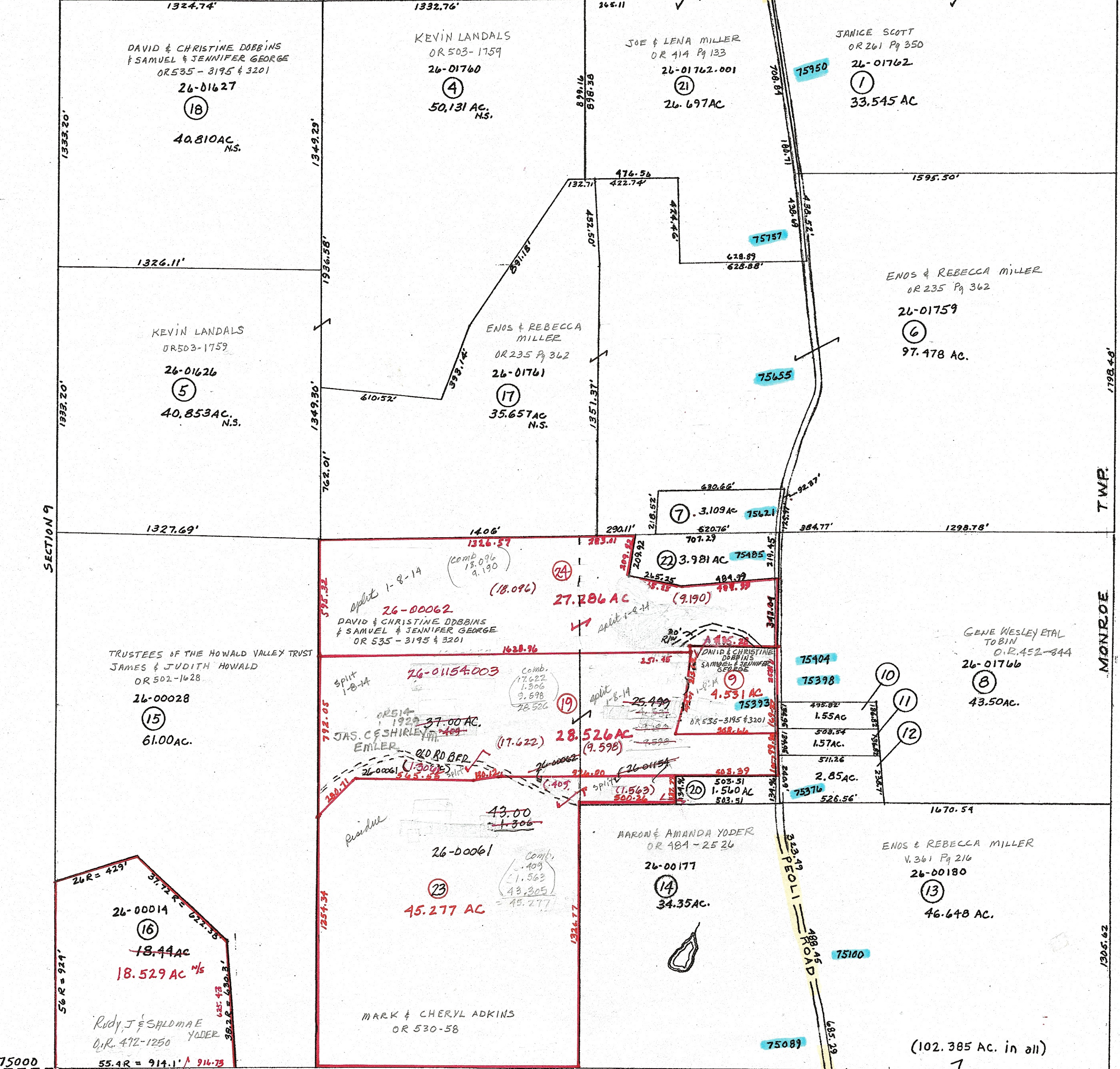


76000

SECTION I



MONROE TWP. WASHINGTON

- ⑦ 26-00064 OR 535-3195 & DAVID & CHRISTINE DOBBINS & SAMUEL & JENNIFER GEORGE
- ⑩ 26-01155 OR 951 Pg 1478 JAMES & SHIRLEY EMLER
- ⑪ 26-01153 OR 511-2875 KENNETH & JOYCE TOBIN & SHEILA SCHWORN
- ⑫ 26-00001 OR 498-3407 DONALD & LINDA ADKINS
- ⑳ 26-01154.001 OR 530-58 MARK & CHERYL ADKINS
- ㉓ 26-01154.002 OR 474 Pg 1428 DAVID & CHRISTINE DOBBINS

PRELIMINARY MAPS IN THIS OFFICE ARE FOR TAX PURPOSES ONLY-VERIFY INFO. BY DEED RECORDS

18

DELMAR E. GEORGE County Engineer TONY BROWN County Auditor	HOWARD R KING cartographer Drawn	MER 3-'07 Revised	Aerial Photo -2GG-112	TAX MAP MONROE TWP. GUERNSEY COUNTY OHIO scale 1"=400' FEB. 1978	Range 2 4 S10	Twp 18
---	--	-------------------	--------------------------	---	------------------	-----------