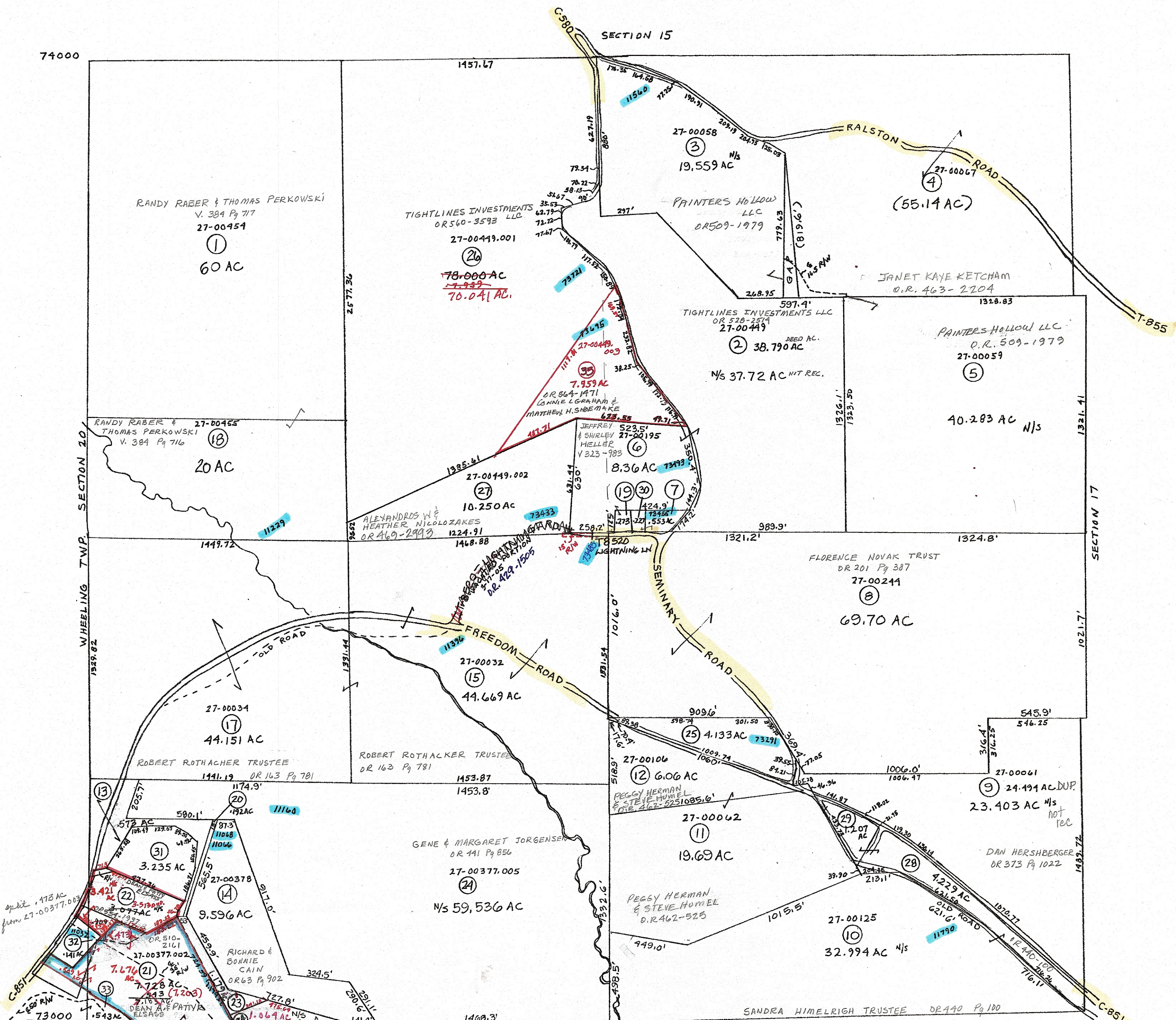


74000

SECTION 15



SECTION 25

- ⑦ 27-00123 OR 210 Pg 399 LARRY JR & JENNIFER WILSON
- ⑬ 27-00377 V. 295 Pg 775 CARL BAGGETT
- ⑰ 27-00467 OR 42 Pg 690 JEFFERY & SHIRLEY HELLER
- ⑳ 27-00377.001 OR 63 Pg 902 RICHARD & BONNIE CAIN
- ㉓ 27-00377.004 OR 308 Pg 715 RICHARD CAIN
- ㉕ 27-00061.001 OR 439 Pg 154 DAVID & EILEEN SHIELDS
- ㉘ 27-00061.002 OR 440 Pg 100 SANDRA HIMELRIGH
- ㉙ 27-00061.003 OR 440 Pg 100 SANDRA HIMELRIGH
- ㉚ 27-00467.001 OR 254 Pg 1007 LARRY JR & JENNIFER WILSON
- ㉛ 27-00377.006 OR 410 Pg 690 GENE & MARGARET JORGENSEN
- ㉜ 27-00377.008 OR 543-1305 K & S ENDAVOR LLC
- ㉝ 27-00377.007 OR 448-728 MATTHEW J. PERILLO
- ㉞ 27-00377.009 OR 459-2119 Robert L. & AMYM M. WUTT

**PRELIMINARY**  
 MAPS IN THIS OFFICE ARE  
 FOR TAX PURPOSES  
 ONLY-VERIFY INFO. BY DEED RECORDS

26