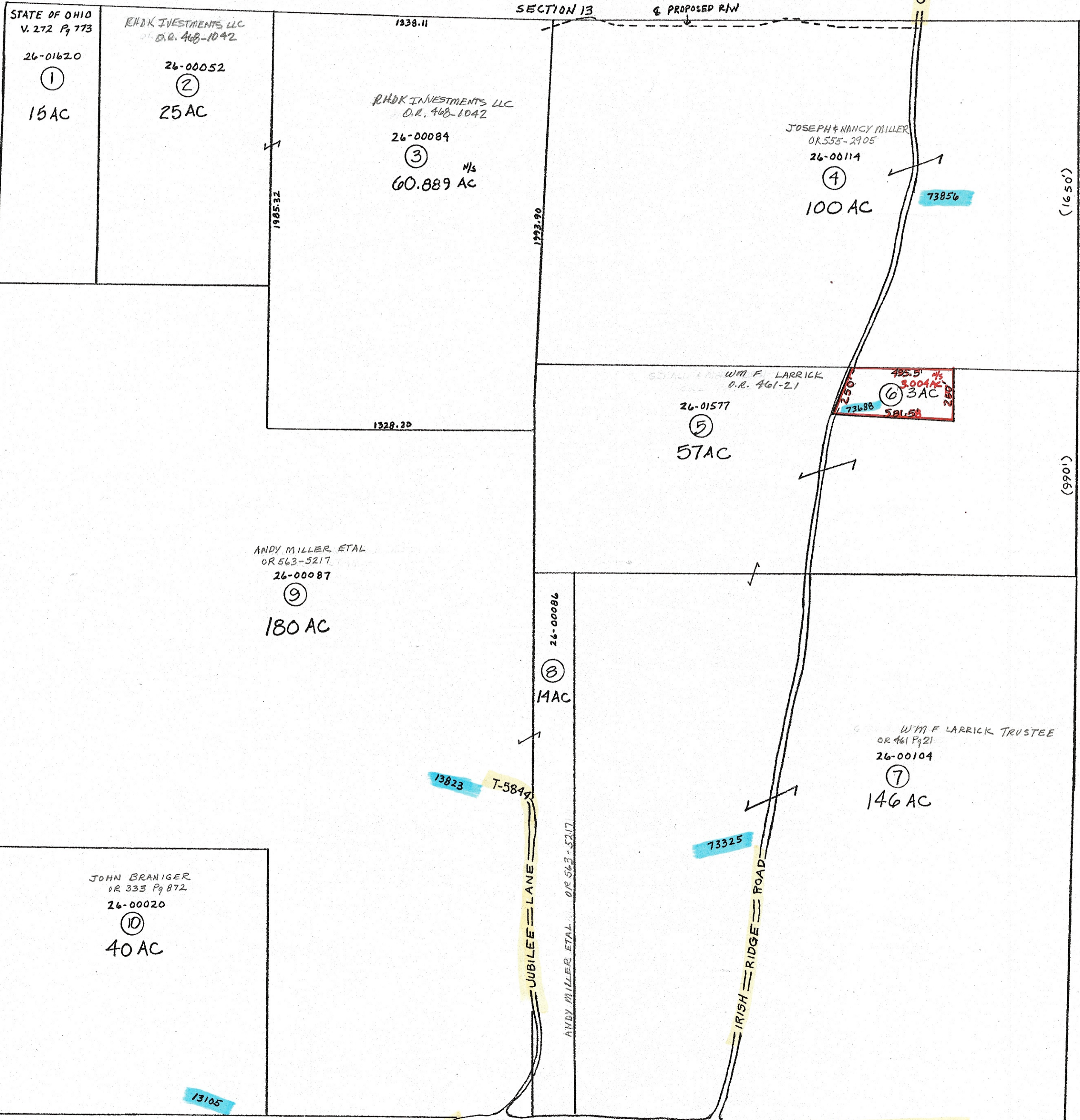


74000

SECTION 13 & PROPOSED R/W



PRELIMINARY
MAPS IN THIS OFFICE ARE
FOR TAX PURPOSES
ONLY-VERIFY INFO. BY DEED RECORDS

28

DELMAR E. GEORGE
County Engineer

HOWARD R. KING
cartographer
JRS '82
Drawn

MER 4-'07 Revised

Aerial Photo
2-G-123

TAX MAP
MONROE TOWNSHIP
GUERNSEY COUNTY OHIO

Range Twp
2 4 S18